

Full Moon of Aquarius, twelfth Full Moon of this Astrological Year, on Wednesday, February 12, 2025, at 15:53:22 in Romania:

The main Keynote or phrase to consider for all Aquarius Full Moons (each year): **“Water of life am I, poured forth for thirsty men (Souls).”** The Aquarius Full Moon Keynote of Light each year is: **“The Light that shines on Earth, across the sea. (Hint: This is the light which ever shines within the dark and cleansing with its healing rays that which must be purified until the dark has gone.)”** Consider the Keynotes at, or as close to, the time of the Full Moon as possible and what it might mean as a Group. Each of the constellations also have at least one, but also as many as five, Ray determining energies by which they rule and of which they rule. **The main Ray energy of Aquarius is Ray 4.** So, Aquarius is considered to have a main energy of Harmony through Conflict or what is considered as Beauty. It is a recommendation to consider the Aquarius Keynotes as Ray 4 Keynotes. This is a direct correspondence to the information of our Color Consultations and the way this same Ray determining affects us individually and in our relationship to our group. So, our Color Consultation information can be reviewed and related to each of the Full Moon determining energies to determine the possible effects and opportunities each Full Moon offers each of us personally and in relationship with the group. This was explained and expanded upon from Esoteric Astrology (EA) in general in Addendum 1 from the past Aries Full Moon report (from April 2021 – please let us know if you would like that resent to you or it can be downloaded from the website at the bottom of the page at: www.sam2013.org/group_consciousness.html).

We are adding an additional consideration each month to help in the understanding of the seven Rays called **'The Keys to the Seven Ray Methods'**. The Key to the Ray 4 Method is: **"Let the outer glory pass away and the beauty of the inner Light reveal the One. Let dissonance give place to harmony, and from the center of the hidden Light let the soul speak, let the word roll forth: 'Beauty and glory veil Me not. I stand revealed. I Am.'"**

This year we are adding information on how each Ray effects the constellations as fundamental hypotheses as Addendum 1 below. Aquarius is the eleventh different sign of this new Astrological year (which started with Aries in March) and the eighth of the normal 9 (but this year 10) distribution and grounding energy and consciousness Full Moons of the year. It helps to continue the lower 'anchoring' cycle for the astrological year after the building and higher cycle of Aries, Taurus, and Gemini (March, April, May of this year). Addendum 3 from the last Aries Full Moon report (from April 2023) is some additional information on the full moons and possible meditation forms (please let us know if you need that resent to you or it can be downloaded from the website at the bottom of the page at: www.sam2013.org/group_consciousness.html).

Please continue to keep in mind, from the Gemini Full Moon Report (May 2024), Addendum 2 which was two papers titled, "Vision Paper: Unfolding Work for 2024-2026" by 2025 Initiative (www.2025initiative.org) and "More details about this proposed experiment and our groups' ideas about the unfolding opportunities of the period of 2024-2026". The addendums started with a note from us as an introduction about the papers and can also be found on the website at the bottom of the page at: www.sam2013.org/group_consciousness.html.

A. Notes on this coming Full Moon of February/Aquarius:

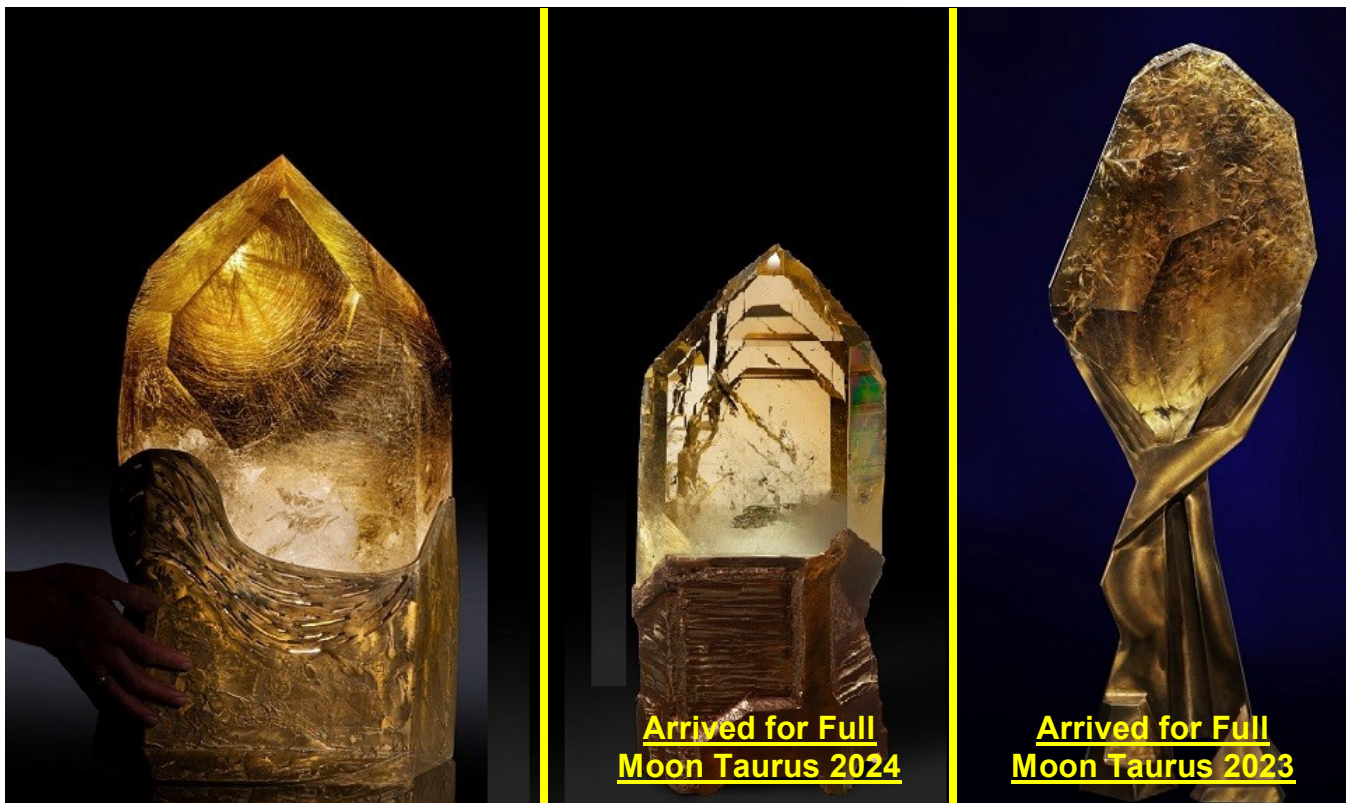
- 1. Watch for any impressions** that may come to you before the Full Moon that may relate to the Ray 4 Keynotes and your specific Rays (from your Color Consultations), especially two days before the Full Moon, the day of the Full Moon and two days after the Full Moon. **If you want to share** any of your impressions with us please do. If you want any impressions shared with the group let us know and we will include them in the next month's meditation notes.
- 2. This is the eleventh of twelve different Full Moons of this Astrological year (there will be thirteen Full Moons this year since there were two Full moons in the sign of Cancer this year in June and July)** and is the eighth of the nine different (or this year ten full moons for distribution) distribution of 'Consciousness and Energy' full moons of this astrological year. The energy which is built and gathered during these first three 'Building' Full Moons at the beginning of the astrological year, which is also called the 'higher interlude', will then be distributed over the last nine different Full Moons during the end of the astrological year, which is also called the 'lower interlude'.
- 3. Addendum 1 also from the Full Moon report of Aries (from April 2021) gives reference into more insight and inspiration for how to view some of the expanded awareness of these monthly**

and yearly Full Moon cycles as we enter into the sixth Astrological Year of this group formation and the group's beginning functioning.

4. **Addendum 1 below relates to** how each Ray effects the constellations as fundamental hypotheses.
5. **The 2024-5 astrological year Annual Keynote is,** "LET THE GROUP DEDICATE ITSELF ANEW TO THE SERVICE OF THE COMING ONE AND DO ALL IT CAN TO PREPARE HUMAN MINDS AND HEARTS FOR THAT EVENT. WE HAVE NO OTHER LIFE INTENTION."

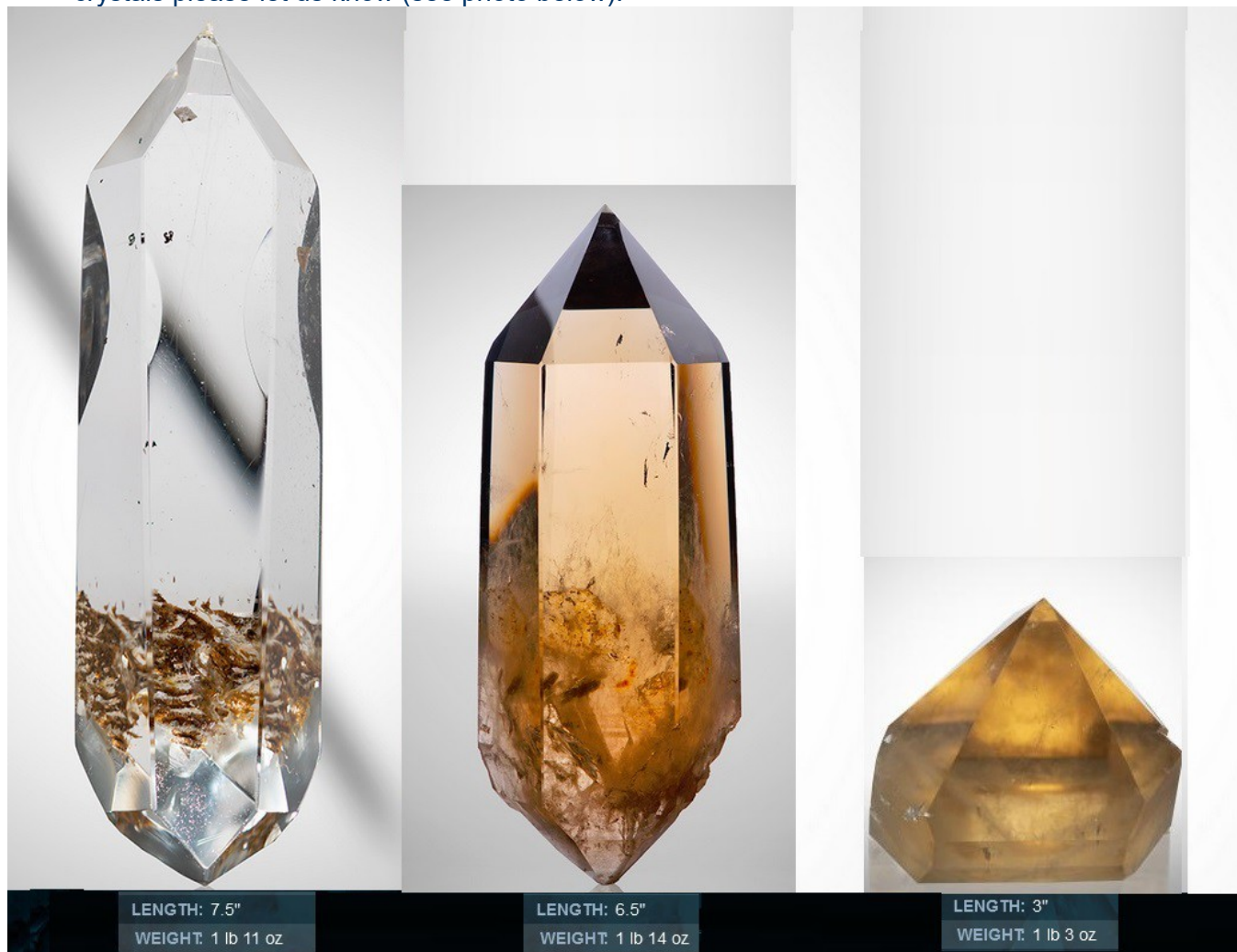
B. Notes and Activities on or since the last Full Moon January/Capricorn:

1. **SuonAngelMiriam meditated at the time of the full moon and new moon together with Safi (when she wanted). We had what we consider** very good meditations for the continuing of the grounding of consciousness cycle of the astrological year. On the new moon of Aquarius Suon had a strong experience and conscious awareness relating to the difference between the sacrificial 'savior' type qualities of Pisces and the sacrificial 'server' type qualities of Aquarius. We are still having more experiences during the toning, chanting and vocalizing parts of the meditations and with the group esoteric crystals and now some of the new hand held crystals this year.
2. **The Three Group Central Pillar Crystals** and the Esoteric (based on numerologist 8) and Occult (based on numerical 9) crystal sub-sets have been finalized along with any rearranging of the other crystals of the over-all set for the 2025 impulse. Please let us know if you would like to explore any of these crystals or have any other input (see photo in previous FM report of Gemini of June 2022). **The three natural triple pointed crystal clusters** are always available for any group members who would like to meditate with them as another way to tune into group consciousness (see previous photo from March 2022 Pisces report). **Of three new 'Circumcentral' crystals one is still on a Lay-Away plan** to be here by the Summer Solstice of 2025 for the Hierarchical Group Impulse year of 2025. The first of the three has arrived before the past Full Moon of Taurus 2023 and the second has arrived for this full moon of Taurus 2024 (see photo below or <http://www.sam2013.org/crystals.html> on our website for more information).



3. Two hand held faceted crystals have arrived for this Full Moon. A. One, which is a combination of a Phase I and Phase II crystal which has 'Blue Needles' which have an esoteric quality to transcend time and is a more personal healing crystal for Suon for present, past and future health issues (see photo in previous report), and B. One, which has a triangular bottom and also is a combination of a Phase I and Phase II crystal and which is available to anyone who wants to consider having such a crystal (see photo in previous reports).

4. **Three new hand held crystals have been ordered to assist with the 2025** impulse year consciousness and energies and are scheduled to arrive with the third circumcentral crystal by the Taurus Full Moon in May if all goes well. If anyone is interested in knowing more about these crystals please let us know (see photo below).



5. **Poppy research at BioFarmland (BFL)** at Virginia's suggestion. Seeds from last year's wild Poppy harvest were collected and planted in last June 2023 for growing during the 2024 season. A small number of the poppies have come out this year (May 2024) and their seeds have been encouraged to spread more next year in 2025.
6. **Revised and renewed Hemp Museum suggestion** presented to Zoli, Virginia, and Leontina as a possible group project. There was similar input about local, village or household museums from the "Socio-Economico-Cultural Rebirth of the Romanian Village" conference in previous reports. Latest brief meeting was in Timisoara this spring to talk more informally about these topics.
7. **Based on Leontina's previous intentions to establish an educational location near her home further discussions are going on about** a location, financing, possible links to other hemp projects and people. An initial estimate to get a small workshop space built on her land, for materials with mainly voluntary labor or construction, is 3,000 Euros. Due to challenges encountered with the political system at her home location, Leontina has decided to stop for the moment Sopronul Cultural and the building of the dome until the environment becomes more friendly to her projects. See previous update concerning Pamantul Stramosesc in the FM 2023 Sagittarius Report from November 2023.
8. **SuonAngelMiriam are continuing our interaction with Katharina documenting** how to manage and implement new and better ways of herb growing, drying, processing, soil regeneration, distilling, etc.
9. **SuonAngelMiriam are interacting with Virginia on her Bio-Resonance and Herbal and Aromatherapy courses, consultations** and treatments along with the consideration of the SAM2013 Synthesis Tri-Level Color Set as liquids. Updated at meetings in September and October 2022, continuing with Virginia's Certified Herbal and Aroma Therapy courses #1 and now #2 which

was in March 2023 and had another meeting at EsotericFest in June 2023 (also see Item #2 below in previous activities archive). The most recent meeting was held at EsotericFest in November 2023 with plans for the next meeting in Spring 2024 once work is completed on Color and Crystal Course educational manuals. The manuals have been completed in February 2024 and two meetings were held in March to go over more input and refinements of the process prior to a May meeting at EsotericFest in Timisoara. In meetings since the May EsotericFest The Color Course has been approved for accrediting by ANATECOR and plans are proceeding to get further details and SAM2013 products ready for the course materials. We have also been receiving treatments and products for some health concerns of Suon. December 2024: The first production of Virginia's Favisan samples of the SAM2013 Synthesis Tri-Level Color System have been made and are being tested for many characteristics. **The set tested well enough to use for color consultations.**

10. **SuonAngelMiriam are working with Remus and others on updating and expanding** one of his personal spirituality courses on Self Esteem as an Esoteric Group project. Anyone interested in knowing more or helping in this group project please let us know. Latest update was in October 2023.
11. **We participated in Remus' course about Stress Management** held through ANATECOR which is related to Virginia's fitotherapy course. We also attended the prayer zoom meeting he and Anatecor organized for the professor Mircea Stefea who passed recently.
12. **SuonAngelMiriam are working with Aurellian on how some of the concepts of his book and course** on "The Numerology of the Soul" might relate and correspond to the SAM2013 Synthesis Tri-Level Color System numerology. Both Aurellian and Suon have had direct contact with Yogi Bahjan who taught the numerology of the soul concepts.
13. **SuonAngelMiriam are working with Mircea on ways of distributing SAMfume** and other products and working more closely together on the other projects listed above. Recent meetings held in September Singfest and at the Singureni Christmas Fair 2022 and then in June 2023 also. The last meeting in Bucharest in March, 2024 for a brief update.

C. Previous Activities Archive:

1. **Hemp for cooperative research at BioFarmland (BFL) on hold after 3 years of testing.**
2. **2023 Timisoara Cultural Capital office cooperative event named 'SAMatate'.** See FM Sagittarius 2023 for final update on this report.
3. **SuonAngelMiriam have met personally with Georghe Piperea and joined his class** action law suit against the constitutionality of mandates. Suit was lost, see previous report details.

D. General Notes and considerations about the group, cycles, meditation and information flow:

1. **We are happy to get to know each other better**, or other ways that we may cooperate either personally, or as organizations. Please let us know if you would like any other meetings or if you have any other comments or questions.
2. **2024 continues the new seven year cycle started in 2020.** The final major group 'impact' has been made in 2019 prior to the next 100 year 'impulse' which happens during 2025.
3. **It might be considered that these Group Meditations seek** to make use of the spiritual opportunities that the cycles of full moons, solstices and equinoxes, Group Festival Weeks and Centennial Impulse years provide. The unique energies associated with each constellation, season and longer cycles are directed into the consciousness as trans-formative qualities that can lift and expand our hearts and minds.
4. **It might be considered that Group Living tends to the fulfillment of free will in service** and, as this is gradually understood, coming together to co-operate on issues for the benefit of the whole without intentions to dominate, interfere or impose on others. The vision is there, the future is assured, but the key to its successful implementation is that co-operation has to be based on intentions that are based on the good of the whole rather than a focus on self-interest.
5. **In all meditation it is of value for the student to remember that**, from the standpoint of permanent benefit, it is easier to meditate effectively during the period from the new moon to the full moon, than from the full moon to the new moon. The first half of the lunar cycle is one of intensification, absorption and accretion; the second half is one of assimilation and distribution. More real progress over a long period can be made by observing this cyclic law.
6. **Wisely utilizing newly acquired energies keeps in flowing and out flowing channels open** and prevents Sycal (psychical), Astral (emotional), Mental (intellectual) congestions, which may otherwise be experienced, with their accompanying physical consequences.
7. **The following regular monthly cycle is for the group information flow:**
 - a. Full Moon (five days): Two days before, the day of (meditation), and two days after Full Moon for getting impressions.
 - b. The week after the 5 days of the Full Moon: For letting us know or sharing of any impressions during the preceding 5 days. Plus us transcribing our own impressions.
 - c. Second week after Full Moon for 'Anchoring' or 'Grounding' impressions through gathering other information or following up on activities based on the impressions. Possible New Moon meditation by those who want and ending that Full Moon Cycle.

- d. Third week after Full Moon (just after the New Moon): Starting to build up to the next Full Moon having any questions to impressions shared and answered and any activities based on impressions started or completed.
- e. Fourth week after the Full Moon (just before the next Full Moon): Coming out with the Keynote and information and timing of the next Full Moon, including the shared impressions or activity from the last Full Moon.

Addendum 1:

Ray effects on the constellations as fundamental hypotheses from EA

(Free online at https://www.lucistrust.org/online_books/esoteric_astrology_obooks):

The Zodiac and the Rays (Continued from the last Full Moon report of Capricorn):

... It is always confusing to the beginner who has not yet a developed and trained intuition to reconcile the seeming discrepancies and apparent contradictions which appear in the teaching of the Ageless Wisdom. This same difficulty will be met with in the science of astrology and some reference to the matter is in order at this point. I would remind you of the occult truism which states that interpretation and right understanding are based upon the stage of the development of the individual. H.P.B. remarked in *The Secret Doctrine* that for some people the highest principle of which they can be consciously aware might be a very low one for another person. The constellations and the planets which govern them may, and do, have one effect upon the mass and another upon the average individual man, and still a third effect upon the disciple or the initiate. As the various energies and forces circulate throughout the etheric body of our solar system, their reception and effect will depend upon the state of the planetary centers and upon the point of unfoldment of the centers in individual man. That is why the various charts and tabulations can differ so widely and different planets can appear as ruling the constellations. There seems to be no fixed rule and the student gets bewildered. Orthodox astrology posits one set of planetary rulers, and they are correct as far as the mass of humanity is concerned. But the disciple, who lives above the diaphragm, responds to another combination and it is with these that I shall principally deal. That is why the three charts here given do not appear to coincide. They are drawn up to express the situation in regard to three groups:

1. The mass of people who conform to orthodox and recognized astrological conclusions.
2. Disciples and advanced individuals, conforming to the conclusions of esoteric astrology.
3. The Creative Hierarchies, giving the interim situation in this world cycle.

TABULATION IV. THE ORTHODOX ASTROLOGICAL RELATIONSHIP

CONSTELLATIONS AND PLANETARY RULERS IN CONNECTION WITH ORDINARY MAN

Constellation	Ruler	Ray	Related to	
1. Aries	<i>Mars</i>	6th ray	Scorpio.	Same ruler.
2. Taurus	Venus	5th ray	Libra	" "
3. Gemini	Mercury	4th ray	Virgo	" "
4. Cancer	<i>Moon</i>	4th ray	none.	
5. Leo	<i>The Sun</i>	2nd ray	none.	
6. Virgo	Mercury	4th ray	Gemini	" "
7. Libra	Venus	5th ray	Taurus	" "
8. Scorpio	<i>Mars</i>	6th ray	Aries	" "
9. Sagittarius	Jupiter	2nd ray	Pisces	" "
10. Capricorn	Saturn	3rd ray	none.	
11. Aquarius	Uranus	7th ray	none.	
12. Pisces	Jupiter	2nd ray	Sagittarius	" "

- a. The non-sacred planets are italicized.
- b. All the rays are represented except the first. This is interesting, as the mass of the people move within their horoscopes and the will aspect is latent but unexpressed.

TABULATION V. THE UNORTHODOX ASTROLOGICAL RELATIONSHIP

CONSTELLATIONS AND PLANETARY RULERS IN CONNECTION WITH DISCIPLES AND INITIATES

NOTE: In charts connected with the PATH, progress is from Aries to Pisces through Taurus, etc.

Constellation	Ruler	Ray	Related to		
1. Aries	Mercury	4th ray	Virgo	Same ray.	
2. Taurus	Vulcan	1st ray	Pisces	"	"
3. Gemini	Venus	5th ray	none.		
4. Cancer	Neptune	6th ray	Scorpio	"	"
5. Leo	The Sun	2nd ray	Aquarius	"	"
6. Virgo	The Moon	4th ray	Aries	"	"
7. Libra	Uranus	7th ray	none.		
8. Scorpio	Mars	6th ray	Cancer	"	"
9. Sagittarius	The Earth	3rd ray	Capricorn	"	"
10. Capricorn	Saturn	3rd ray	Sagittarius	"	"
11. Aquarius	Jupiter	2nd ray	Leo	"	"
12. Pisces	Pluto	1st ray	Taurus	"	"

NOTE: In connection with disciples and the zodiacal signs, Gemini and Libra are two constellations which—through their rulers—express 5th and 7th ray energy. For some occult reason, they remain unrelated to any other of the signs.

The relation between the other constellations through the planets, as expressing the rays, is as follows:

1. Taurus and Pisces, through Vulcan and Pluto, are related to Ray 1. Transmutation of desire into sacrifice and of the individual will into the divine will.

The World Saviour

2. Leo and Aquarius, through the Sun and Jupiter, are related to Ray 2. Development of the individual consciousness into world consciousness. Thus a man becomes a world server.

The World Server

3. Sagittarius and Capricorn, through the Earth and Saturn, are related to Ray 3. The one-pointed disciple becomes the initiate.

The Initiate

4. Aries and Virgo, through Mercury and the Moon, are related to Ray 4. Harmonising the cosmos and the individual through conflict, producing unity and beauty. The birth pangs of the second birth.

The Cosmic and Individual Christ

5. Cancer and Scorpio, through Neptune and Mars, are related to Ray 6. Transformation of the mass consciousness into the inclusive consciousness of the disciple.

The Triumphant Disciple

I would call attention to the fact that in Tabulation IV, the relationship is between the planets which rule, and in Tabulation V the emphasis is laid upon the conditioning ray...

To Be Continued and Concluded in the next Full Moon report of Pisces.

To be considered below as closing for this Full Moon Addendum of Aquarius.

...Again and repeatedly, students must remind themselves that we are considering the impact of energy upon energy units (all qualified and producing appearance) and with the response of those energy units to the streams of force which reach them from "the furthest center." It is in the development of response to

distant points of contact and emanating sources of energy that the needed sensitivity is produced. Sensitivity, generally speaking, is of a threefold nature:

1. Sensitivity to that which is found within oneself. This, when the consciousness is adequately self-sufficient, opens a door for the entrance of energies coming from the "middle center." I speak in symbols and for those whose knowledge of cosmic location and of points in time and space will enable them to comprehend; to the uninitiate, I simply say, "Respond to soul impact."
2. Sensitivity to that which emanates from the "centers left behind" or to those streams of vital energy which lie active and focused below the threshold of the waking consciousness. They stir the threads of memory; they draw backward the glances (and there lies magic in the energy of the eye) of the onward moving Point, the Pilgrim on his way; they condition through ancient habit the responsiveness of the units in the form.
3. A developed sensitivity which emerges from the "furthest center" at first unconsciously employed and later consciously directed and attuned - a fully magnetic and attractive sensitivity. Forget not that true interplay imposes the condition of reciprocity and that the two points or termini of a line eventually vibrate in unison.

The Rays pour through, are expressed by and are transmitted through the following constellations:

Ray I	Aries	Leo	Capricorn
Ray II	Gemini	Virgo	Pisces
Ray III	Cancer	Libra	Capricorn
Ray IV	Taurus	Scorpio	Sagittarius
Ray V	Leo	Sagittarius	Aquarius
Ray VI	Virgo	Sagittarius	Pisces
Ray VII	Aries	Cancer	Capricorn

Conclusion (at this point):

May we consider together entering into that higher state of (group/soul) 'bewilderment', especially at this cycle of Aquarian consciousness, yet strength and unity from our lower state of personal certitude and isolation to possibly obtain a universal group consciousness.