

## Full Moon of Cancer, forth Full Moon of this Astrological Year, on Monday, July 3, 2023 at 14:38:29 in Romania:

The main Keynote or phrase to consider for all Cancer Full Moons (each year): **“I build a lighted house and therein dwell.”** The Cancer Full Moon Keynote of Light each year is: **“The Light within the form. Hint 1: This is the diffused light of substance itself, the "dark light" of matter, referred to in The Secret Doctrine. Hint 2: It is the light awaiting the stimulation coming from the soul light.)”**

Consider the Keynotes at, or as close to, the time of the Full Moon as possible and what it might mean as a Group. Each of the constellations also have at least one, but also as many as five, Ray determining energies by which they rule and of which they rule. **The main Ray energy of Cancer is Ray 6.** So, Cancer has a main energy of Devotion and Idealism. It is a recommendation to consider the Cancer Keynotes as Ray 6 Keynotes. This is a direct correspondence to the information of our Color Consultations and the way this same Ray determining affects us individually and in our relationship to our group. So, our Color Consultation information can be reviewed and related to each of the Full Moon determining energies to determine the possible effects and opportunities each Full Moon offers each of us personally and in relationship with the group. This was explained and expanded upon from Esoteric Astrology (EA) in general in Addendum 1 from the past Aries Full Moon report (from April 2021). This year we are adding information on how each constellation works as a Triangle in what are called the Astrological or Galactic Triangles. Addendum 1 from the last Aries Full Moon report (from April 2023) is a general introduction about the triangles formed with the 12 Astrological signs and other more distant stars and galactic constellations, taken from EA. Addendum 1, below, relates specifically to Cancer and how it fits into the galactic triangles. Cancer is the forth sign of the Astrological year and the first of the nine distributing or ‘grounding’ energy and consciousness Full Moons of the year. It starts and helps to distribute or ‘ground’ the higher building cycle consciousness from the first three months of the astrological year of Aries, Taurus, and Gemini (April, May, and June). Addendum 3 from the last Aries Full Moon report (from April 2023) is some additional information on the full moons and possible meditation forms.

### A. Notes on this coming Full Moon of July/Cancer:

1. **Watch for any impressions** that may come to you before the Full Moon that may relate to the Ray 6 Keynotes and your specific Rays (from your Color Consultations), especially two days before the Full Moon, the day of the Full Moon and two days after the Full Moon. **If you want to share** any of your impressions with us please do. If you want any impressions shared with the group let us know and we will include them in the next month's meditation notes.
2. **This is the forth of twelve Full Moons of this Astrological year** and is the first of the nine different ‘Distributing Consciousness and Energy’ full moons of this astrological year. The energy which was built and gathered during these first three ‘Building’ Full Moons at the beginning of the astrological year (of April, May June), which is also called the ‘higher interlude’, will now be distributed over the last nine Full Moons during the end of the astrological year, which is also called the ‘lower interlude’.
3. **Addendum 1 from the Full Moon report of Aries (from April 2021) gives reference into more insight and inspiration for how to** view some of the expanded awareness of these monthly and yearly Full Moon cycles as we enter into the fifth Astrological Year of this group formation and the group's beginning functioning.
4. **Addendum 1 below** relates specifically to Cancer and how it fits into the galactic triangles. taken from EA.
5. **The new 2023-4 astrological year Annual Keynote is,** “LET THE GROUP AFFIRM THE WILL AS AN EXPRESSION OF THE LAW OF SACRIFICE.”

### B. Notes and Activities on or since the last Full Moon June/Gemini:

1. **SuonAngelMiriam meditated at the time of the new and full moon, did our annual Puja ceremony of cleansing and nurishing and also did a Summer Solstice meditation together with Safi (when she wanted). We had what we consider** very good meditations of positive building of this astrological year's continuing of the Higher Interlude and nature's annual highest impulse on the Solstice. Since the first and highest of the the Golden Light Presence crystals, ‘MilkyWay’ has arrived we are also tuning in to our respective Nirvana IV occult group of crystals during our meditations and sensing an increase of energy due to these crystals also.
2. **SuonAngel are talking with 2023 Timisoara Cultural Capital office about a cooperative event possibly named ‘SAMatate’** between Favisan, BFL/SolarCity (The Natural Way Assoc. - TNWA),

the Hemp Museum, SAM2013 and possibly Anatacor and Aurellian's or other groups for the Cultural Capital celebrations rescheduled to 2023.

TM2023 has launched another call for projects but limited to arts only: music, film, paintings and photography with the title Over Border Culture. Due date 29.06.2023. The theme is very restrictive, it has to be something that brings the culture of at least 2 countries together so we are not planning to submit any project for this. See the previous meditation report for April for past historical information about this event.

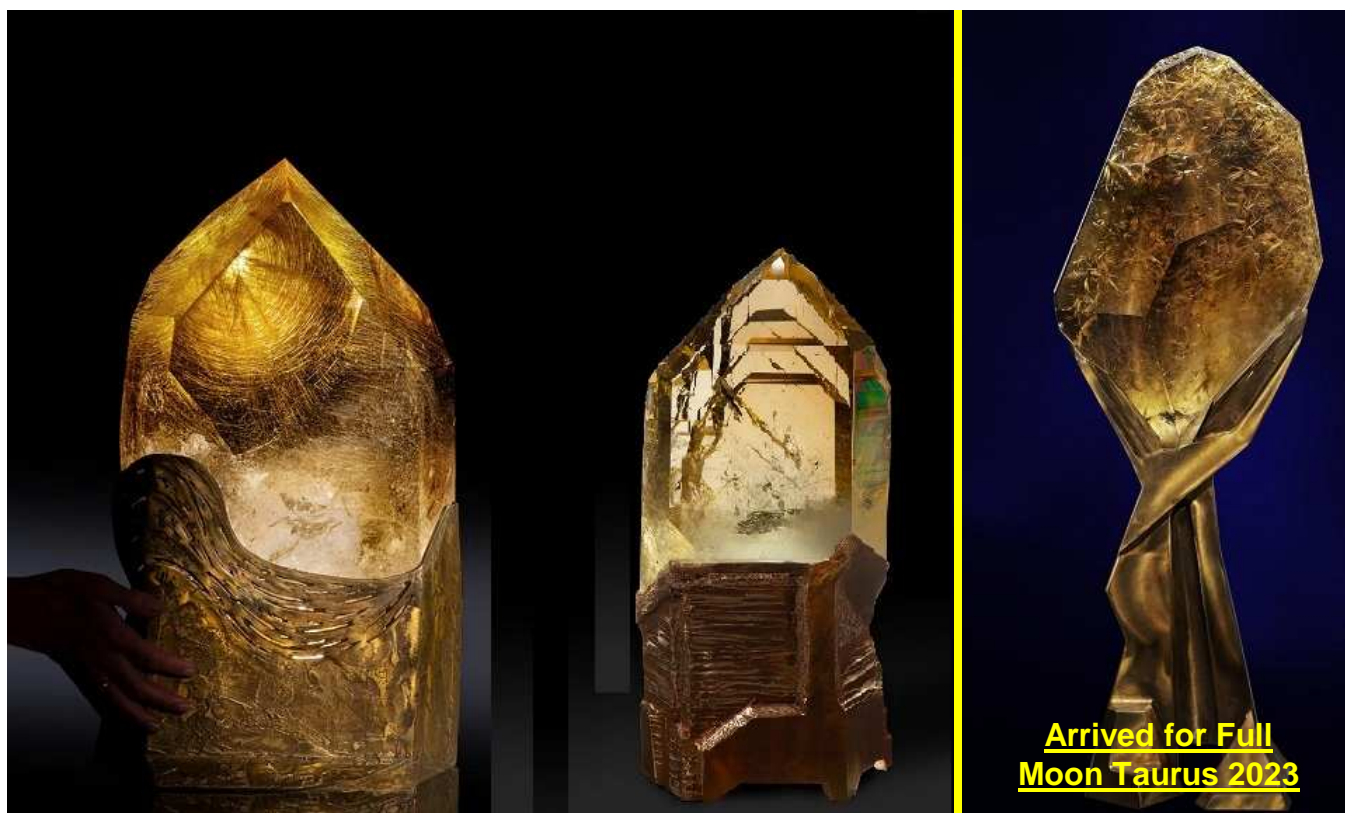
3. **The Group Central Pillar Crystals** and the Esoteric and Occult crystal sets are now finalized along with any rearranging of the other crystals of the set for the 2025 impulse. Please let us know if you would like to explore any of these crystals or have any other input (see photo in previous FM report of Gemini of June 2022). **The three natural triple pointed crystal clusters** are always available for any group members who would like to meditate with them as another way to tune into group consciousness (see previous photo from March 2022 Pisces report). **Of three new 'Circumcentral' crystals two are still on a Lay-Away plan** to be here by the Summer Solstice of 2025 for the Hierarchical Group Impulse year of 2025 and the first has arrived before the recent past Full Moon of Taurus (see photo below).
4. **Poppy research at BioFarmland** (BFL) at Virginia's suggestion. New organic seeds have arrived and were planted in October 2022 for the 2023 spring season. Some seeds appeared to be sprouting in April but did not grow now into May so far.
5. **Revised and renewed Hemp Museum suggestion** presented to Zoli, Virginia, and Leontina as a possible group project. There was similar input about local, village or household museums from the "Socio-Economico-Cultural Rebirth of the Romanian Village" conference in Item 2 above.
6. **Based on Leontina's previous intentions to establish an educational location near her home further discussions are going on about** a location, financing, possible links to other hemp projects and people. An initial estimate to get a small workshop space built on her land, for materials with mainly voluntary labor or construction, is 3,000 Euros.

Leontina has created the Sopronul Cultural ( The Cultural Shack) which is a roof on the spot where people camped last time and where she is holding events together with Pamantul Stramosesc. She has organized there markets, courses for children, seeds exchanges, concerts, etc. The idea of the cultural space for the moment has moved there and she is focused on Pamantul Stramosesc where she is a founder member together with Calin Georgescu. There was an event now with the occasion of 1<sup>st</sup> of May, held at the Sopronul Cultural together with Pamantul Stramosesc which consisted of a Plasma and Plasmatic water making and another of hemp soap making.

Following the event all present together with Leontina discussed about the possibility of building a geodesic dome structure, 9 meters in diameter and 4.5 meters high, as a protected space for the Sopronul Cultural workshops, courses etc. For the moment the period agreed upon for the beginning of the structure is the end of July, exact dates following to be settled together with Pamantul Stramosesc. Anyone who is interested in helping the building of this structure please contact us or Leontina directly.

Leontina has organized a Sanziene picking day and weekend for June 24 as the most current events.

7. **SuonAngelMiriam have met personally with Georghe Piperea** and joined his class action law suit against the constitutionality of mandates which is moving forward as discussed in the Full Moon cover letter for Capricorn (2021). September 2022 hearing produced a change in how and who the law suit will be claiming as the defendants and is continuing. Recent meetings at Singfest in September and December 2022. Let us know if you have additional comments or questions. Next meetings are scheduled for June 30 to July 2, 2023 at Singfest 2023.



8. **SuonAngelMiriam are continuing our interaction with Katharina documenting** how to manage and implement new and better ways of herb growing, drying, processing, soil regeneration, etc.
9. **SuonAngelMiriam are interacting with Virginia on her Bio-Resonance and Herbal and Aromatherapy courses, consultations** and treatments along with the consideration of the SAM2013 Synthesise Tri-Level Color Set as liquids. Updated at meetings in September and October 2022, continuing with Virginia's Certified Herbal and Aroma Therapy courses #1 and now #2 which was in March 2023 and had another meeting at EsotericFest in June 2023 (also see Item #2 above). The next meetings are planned for this summer and Autumn.
10. **SuonAngelMiriam are working with Remus and others on updating and expanding** one of his personal spirituality courses on Self Esteem as an Esoteric Group project. Anyone interested in knowing more or helping in this group project please let us know. Latest update was at EsotericFest in June 23 with another meeting being planned for this autumn.
11. **We participated in Remus' course about Stress Management** held through anatecor which is related to Virginia's fitotherapy course. We also attended the prayer zoom meeting he and Anatecor organized for the professor Mircea Stefea who passed recently.
12. **SuonAngelMiriam are working with Aurellian on how some of the concepts of his book and course** on "The Numerology of the Soul" might relate and correspond to the SAM2013 Synthesis Tri-Level Color System numerology. Both Aurellian and Suon have had direct contact with Yogi Bahjan who taught the numerology of the soul concepts.
13. **SuonAngelMiriam are working with Mircea on ways of distributing SAMfume** and other products and working more closely together on the other projects listed above. Recent meetings held in September Singfest and at the Singureni Christmas Fair 2022 and then in June 2023 also.

**C. Previous Activities Archive:**

1. **Hemp** for cooperative research at BioFarmland (BFL) on hold after 3 years of testing.

**D. General Notes and considerations about the group, cycles, meditation and information flow:**

1. **We are happy to get to know each other better**, or other ways that we may cooperate either personally, or as organizations. Please let us know if you would like any other meetings or if you have any other comments or questions.
2. **2023 continues the new seven year cycle started in 2020.** The final major group 'impact' has been made in 2019 prior to the next 100 year 'impulse' which happens during 2025.
3. **It might be considered that these Group Meditations seek** to make use of the spiritual opportunities that the cycles of full moons, solstices and equinoxes, Group Festival Weeks and Centennial Impulse years provide. The unique energies associated with each constellation, season and longer cycles are directed into the consciousness as trans-formative qualities that can lift and expand our hearts and minds.
4. **It might be considered that Group Living tends to the fulfillment of free will in service** and, as this is gradually understood, coming together to co-operate on issues for the benefit of the whole without intentions to dominate, interfere or impose on others. The vision is there, the future is assured, but the key to its successful implementation is that co-operation has to be based on intentions that are based on the good of the whole rather than a focus on self-interest.
5. **In all meditation it is of value for the student to remember that**, from the standpoint of permanent benefit, it is easier to meditate effectively during the period from the new moon to the full moon, than from the full moon to the new moon. The first half of the lunar cycle is one of intensification, absorption and accretion; the second half is one of assimilation and distribution. More real progress over a long period can be made by observing this cyclic law.
6. **Wisely utilizing newly acquired energies keeps inflowing and out flowing channels open** and prevents Sycal (psychical), Astral (emotional), Mental (intellectual) congestions, which may otherwise be experienced, with their accompanying physical consequences.
7. **The following regular monthly cycle is for the group information flow:**
  - a. Full Moon (five days): Two days before, the day of (meditation), and two days after Full Moon for getting impressions.
  - b. The week after the 5 days of the Full Moon: For letting us know or sharing of any impressions during the preceding 5 days. Plus us transcribing our own impressions.
  - c. Second week after Full Moon for 'Anchoring' or 'Grounding' impressions through gathering other information or following up on activities based on the impressions. Possible New Moon meditation by those who want and ending that Full Moon Cycle.
  - d. Third week after Full Moon (just after the New Moon): Starting to build up to the next Full Moon having any questions to impressions shared and answered and any activities based on impressions started or completed.
  - e. Fourth week after the Full Moon (just before the next Full Moon): Coming out with the Keynote and information and timing of the next Full Moon, including the shared impressions or activity from the last Full Moon.

### **Addendum 1: Cancer, The Crab, constellation hypothesizes and considerations on the Galactic Triangles from EA:**

#### **CANCER, THE CRAB:**

This study will fall into three parts as I earlier indicated:

1. Triangles of Energy—constellations.
2. Triangles of Force—planetary triplicities.
3. The Triangles and the Centres—planetary and human.

#### **First Triangle:**

The Pleiades . . . **Cancer** . . . Venus.  
Humanity.

#### **Second Triangle:**

The Great Bear . . . Aries . . . Pluto.  
Shamballa.

#### **Third Triangle:**

Sirius . . . Leo . . . Jupiter.  
Hierarchy.

## TABULATION IX. — A COSMIC SERIES OF INTERRELATED TRIANGLES

(The Rays, Constellations and Planets)

Ray (only Rays III and VII shown because they have Cancer in the triangles)	Constellations	Planets	
		Orthodox	Esoteric
III. Active Intelligence	<b>Cancer</b>	The Moon	Neptune
	Libra	Venus	Uranus
	Capricorn	Saturn	Saturn
VII. Ceremonial Order	Aries	Mars	Mercury
	<b>Cancer</b>	The Moon	Neptune
	Capricorn	Saturn	Saturn

... Five signs related to the unfoldment, in time and space, of the Human Hierarchy. These five signs are of major conditioning importance and may be enumerated as follows:

- a. **Cancer**
- b. Leo
- c. Scorpio
- d. Capricorn
- e. Pisces

These five signs are related in the planetary sense to the five great races of which our present race, the Aryan, is the fifth. These five races, under the influence of the five signs, produce the externalisations which are called the five continents—Europe, Africa, Asia, Australia, America. These five continents are to the planetary Life what five major endocrine glands are to the human being. They are related to five centres.

All these appearances, expressions of qualities and material evidences of life are the symbols or outer and visible signs of inner and spiritual realities or of Life, whatever you may mean by that term...

...Forget not that the personality rays change from period to period in connection with countries and cities just as they do with individuals:

### RAYS:

<u>City</u>	<u>Soul Ray</u>	<u>Personality Ray</u>	<u>Sign</u>
1. London	5th	7th	Gemini.
2. New York	2nd	3rd	Cancer.
3. Tokyo	6th	4th	Cancer.
4. Geneva	1st	2nd	Leo.
5. Darjeeling	2nd	5th	Scorpio.

We might consequently state that the forces of:

1. Cancer—Capricorn—Saturn (which are an expression of Sirian energy) enable the aspirant to tread the Path of Purification, of Probation. These energies focus and qualify the energy of the Great Lodge of the Most High in that distant Sun. They pour through the Hierarchy upon the mass of men and enable the unit in that mass to "isolate himself and turn his back upon the past and find his way on to that section of the Path wherein he learns to feel."

2. Gemini—Sagittarius—Mercury (which are an expression of the Pleiades) enable the Probationary Disciple to pass on to the Path of Accepted Discipleship. He is then becoming increasingly intuitive and entirely one-pointed whilst the nature of the pairs of opposites is clearer to him. The relation of the Mother-aspect (as embodied in the Pleiades) and of the Christ-child, hidden within the form of the personality, is realised and the inner, spiritual man institutes the process of initial identification with the spiritual entity on its own plane; the little self begins to react consciously and with increasing frequency to the higher Self. The man "presses forward on that Path wherein he learns to see."

3. Aries—Libra—The Sun (which are an expression of the Great Bear) bring about that focussing of energy in the life of the disciple which makes it possible for him to function consciously and with intention upon the Path of Initiation. He enters the realm of the formless worlds because Aries, the sign of beginnings makes this possible; through the potency of Libra, he has succeeded in achieving that point of balance which makes the final escape from the pairs of opposites possible. He now knows, through transcended feeling and from identification with the seen Vision, the true meaning of being.

This threefold process can also be covered by the three words: Sensitivity, Illumination and Inspiration.

...Ray III.- Cancer: The mass movement towards liberty, release and light, so dominant today, is caused by the energy of this sign...

... There are other major triangles which are called "triangles in consciousness" and, as you well know, the most important of these for mankind is the triangle of Cancer, Leo and Aquarius. They are important at this time because the influences pouring through these three are basically responsible for the growth of the human understanding and the unfoldment not only of man's response apparatus, the form nature, but also of his expanding perception of that which is contacted. This threefold process under these three constellations produces finally the identification with that which is perceived to be the divine essence, underlying form. This identification with that which is the subjective and real Self and the consequent withdrawing from that which is the not-Self is the keynote of the fourth initiation.

From the mass awareness in Cancer, the man becomes an individual in Leo and the slow unintelligent sub-consciousness of the herd becomes the self-awareness of the developed man in Leo. Instinctual reaction gives place to conscious, intellectual activity. This dual activity in turn gives place to the group awareness which is the gift conferred by Aquarian activity; the super-conscious divine man then transcends his limited self-consciousness and the intuition supersedes the intellect...

#### **Conclusion (at this point):**

May we consider together entering into that higher state of (group/soul) 'bewilderment', especially at this cycle of Aquarian consciousness, yet strength and unity from our lower state of personal certitude and isolation to possibly obtain a universal group consciousness.