

**Full Moon of Capricorn, tenth Full Moon of this Astrological Year, on Wednesday, December 27, 2023 at 03:33:00 in Romania:**

The main Keynote or phrase to consider for all Capricorn Full Moons (each year): **“Lost am I in light supernal, yet on that light I turn my back.”** The Capricorn Full Moon Keynote of Light each year is: **“The Light of Initiation. (Hint: This is the light which clears the way to the mountain top, and produces transfiguration, thus revealing the rising sun.)”** Consider the Keynotes at, or as close to, the time of the Full Moon as possible and what it might mean as a Group. Each of the constellations also have at least one, but also as many as five, Ray determining energies by which they rule and of which they rule. **The main Ray energy of Capricorn is Ray 5.** So, Capricorn is considered to have a main energy of science, technology or what is considered as concrete knowledge. It is a recommendation to consider the Capricorn Keynotes as Ray 5 Keynotes. This is a direct correspondence to the information of our Color Consultations and the way this same Ray determining affects us individually and in our relationship to our group. So, our Color Consultation information can be reviewed and related to each of the Full Moon determining energies to determine the possible effects and opportunities each Full Moon offers each of us personally and in relationship with the group. This was explained and expanded upon from Esoteric Astrology (EA) in general in Addendum 1 from the past Aries Full Moon report (from April 2021). This year we are adding information on how each constellation works as a Triangle in what are called the Astrological or Galactic Triangles. Addendum 1 from the last Aries Full Moon report (from April 2023) is a general introduction about the triangles formed with the 12 Astrological signs and other more distant stars and galactic constellations, taken from EA. Addendum 1, below, relates specifically to Capricorn and how it fits into the galactic triangles. Capricorn is the tenth sign of the Astrological year and the seventh of the nine distributing or ‘grounding’ energy and consciousness Full Moons of the year. It continues and helps to distribute or ‘ground’ the higher building cycle consciousness from the first three months of the astrological year of Aries, Taurus, and Gemini (April, May, and June). Addendum 3 from the last Aries Full Moon report (from April 2023) is some additional information on the full moons and possible meditation forms.

**A. Notes on this coming Full Moon of December/Capricorn:**

- 1. Watch for any impressions** that may come to you before the Full Moon that may relate to the Ray 5 Keynotes and your specific Rays (from your Color Consultations), especially two days before the Full Moon, the day of the Full Moon and two days after the Full Moon. **If you want to share** any of your impressions with us please do. If you want any impressions shared with the group let us know and we will include them in the next month's meditation notes.
- 2. This is the tenth of twelve Full Moons of this Astrological year** and is the seventh of the nine different ‘Distributing Consciousness and Energy’ full moons of this astrological year. The energy which was built and gathered during the first three ‘Building’ Full Moons at the beginning of the astrological year (of April, May June), which is also called the ‘higher interlude’, will now be distributed over the next last nine Full Moons during the end of the astrological year, which is also called the ‘lower interlude’.
- 3. Addendum 1 from the Full Moon report of Aries (from April 2021) gives reference into more insight and inspiration for how to** view some of the expanded awareness of these monthly and yearly Full Moon cycles as we enter into the fifth Astrological Year of this group formation and the group's beginning functioning.
- 4. Addendum 1 below** relates specifically to Capricorn and how it fits into the galactic triangles taken from EA.
- 5. The 2023-4 astrological year Annual Keynote is,** “LET THE GROUP AFFIRM THE WILL AS AN EXPRESSION OF THE LAW OF SACRIFICE.”

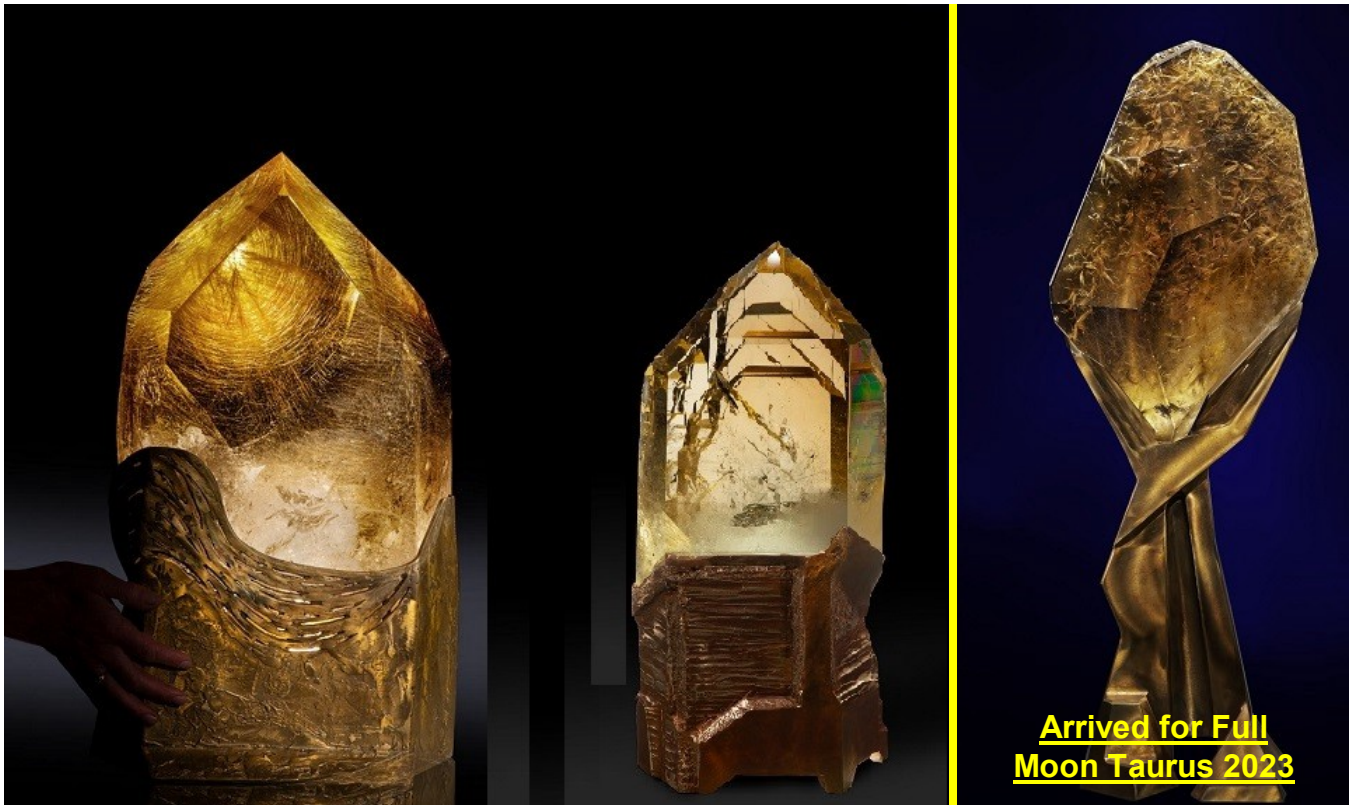
**B. Notes and Activities on or since the last Full Moon November/Sagittarius:**

- 1. SuonAngelMiriam meditated at the time of the new and full moon and also the Winter Solstice, together with Safi (when she wanted). We had what we consider** very good meditations of positive grounding of this astrological year's continuing of the Lower Interlude. Angel had significant impressions of working with the words ‘Firey’ and ‘Spectrometry’ and how they might relate to various aspects of life and how to write and educate about it.

Since the first and highest of the Golden Light Presence crystals, ‘MilkyWay’ has arrived we are also tuning in to our respective Nirvana IV<sub>1&2</sub> occult group of crystals during our meditations and sensing

an increase of energy due to these crystals and especially on the Winter Solstice (darkest and innermost time of the year and considered best time to search for and find the inner guiding star that will guide us to the new birth of our next annual phase of increases in awareness and understanding of Christ consciousness in order to have it be brought to life in our own lives.

- 2. The Group Central Pillar Crystals** and the Esoteric and Occult crystal sets are now finalized along with any rearranging of the other crystals of the set for the 2025 impulse. Please let us know if you would like to explore any of these crystals or have any other input (see photo in previous FM report of Gemini of June 2022). **The three natural triple pointed crystal clusters** are always available for any group members who would like to meditate with them as another way to tune into group consciousness (see previous photo from March 2022 Pisces report). **Of three new 'Circumcentral' crystals two are still on a Lay-Away plan** to be here by the Summer Solstice of 2025 for the Hierarchical Group Impulse year of 2025 and the first has arrived before the recent past Full Moon of Taurus (see photo below or <http://www.sam2013.org/crystals.html> on our website for more information).



- 3. Poppy research at BioFarmland (BFL)** at Virginia's suggestion. Seeds from this year's wild Poppy harvest were collected and planted in last June for growing during the 2024 season.
- 4. Revised and renewed Hemp Museum suggestion** presented to Zoli, Virginia, and Leontina as a possible group project. There was similar input about local, village or household museums from the "Socio-Economico-Cultural Rebirth of the Romanian Village" conference in Item 2 above.
- 5. Based on Leontina's previous intentions to establish an educational location near her home further discussions are going on about** a location, financing, possible links to other hemp projects and people. An initial estimate to get a small workshop space built on her land, for materials with mainly voluntary labor or construction, is 3,000 Euros. Due to challenges encountered with the political system at her home location, Leontina has decided to stop for the moment Sopronul Cultural and the building of the dome until the environment becomes more friendly to her projects. See previous update concerning Pamantul Stramosesc in the FM 2023 Sagittarius Report.
- 6. SuonAngelMiriam have met personally with Georghe Piperea** and joined his class action law suit against the constitutionality of mandates which is moving forward as discussed in the Full Moon cover letter for Capricorn (2021). September 2022 hearing produced a change in how and who the law suit will be claiming as the defendants and the suit is continuing now at the appeal stage of litigation. Recent meetings were held in Bucharest at the International Crisis Summit 4 and in Alba Iulia during the Romanian Independence and Gold Party fourth anniversary celebrations in

December 2023. Let us know if you have additional comments or questions or would like to have copies of the programs and weblinks to past information or videos for these meetings.

7. **SuonAngelMiriam are continuing our interaction with Katharina documenting** how to manage and implement new and better ways of herb growing, drying, processing, soil regeneration, etc.
8. **SuonAngelMiriam are interacting with Virginia on her Bio-Resonance and Herbal and Aromatherapy courses, consultations** and treatments along with the consideration of the SAM2013 Synthesise Tri-Level Color Set as liquids. Updated at meetings in September and October 2022, continuing with Virginia's Certified Herbal and Aroma Therapy courses #1 and now #2 which was in March 2023 and had another meeting at EsotericFest in June 2023 (also see Item #2 below in previous activities archive). The most recent meeting was held at EsotericFest in November 2023 with plans for the next meeting in Spring once work is completed on Color and Crystal Course educational manuals.
9. **SuonAngelMiriam are working with Remus and others on updating and expanding** one of his personal spirituality courses on Self Esteem as an Esoteric Group project. Anyone interested in knowing more or helping in this group project please let us know. Latest update was at EsotericFest in June 23 with another meeting being planned for this autumn or winter.
10. **We participated in Remus' course about Stress Management** held through anatecor which is related to Virginia's fitotherapy course. We also attended the prayer zoom meeting he and Anatecor organized for the professor Mircea Stefea who passed recently.
11. **SuonAngelMiriam are working with Aurellian on how some of the concepts of his book and course** on "The Numerology of the Soul" might relate and correspond to the SAM2013 Synthesis Tri-Level Color System numerology. Both Aurellian and Suon have had direct contact with Yogi Bahjan who taught the numerology of the soul concepts.
12. **SuonAngelMiriam are working with Mircea on ways of distributing SAMfume** and other products and working more closely together on the other projects listed above. Recent meetings held in September Singfest and at the Singureni Christmas Fair 2022 and then in June 2023 also.

#### **C. Previous Activities Archive:**

1. **Hemp** for cooperative research at BioFarmland (BFL) on hold after 3 years of testing.
2. **2023 Timisoara Cultural Capital office cooperative event named 'SAMatate'**. See FM Sagittarius 2023 for final update on this report.

#### **D. General Notes and considerations about the group, cycles, meditation and information flow:**

1. **We are happy to get to know each other better**, or other ways that we may cooperate either personally, or as organizations. Please let us know if you would like any other meetings or if you have any other comments or questions.
2. **2023 continues the new seven year cycle started in 2020**. The final major group 'impact' has been made in 2019 prior to the next 100 year 'impulse' which happens during 2025.
3. **It might be considered that these Group Meditations seek** to make use of the spiritual opportunities that the cycles of full moons, solstices and equinoxes, Group Festival Weeks and Centennial Impulse years provide. The unique energies associated with each constellation, season and longer cycles are directed into the consciousness as trans-formative qualities that can lift and expand our hearts and minds.
4. **It might be considered that Group Living tends to the fulfillment of free will in service** and, as this is gradually understood, coming together to co-operate on issues for the benefit of the whole without intentions to dominate, interfere or impose on others. The vision is there, the future is assured, but the key to its successful implementation is that co-operation has to be based on intentions that are based on the good of the whole rather than a focus on self-interest.
5. **In all meditation it is of value for the student to remember that**, from the standpoint of permanent benefit, it is easier to meditate effectively during the period from the new moon to the full moon, than from the full moon to the new moon. The first half of the lunar cycle is one of intensification, absorption and accretion; the second half is one of assimilation and distribution. More real progress over a long period can be made by observing this cyclic law.
6. **Wisely utilizing newly acquired energies keeps inflowing and out flowing channels open** and prevents Sycal (psychical), Astral (emotional), Mental (intellectual) congestions, which may otherwise be experienced, with their accompanying physical consequences.
7. **The following regular monthly cycle is for the group information flow:**
  - a. Full Moon (five days): Two days before, the day of (meditation), and two days after Full Moon for getting impressions.
  - b. The week after the 5 days of the Full Moon: For letting us know or sharing of any impressions during the preceding 5 days. Plus us transcribing our own impressions.
  - c. Second week after Full Moon for 'Anchoring' or 'Grounding' impressions through gathering other information or following up on activities based on the impressions. Possible New Moon meditation by those who want and ending that Full Moon Cycle.
  - d. Third week after Full Moon (just after the New Moon): Starting to build up to the next Full Moon having any questions to impressions shared and answered and any activities based on impressions started or completed.
  - e. Fourth week after the Full Moon (just before the next Full Moon): Coming out with the Keynote and information and timing of the next Full Moon, including the shared impressions or activity from the last Full Moon.

**Addendum 1: Capricorn, The Goat, constellation hypothesizes and considerations on the Galactic Triangles from EA:**

**CAPRICORN, THE GOAT:**

This study will fall into three parts as earlier indicated:

1. Triangles of Energy—constellations.
2. Triangles of Force—planetary triplicities.
3. The Triangles and the Centres—planetary and human.

**First Triangle:**

The Pleiades . . . Cancer . . . Venus.  
Humanity.

**Second Triangle:**

The Great Bear . . . Aries . . . Pluto.  
Shamballa.

**Third Triangle:**

Sirius . . . Leo . . . Jupiter.  
Hierarchy.

Next I will deal with an analysis of three groups of triangles which are of major importance to humanity at this time and which follow upon information earlier given. These groups of triangles emanate energies which reach through space to the individual man and, therefore, cannot be ignored. They are:

The Great Bear	The Pleiades	Sirius
Leo	Transmit energy via Capricorn	Pisces
Saturn	These transmit energy via Mercury	Uranus
Planetary head centre	Reaching the following centres Planetary ajna centre	Planetary heart
Disciple's head centre	From thence to Disciple's ajna centre	Disciple's heart centre
The base of the spine	and eventually control The throat centre	the solar plexus

I will also take up with you some of the points and indications which are hinted at in Tabulation IX, relating to the twelve signs of the zodiac... Certain major streams of conditioning energies will be seen related to each other and to our Earth and these fall into two groups:

1. The ray energies which we are told emanate from the Great Bear in seven great out-raying streams of force.
2. The inherent energies of the twelve constellations which blend with the ray energies, producing the essential dualism of manifested life, and incidentally are responsible for the peculiar difficulties confronting humanity on the arc of evolutionary experience upon our planet.

Again I would repeat that what I shall have to say will be related to present world conditions, to humanity and also—for practical teaching and application—to the life of the individual disciple. Necessarily, these energies have a cosmic, systemic and planetary significance but these no disciple can as yet grasp; personality has to be transcended before even the earlier stages of the understanding of these mysteries

become possible, and this transcendence is something you have not yet accomplished but which some day inevitably you will.

Once man is impersonal and free from the reactions of the lower self, and his consciousness is illumined by the clear light of the intuition, then his "window of vision" becomes clarified and his sight into reality is unimpeded. Obstructions (always erected by humanity itself) are removed and he sees all life and form in their true relation and can comprehend, and even occultly "see," the "passage of the energies."

The relationship of certain rays and cosmic triangles may become clearer to you if the following tabulation is studied with care.

NOTE: The seven stars of the Great Bear are the originating sources of the seven rays of our solar system. The seven Rishis (as They are called) of the Great Bear express Themselves through the medium of the seven planetary Logoi Who are Their Representatives and to Whom They stand in the relation of cosmic Prototype. The seven planetary Gods manifest through the medium of the seven sacred planets. Each of these seven rays is transmitted into our solar system through the medium of three constellations and their ruling planets...

### TABULATION IX - A COSMIC SERIES OF INTERRELATED TRIANGLES

(The Rays, Constellations and Planets)

#### Ray (only Rays I, III, VII shown because they have Capricorn in the triangles)

	<u>Constellations</u>	<u>Planets</u>	
		<u>Orthodox</u>	<u>Esoteric</u>
I. Will or Power	Aries Leo <b>Capricorn</b>	Mars The Sun <b>Saturn</b>	Mercury The Sun <b>Saturn</b>
III. Active Intelligence	Cancer Libra <b>Capricorn</b>	The Moon Venus <b>Saturn</b>	Neptune Uranus <b>Saturn</b>
VII. Ceremonial Order	Aries Cancer <b>Capricorn</b>	Mars The Moon <b>Saturn</b>	Mercury Neptune <b>Saturn</b>

All these appearances, expressions of qualities and material evidences of life are the symbols or outer and visible signs of inner and spiritual realities or of Life, whatever you may mean by that term...

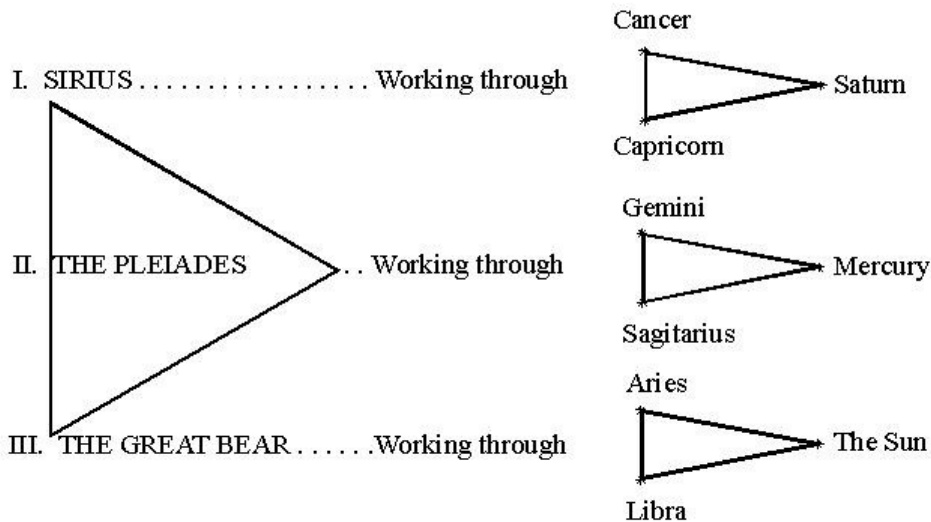
...Again and repeatedly, students must remind themselves that we are considering the impact of energy upon energy units (all qualified and producing appearance) and with the response of those energy units to the streams of force which reach them from "the furthest centre." It is in the development of response to distant points of contact and emanating sources of energy that the needed sensitivity is produced. Sensitivity, generally speaking, is of a threefold nature:

1. Sensitivity to that which is found within oneself. This, when the consciousness is adequately self-sufficient, opens a door for the entrance of energies coming from the "middle centre." I speak in symbols and for those whose knowledge of cosmic location and of points in time and space will enable them to comprehend; to the uninitiate, I simply say, "Respond to soul impact."
2. Sensitivity to that which emanates from the "centres left behind" or to those streams of vital energy which lie active and focussed below the threshold of the waking consciousness. They stir the threads of memory; they draw backward the glances (and there lies magic in the energy of the eye) of the onward moving Point, the Pilgrim on his way; they condition through ancient habit the responsiveness of the units in the form.
3. A developed sensitivity which emerges from the "furthest centre" at first unconsciously employed and later consciously directed and attuned - a fully magnetic and attractive sensitivity. Forget not that true interplay imposes the condition of reciprocity and that the two points or termini of a line eventually vibrate in unison.

... We might consequently state that the forces of:

2. Gemini—Sagittarius—Mercury (which are an expression of the Pleiades) enable the Probationary Disciple to pass on to the Path of Accepted Discipleship. He is then becoming increasingly intuitive and entirely one-pointed whilst the nature of the pairs of opposites is clearer to him. The relation of the Mother-aspect (as embodied in the Pleiades) and of the Christ-child, hidden within the form of the personality, is realised and the inner, spiritual man institutes the process of initial identification with the spiritual entity on its own plane; the little self begins to react consciously and with increasing frequency to the higher Self. The man "presses forward on that Path wherein he learns to see..."

... Five constellations are not so intimately concerned with the mass human crises but are more definitely and specifically related to the unfoldment of the individual disciple. These are: Sagittarius, Libra, Taurus, Pisces and Aquarius...



... I wonder if you can grasp at least partially and symbolically the fact that these triangles must not be thought of as placed, static and eternally the same, or even as three dimensional. They must be regarded as in rapid movement, revolving eternally in space and ceaselessly moving onward and as of fourth and fifth dimensional extension. There is no way of depicting them or of bringing them visually to your attention, for only the inner eye of vision can imagine their progression, position or appearance. These three major triangles are only partially as yet in expression as far as our solar system is concerned and only one point of the great triangle—as for instance one point of the Great Bear—constitutes with Aries a related line of force; only one point of Aries—within itself or within its own range of interplay with Leo and Capricorn (see Tabulation VIII) is related to Pluto. Therefore the entire cosmic web and solar system is an intricate, constantly moving, interwoven series of triangles wherein each point of a triangle emanates three lines or streams of energy (nine in all); it is likewise responsive to and receptive of the energies—likewise triple in nature—which lie within its periphery or sphere of influence and vibratory activity...

... For the remainder of this section on the Science of Triangles, I shall take up those triangles which are at this time and in this world cycle producing effects in the human consciousness. These effects are of two kinds: those which are general, not so easily discernible and which affect the masses of men, and those which are more specific in their results, more tangibly effective and which serve to condition the consciousness of the world aspirants, disciples and initiates. Today, this dual movement of energies is going on, producing a slow, steady awakening of the mass consciousness so that individual self-consciousness on a large scale will be the result and the more rapid stimulation of the already awakened consciousness of advanced humanity so that initiation will be achieved...

The effectiveness of this dual process can be seen if it is realised that three great signs—Leo, Sagittarius, Aquarius—are today exceedingly active and working in close relation with each other. They are the three signs whose energies are affecting humanity as a whole—as a kingdom in nature. Leo: the sign of the self-conscious individual is potent in its mass effect and today, through the stress of circumstance and the dire results of certain events, thousands of men and women are stepping out of the ranks of the mass-

conscious herd and out of the deep sleep of irresponsibility and becoming aware of themselves as detached, functioning entities. Sagittarius is powerfully affecting the world aspirants and leading them towards those attitudes of mind which will produce an unswerving allegiance to the spiritual values and an unalterable adherence to the good of humanity. Aquarius is—with equal potency—affecting the world disciples and initiates, leading them to world service on a large scale, producing group activity and that living usefulness which is the hall-mark of the pledged disciple. The influence of these three constellations is felt through their esoteric planets, and the mass movement in consciousness (for which Leo is responsible) can be noted as possible even by the novice when he realises that the ruling planets in Leo are, from all three angles—exoteric, esoteric and hierarchical—the Sun. The mass movement towards individual self-consciousness is today enormously intensified as is the paralleling individual movement towards initiation...

... three lines or streams of energy in man may be listed as follows (SAM – the table below shows the basic Ray, Consciousness, Cosmic and Zodiacal correspondences of the Directive, Educative and Intelligence/Activity managerial leadership positions of the group triangles. The table indicates that the Director positions assumed by Suon, Zoli and Katharina are mainly qualified or influenced by the Great Bear on a cosmic level and Leo on a zodiacal level; the Educative positions assumed by Angel, Virginia and Aurelian are mainly qualified and influenced by Sirius on a cosmic level and Pisces on a zodiacal level; and the Intelligence positions assumed by Mircea, Leontina and Remus are mainly qualified or influenced by the Pleiades on a cosmic level and Capricorn on a zodiacal level. Therefore, this is a full moon that could be more beneficial or influential for Mircea, Leontina and Remus who are the assumed managerial intelligence leaders of the triangles. If anyone has comments or questions about this please let us know.):

Ray 1	Ray 2	Ray 3
Will. Purpose. (SAM - Directive)	Love-Wisdom. (SAM - Educative)	Active Intelligence. (SAM – Intelligence)
Spirit.	Consciousness.	Form.
1. The Great Bear Cosmic.	Sirius Cosmic.	The Pleiades. Cosmic.
2. Leo Zodiacal.	Pisces Zodiacal.	<b>Capricorn.</b> Zodiacal.

... (SAM – an ancient way of expressing the above table for Capricorn, Ray 3 determining and qualifying factors is):

In some unusual manner (from the human angle), all that concerns the development of mankind has been—down the ages—expressed by him in terms of illumination and knowledge, in terms of sight and of the entrance of light, thus leading to revelation and (incidentally) to the true theme of astrological interpretation. From this peculiar angle, therefore, we can approach the great Triangles with which we are today concerned and deal also with their significance in terms of Light. This significance and approach can be summed up in the following stanzas (SAM – only stanza IV shown since it is about Capricorn) from the Old Commentary which—if studied carefully—will throw much light upon the theme of this particular subject:

Stanza IV (SAM - about Capricorn). The seven Mothers blend their light and make it six (refers to the lost Pleiad, A.A.B.) and yet the seven still are there. Their light is different from the other lights. This light evokes response from that which shouts aloud: 'I am the densest point of all the concrete world (Capricorn. A.A.B.). I am a tomb; I also am the womb. I am the rock which sinks itself into the deep of matter. I am the mountain-top on which the Son is born on which the Sun is seen and that which catches the first rays of light.' To me a Messenger comes forth (Mercury. A.A.B.) and says 'the Dayspring from on high is on the way, sent by the Father to the Mother.' Upon his way unto this nether star we call the Earth he stopped at a bright sun where shines the light of love (Sirius. A.A.B.) and there received the accolade of love. So thus he brings bright gifts to man. For he is man himself and from these three (The Pleiades, Capricorn, Mercury. A.A.B.) Man takes a nature which is his today. Son of the Mother, born from the tomb and showing after birth the light which he has taken from them all...

...Earlier in this treatise, I gave you the relation between the rays and the constellations and stated that each of the seven rays expressed itself through the medium of three constellations or through a triangle of energies. This relation is the basis of the entire Science of Triangles and, therefore, of astrology itself; it is also related to the rays, the constellations, their ruling planets and our Earth in a great synthesis of energies; it relates our solar system to the larger whole and our tiny non-sacred planet to the solar system. Let me repeat that statement and thus indicate to you some vital facts anent this world of interweaving energies. The Rays pour through, are expressed by and are transmitted through the following constellations:

<b>Ray I</b>	<b>Aries</b>	<b>Leo</b>	<b>Capricorn</b>
Ray II	Gemini	Virgo	Pisces
<b>Ray III</b>	<b>Cancer</b>	<b>Libra</b>	<b>Capricorn</b>
Ray IV	Taurus	Scorpio	Sagittarius
Ray V	Leo	Sagittarius	Aquarius
Ray VI	Virgo	Sagittarius	Pisces
<b>Ray VII</b>	<b>Aries</b>	<b>Cancer</b>	<b>Capricorn</b>

Certain interesting facts emerge if this tabulation is carefully studied. Let me list some of them for you, leaving you to apply the information as may seem best to you.

(SAM only This Ray shown for Capricorn) Ray VII.—Capricorn: This Capricornian energy produces initiation and the overcoming of materialism.

... Libra is also found relatively inactive in the triangle of Ray III. Today there is no true balance but the opposition of spirit and matter is so violent that the Libran force is relatively quiescent. Ray III is expressing itself through Cancer, as far as the mass is concerned and through Capricorn, on a much smaller scale, in relation to the world disciples. Capricorn esoterically leads towards the externalisation of the Mysteries...

... Triangles of Force—Planets...At the same time, it will be obvious to you that, in relation to these simple triangles, certain interlocking triangles also emerge, as for instance the zodiacal triangle of Leo-Pisces-Capricorn and the allied planetary triangle of Saturn-Uranus-Mercury. These two triangles pour their six streams of force into our three planetary centres at this time, vitalising and stimulating the planetary triangle of Shamballa-Hierarchy-Humanity. Behind these three stands a cosmic triangle, emanating three streams of energy which pour into and through the three lesser triangles, thus potently affecting every kingdom in nature. This cosmic triangle is that of the Great Bear—Sirius—the Pleiades. This paragraph simply summarises the preceding pages and indicates the relation between four triangles of energy.

There are one or two subsidiary points which are of interest to the esoteric astrologer and these we might briefly list in connection with these effective triangles, using the word "effective" to imply conditioning and potent in results. In this present world cycle all results are of unusual significance and also unusually emphasised in human consciousness.

1. Saturn, through which energy flows from Leo, via Shamballa, to Humanity, governs two decanates in Capricorn. Hence its extreme potency today in the triangle of Humanity. Saturn breaks up existing conditions by the force of its energy impact, thus enabling the influence of Mercury to be more fully expressed. The vision can then be intuitively perceived when obstructions have been removed.

2. Leo is one of the birth signs of the zodiac; it connotes the birth of self-consciousness, as you know. Capricorn is also a birth sign, because it is also an aspect or one of the arms of the Cardinal Cross—the Cross of that which initiates or brings into being. This has a peculiar relation to Humanity. It is the birth of the two types of consciousness—self-consciousness and Christ consciousness—which are brought to the attention of humanity by the fact of this Leo force, pouring through Saturn to Humanity and thus bringing Shamballa and Humanity into a closer relation, via Capricorn, active through Mercury...

... A point arises here which is one of real moment or perhaps, I should say that a question might here be asked: How does it happen that one tiny non-sacred planet should be considered of such importance that these great Lives should be concerned with the unfoldment of mind in humanity? The answer is that they are not. It is humanity which—under the urge of great inflowing and outflowing energies—is concerned with the problem of mental development. In the last analysis, the problem of response to and interpretation of the environing contacts is one which is to be found on every planet and particularly upon the non-sacred



planets. This response must be evoked, not only in the fourth kingdom in nature but in all the kingdoms. Our solar system is one in which sensitivity to contact is the dominant quality; it is in process of becoming cosmically aware; it is driven by need and environing cosmic circumstance to develop love-wisdom and both these words are descriptive and expressive of the consciousness aspect. Love is response to contact and this—in the human being—means understanding, inclusiveness and identification. Wisdom connotes skill in action as the result of developed love and the light of understanding; it is awareness of requirements and ability to bring together into a fused relationship the need and that which will meet it. Service is essentially a scientific mode of expressing love-wisdom under the influence of one or other of the seven rays, according to the soul ray of the serving disciple. The whole problem is one concerning our planetary Logos. It might be said (in order to make our theme comprehensible to you) that the evolutionary process—from the standpoint of the ordinary human being—is to make the non-sacred planet, our Earth, responsive to cosmic impacts thus bringing more inter-related and inner integration into the logoic body of expression. There are other purposes but it is only after the third initiation that a man begins to comprehend them...

...There are, therefore, great Triangles of energy which affect the mental response apparatus of humanity and to the above triangle which concerns the unfoldment of the mind, two others can be added:

I.		1. Taurus	Desire	the incentive to evolutionary unfoldment in the human kingdom.
		2. Scorpio	Aspiration	the key to the testing of the disciple.
		<b>3. Capricorn</b>	<b>Illumination</b>	<b>the liberation of the initiate.</b>
II.		1. Sagittarius	Direction	expression of the intuition.
		2. Cancer	Incarnation	experience of realisation.
		3. Leo	Self-consciousness	mode of development.

...We have reached a point in our consideration of the Science of Triangles wherein we can pause for a minute to consider our next approach to this subject and choose the theme by means of which we can throw more light upon it. It should by now be obvious to you that this Science of Triangles concerns the beneficence of Deity and that, through the intricate combinations of cosmic, systemic and planetary triangles, the purposes of God are working out. Those purposes are motivated by love. It is through these relationships that love expresses itself, brings about the needed changes for that expression, and human consciousness is brought into the required state of inclusiveness.

...It is through the squares or the quaternial relation that the form aspect is brought into relation and adequacy to the will of Deity, expressing itself through the gradually unfolding consciousness aspect. I am explaining this situation in these simple words because it must be apparent to you that only as the soul illumines the mind can the significance of the teaching be grasped. It is only when the stage of initiation is reached that the true meaning will emerge. In the meantime, I have sought to awaken in your minds a reaction to the abstract truth lying behind the two following statements:

1. The Science of Triangles is related to the total expression of the divine triplicity of manifestation: will, love and intelligence or life, consciousness and form. Until, therefore, the disciple can express in himself the integrated resemblance to these three aspects, he will not be able to grasp the meaning of this subjective astrological science.

2. On our planet, the Science of Triangles is related to the three major aspects, as they express themselves through Shamballa, the Hierarchy and Humanity. Again, therefore, we come up against the need for the approach of the integrated human being to this science because only the man who is responsive to these three focal points of energy can understand the interplay. Only, in fact, can the man apprehend the underlying truth whose two head centres and his heart centre form a triangle of flowing energies...

...I would remind you of what I said earlier in the treatise that the Science of Triangles is related to spirit and synthesis. I would remind you also that what I have written in this astrological section of the Treatise on the Seven Rays is intended for the instruction of disciples at the close of this century (SAM – this means now)...

### **Conclusion (at this point):**

May we consider together entering into that higher state of (group/soul) 'bewilderment', especially at this cycle of Aquarian consciousness, yet strength and unity from our lower state of personal certitude and isolation to possibly obtain a universal group consciousness.