

Full Moon of Leo, fifth Full Moon of this Astrological Year, on Friday, August 12, 2022 at 04:35:34 in Romania:

The main Keynote or phrase to consider for all Leo Full Moons (each year): **“I am That and That am I.”** The Leo Full Moon Keynote of Light each year is: **“The Light of the Soul.”** Consider the Keynotes at, or as close to, the time of the Full Moon as possible and what it might mean as a Group. Each of the constellations also have at least one, but also as many as five, Ray determining energies by which they rule and of which they rule. **The main Ray energy of Leo is Ray 2.** So, Leo has a main energy of Loving Wisdom and Education. It is a recommendation to consider the Leo Keynotes as Ray 2 Keynotes. This is a direct correspondence to the information of our Color Consultations and the way this same Ray determining effects us. So, our Color Consultation information can be reviewed and related to each of the Full Moon determining energies to determine the possible effects and opportunities each Full Moon offers each of us in the group. This is explained and expanded upon from Esoteric Astrology (EA) in general in Addendum 1 from the past Aries Full Moon report (from April 2021). This year we will add information on how each constellation works as a quaternary in what are called the 3 Crosses. Addendum 1 from the April 2022 Full Moon report (three months ago) is a general introduction about the 3 Crosses, formed by the 12 Astrological signs, taken from EA. Addendum 1, below, relates specifically to Leo and how it fits into the Crosses. Leo is the fifth sign of the new Astrological year and the second of the nine distributing energy and consciousness Full Moons of the year. It is part of the Cardinal Cross. It helps bring a continuing energy to the lower distribution cycle for the year after the past building months of Aries, Taurus, and Gemini (April, May, and June).

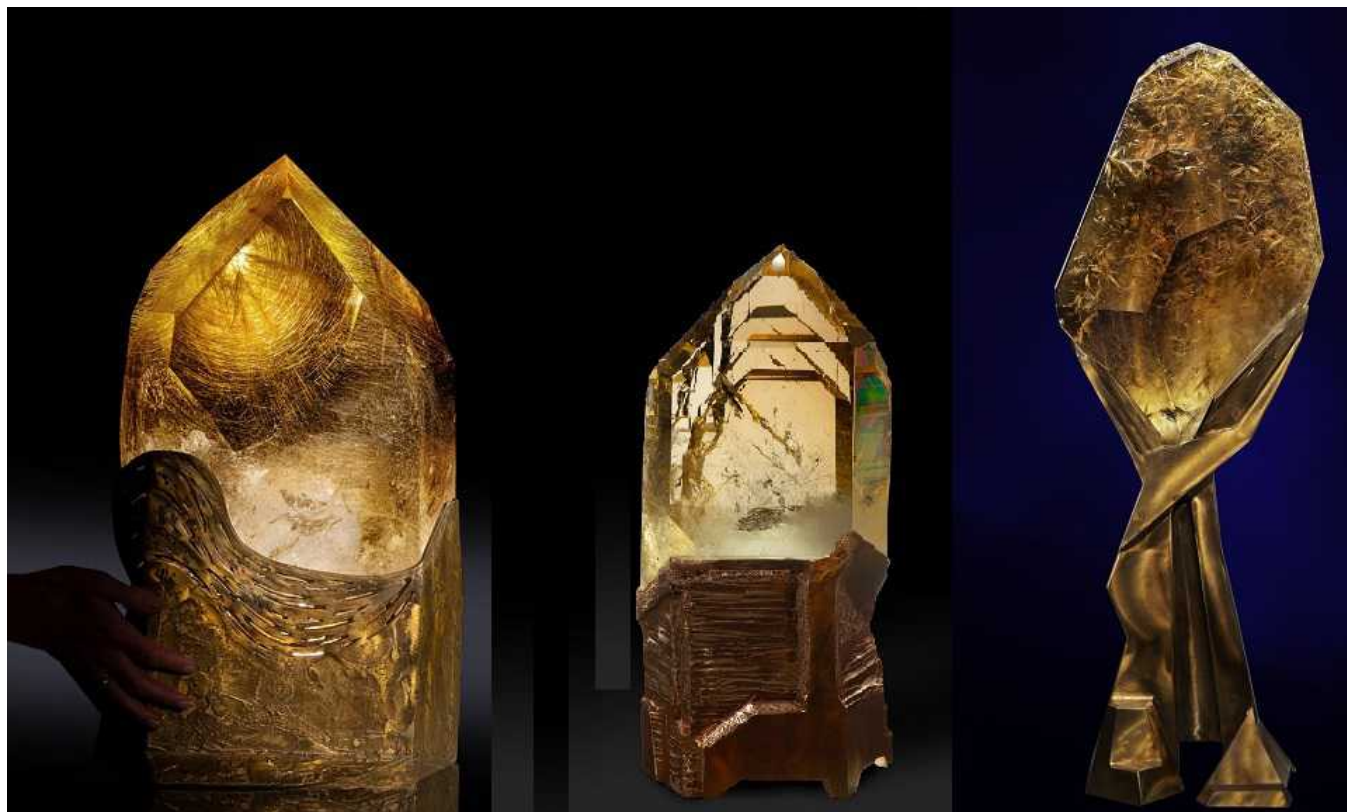
A. Notes on this coming Full Moon of August/Leo:

1. **Watch for any impressions** that may come to you before the Full Moon that may relate to the Ray 2 Keynotes and your specific Rays (from your Color Consultations), especially two days before the Full Moon, the day of the Full Moon and two days after the Full Moon. **If you want to share** any of your impressions with us please do. If you want any impressions shared with the group let us know and we will include them in the next month's meditation notes.
2. **This is the fifth of twelve Full Moons of this Astrological year** and is the second of the nine different 'Distributing Consciousness and Energy' full moons of this astrological year. The energy which is built and gathered during the past, first three 'Building' Full Moons at the beginning of the astrological year, which is also called the 'higher interlude', is now distributed over the next nine Full Moons during the end of the astrological year, which is also called the 'lower interlude'.
3. **Addendum 1 from last year's Full Moon report of Aries (from April 2021) gives reference into more insight and inspiration for how to** view some of the expanded awareness of these monthly and yearly Full Moon cycles as we enter into the fourth Astrological Year of this group formation and the group's beginning functioning.
4. **Addendum 1 from April 2022's Full Moon report of Aries (four months ago)** is a general introduction about the 3 Crosses, formed by the 12 Astrological signs, taken from EA.
5. **Addendum 1 below will give this month's expansion of how the qualifying energies of the monthly astrological sign, Leo,** fit into the three 'Crosses' or quaternaries of constellations formed by the 12 signs which may be effecting us and how to respond to the various opportunities these Crosses of energies present to our group including each individual.
6. **The 2022-3 astrological year Annual Keynote is,** "LET THE LIGHT OF THE SEVEN RAYS BLEND WITH THE SEVENTH RAY, AND LIGHT SUPERNAL USHER IN THE NEW CIVILIZATION."

B. Notes and Activities on or since the last Full Moon July/Cancer:

1. **SuonAngelMiriam meditated at the time of the new and full moon together. We had what we consider stronger** meditations of positive distributing of this astrological year's beginning point of the Lower Interlude cycle throughout the Occult, Esoteric and Exoteric triangular group.
2. **SuonAngel are talking with 2023 Timisoara Cultural Capital office about a cooperative event possibly named 'SAMatate'** between Favisan, BFL/SolarCity (The Natural Way Assoc. - TNWA), the Hemp Museum, SAM2013 and possibly Anatacor and Aurellian's or other groups for the Cultural Capital celebrations rescheduled to 2023. We are organizing information for possibly submitting an application or by possibly joining in the Asociatia Cries project next year in 2022 and for the main event in 2023.

3. **The Group Central Pillar Crystals** and the Esoteric and Occult crystal sets are now finalized along with any rearranging of the other crystals of the set for the 2025 impulse. Please let us know if you would like to explore any of these crystals or have any other input (see photo in previous FM report of Gemini of June 2022).
4. **The three natural triple pointed crystal clusters** are always available for any group members who would like to meditate with them as another way to tune into group consciousness (see previous photo from March 2022 Pisces report).
5. **Three new 'Circumcentral' crystals have been put on a Lay-Away plan** to be here by the Summer Solstice of 2025 for the Hierarchical Group Impulse year of 2025 (see photo below).



6. **Poppy research at BioFarmland (BFL)** at Virginia's suggestion. New organic seeds have arrived and were planted for the 2022 season but did not grow again and will be planted again for 2023.
7. **Revised and renewed Hemp Museum suggestion** presented to Zoli, Virginia, and Leontina as a possible group project. More discussions with Leontina last month in Timisoara.
8. **Based on Leontina's previous intentions to establish an educational location near her home further discussions are going on about** a location, financing, possible links to other hemp projects and people. An initial estimate to get a small workshop space built on her land, for materials with mainly voluntary labor or construction, is 3,000 Euros. Anyone wanting a more specific update or to help with initial financing please either contact Leontina or us.
9. **SuonAngelMiriam have met personally with Georghe Piperea** and joined his class action law suit against the constitutionality of mandates which is moving forward as discussed in the Full Moon cover letter for Capricorn (2021). Hearing set for September 2022. Let us know if you have additional comments or questions.
10. **SuonAngelMiriam are continuing our interaction with Katharina documenting** how to manage and implement new and better ways of herb growing, drying, processing, etc.
11. **SuonAngelMiriam are interacting with Virginia on her Bio-Resonance course, consultations** and treatments along with the production of the SAM2013 Synthesis Tri-Level Color Set as liquids. Updated at meeting during Esoteric Fest May 2022 and continuing.
12. **SuonAngelMiriam are working with Remus and others on updating and expanding** one of his personal spirituality courses as an Esoteric Group project. Anyone interested in knowing more or helping in this group project please let us know.
13. **SuonAngelMiriam are working with Aurellian on how some of the concepts of his book and course** on "The Numerology of the Soul" might relate and correspond to the SAM2013 Synthesis

Tri-Level Color System numerology. Both Aurellian and Suon have had direct contact with Yogi Bahjan who taught the numerology of the soul concepts.

14. SuonAngelMiriam are working with Mircea on ways of distributing SAMfume and other products and working more closely together on the other projects listed above.

C. Previous Activities Archive:

1. **Hemp** for cooperative research at BioFarmland (BFL) on hold after 3 years of testing.

D. General Notes and considerations about the group, cycles, meditation and information flow:

1. **We are happy to get to know each other better**, or other ways that we may cooperate either personally, or as organizations. Please let us know if you would like any other meetings or if you have any other comments or questions.
2. **2022 continues the new seven year cycle started in 2020**. The final major group 'impact' has been made in 2019 prior to the next 100 year 'impulse' which happens during 2025.
3. **It might be considered that these Group Meditations seek** to make use of the spiritual opportunities that the cycles of full moons, solstices and equinoxes, Group Festival Weeks and Centennial Impulse years provide. The unique energies associated with each constellation, season and longer cycles are directed into the consciousness as trans-formative qualities that can lift and expand our hearts and minds.
4. **It might be considered that Group Living tends to the fulfillment of free will in service** and, as this is gradually understood, coming together to co-operate on issues for the benefit of the whole without intentions to dominate, interfere or impose on others. The vision is there, the future is assured, but the key to its successful implementation is that co-operation has to be based on intentions that are based on the good of the whole rather than a focus on self-interest.
5. **In all meditation it is of value for the student to remember that**, from the standpoint of permanent benefit, it is easier to meditate effectively during the period from the new moon to the full moon, than from the full moon to the new moon. The first half of the lunar cycle is one of intensification, absorption and accretion; the second half is one of assimilation and distribution. More real progress over a long period can be made by observing this cyclic law.
6. **Wisely utilizing newly acquired energies keeps inflowing and out flowing channels open** and prevents Sycal (psychical), Astral (emotional), Mental (intellectual) congestions, which may otherwise be experienced, with their accompanying physical consequences.
7. **The following regular monthly cycle is for the group information flow:**
 - a. Full Moon (five days): Two days before, the day of (meditation), and two days after Full Moon for getting impressions.
 - b. The week after the 5 days of the Full Moon: For letting us know or sharing of any impressions during the preceding 5 days. Plus us transcribing our own impressions.
 - c. Second week after Full Moon for 'Anchoring' or 'Grounding' impressions through gathering other information or following up on activities based on the impressions. Possible New Moon meditation by those who want and ending that Full Moon Cycle.
 - d. Third week after Full Moon (just after the New Moon): Starting to build up to the next Full Moon having any questions to impressions shared and answered and any activities based on impressions started or completed.
 - e. Fourth week after the Full Moon (just before the next Full Moon): Coming out with the Keynote and information and timing of the next Full Moon, including the shared impressions or activity from the last Full Moon.

Addendum 1: Leo, The Lion, constellation hypothesizes and considerations on the 3 Crosses from EA:

Passing as we are into the Aquarian Age in which the spirit of Aquarius will be exemplified in its universality and its sense of "general distribution," it is inevitable that a point of crisis should be reached. The true Leo type must react in a new and unique manner to the proffered opportunity, and when I say type, I refer to those people whose sun is in Leo or who have Leo rising. The reason for this is that Leo is the polar opposite of Aquarius, and the interplay of energies between these two is far more potent than at any previous time in racial history.

THE FIXED CROSS:

Leo, the sign we are now studying is one in which the theme of self-consciousness lies open to the investigator. Mass consciousness in Cancer gives place to individual consciousness in Leo. Out of the mass or the herd emerges the self-sufficient unit which becomes increasingly aware of its oneness, its aloneness and its isolated attitude as the "one in the centre" of its small cosmos. This attitude continues to develop and to become emphatic and dynamic (I use these words with intent), leading to the pronounced ego-centric consciousness of the selfish, intelligent man and to the ambitious display of selfish power of the man who desires place and position. But eventually the time comes when the nature of the Fixed Cross begins to dawn upon the consciousness of the man and the influence of Aquarius (the polar opposite of Leo) begins to balance that of Leo. Then there comes the gradual shift of the focus of attention away from the "one who stands alone" to the enviroing group, and an equally important shift away from selfish interests to group requirements. This gives concisely the objective which is attained by the man upon the Fixed Cross; the effect of that Cross is to bring light and liberation. This can be clearly seen if we contrast the energies of the four arms of the Cross as they are demonstrated by the man both before and after the long and drastic experience upon the Cross.

1. Taurus.—The Bull of Desire. The light of aspiration and knowledge.

2. Leo.—The Lion of Self-assertion. The Light of the Soul.
3. Scorpio.—The Agent of Deception. The Light of Liberation.
4. Aquarius.—The Chalice of Self-service. The Light of the world.

The Fixed Cross is the cross of light. And playing through this Cross all the time, and emanating from Leo, are the "fires of God"—cosmic, solar and planetary—producing purification, the intensification of the light and eventual revelation to the purified man who stands in light. From Aries comes cosmic fire; from Sagittarius comes planetary fire; and from Leo comes solar fire; and each of these fires "clears the way by burning" for the expression of the three divine aspects: spirit (Aries), soul (Leo) and body (Sagittarius). Such is the scientific basis for the yoga of fire, applied by the fully self-conscious man to the reflection of the three divine aspects in the three worlds; these are the three modes of divine expression in these three worlds. Such is the significance of the fact that it will be found that before the Door of Initiation lies the burning ground which all disciples and initiates must tread. The Leo subject treads this burning ground with will and self-effacement. When he has reached full self-consciousness and mental integration and when he has attained personality effectiveness, then he treads it—undeterred by pain.

A little thought will make it apparent to you why the Sun is the ruler of all the three conditions of Leo—exoteric, esoteric and hierarchical. It is a correct surmise that the purpose of this solar system is the unfoldment of consciousness, and if for the strictly human being self-consciousness is the goal, then the Sun must obviously rule, for it is the source of physical consciousness (exoteric and symbolic of the personality), of soul awareness (esoteric), and of spiritual life (hierarchical). I am reiterating the necessity to recognise the stimulation of consciousness as the objective of all the astrological influences because the outstanding theme of Leo is the activity of the self-conscious unit in relation to its environment or the development of sensitive response to surrounding impacts by the one who stands—as the Sun stands—at the centre of its little universe. The whole story and function of Leo and its influences can be summed up in the word "sensitivity," and this sensitivity can be studied in four stages:

1. Sensitivity to conditioning impacts from the environment, i.e., to the impacts of the world of human evolution, the three worlds or planes, through the medium of the three aspects of the response apparatus of the soul;
2. Sensitivity to the will, wishes and desires of the personality, the integrated self-conscious man, the lower self;
3. Sensitivity to the soul as the conditioning factor instead of sensitivity to the enviroing world as the conditioning factor;
4. The spiritual sensitivity of the God-Man (the soul and personality fused) to the environment. At this stage of unfoldment, the liberated man is not conditioned by his environment but begins the arduous task of conditioning it in relation to the divine plan and purpose and at the same time to cultivating sensitivity to the higher impacts of those worlds which lead to the final goal.

I want you to have this innate spiritual sensitivity and this outer material sensitivity most carefully in mind if you want truly to understand the influences of Leo upon human beings and especially upon the person born in this sign or who has this sign rising, as well as its influences upon the planet. Throughout the universe, it is the soul which is the conscious, sensitive theme of the divine plan—the soul as the anima mundi, or the soul of the world, animating all forms of life below the animal kingdom; the soul as the animal soul and the extension of this to the bodies of all animals, including the human physical body; the soul as the human soul, which is a still further expansion of the same sensitive factor but augmented or stimulated by the principle of self-awareness or of focussed personal sensitivity to all sub-human soul expression, plus awareness (conscious or unconscious) of the immortal or divine soul; the soul as the ego or spiritual soul on its own plane—the source of consciousness as far as the three worlds of evolution are concerned, and the goal of all present evolutionary processes.

1. The Mutable Cross—brings about those conditions which will produce great periods of change in the life of the planet, of a kingdom in nature or of a human being. Mercury plays a part in this.
2. The Fixed Cross—brings about, as a sequence, to these inner changes, certain great points of crisis which are unavoidable and present definite opportunity. Saturn is dominant in bringing this about.
3. The Cardinal Cross—is responsible for bringing about certain great points of synthesis, as a consequence of both change and crisis. Jupiter is responsible for the focussing of energies at this point.

For more information on the crosses and Cancer go back to the 2022 Aries and 2021 Cancer Full Moon Meditation Reports. If you need the reports sent to you again please let us know.

Conclusion (at this point):

May we consider together entering into that higher state of (group/soul) 'bewilderment' yet strength and unity from our lower state of personal certitude and isolation.