

Full Moon of Leo, sixth Full Moon of this Astrological Year, on Monday, August 19, 2024, at 20:25:35 in Romania:

The main Keynote or phrase to consider for all Leo Full Moons (each year): **“I am That and That am I.”** The Leo Full Moon Keynote of Light each year is: **“The Light of the Soul.” “(Hint 1: A reflected point of light logoic, or divine. Hint 2: The light diffused in Cancer focuses and reveals eventually a point.)”** Consider the Keynotes at, or as close to, the time of the Full Moon as possible and what it might mean as a Group. Each of the constellations also have at least one, but also as many as five, Ray determining energies by which they rule and of which they rule. **The main Ray energy of Leo is considered to be Ray 2.** So, Leo is considered to have main energies of Love Wisdom or what is considered as Understanding. In other ways, A.A.B. writes in DINAI, page 109, “this ray is preeminently the teaching ray, the ray that is sometimes called that of “light-giving influence” or the “ray of the illuminator.” “The task of all true educators is to bring light to the minds of those they instruct, so that they may walk more securely in the way which leads to the goal for any particular incarnation.” It is a recommendation to consider the Leo Keynotes as Ray 2 Keynotes. This is a direct correspondence to the information of our Color Consultations and the way this same Ray determining affects us individually and in our relationship to our group. So, our Color Consultation information can be reviewed and related to each of the Full Moon determining energies to determine the possible effects and opportunities each Full Moon offers each of us personally and in relationship with the group. This was explained and expanded upon from Esoteric Astrology (EA) in general in Addendum 1 from the past Aries Full Moon report (from April 2021 – please let us know if you would like that resent to you).

This year we are adding information on how each Ray effects the constellations as fundamental hypotheses as Addendum 1 below. Leo is the fifth different sign of this new Astrological year (which started with Aries in March) and the second of the normal 9 (but this year 10) distribution and grounding energy and consciousness Full Moons of the year. It helps to begin the lower ‘anchoring’ cycle for the astrological year after the building and higher cycle of Aries, Taurus, and Gemini (March, April, May of this year). Addendum 3 from the last Aries Full Moon report (from April 2023) is some additional information on the full moons and possible meditation forms (please let us know if you need that resent to you).

Please continue to keep in mind, from the Gemini Full Moon Report (May 2024), Addendum 2 which was two papers titled, “Vision Paper: Unfolding Work for 2024-2026” by 2025 Initiative (www.2025initiative.org) and “More details about this proposed experiment and our groups’ ideas about the unfolding opportunities of the period of 2024-2026”. The addendums started with a note from us as an introduction about the papers.

If anyone has any comments or questions on the Group Correspondence Report #4 which we consider a ‘simple yet complex’ way to expand our understanding of some of a Monadic Manifestation Triangular Group’s interactions and relationships and also some of the reasons for the misunderstandings that might accompany these interactions and relationships please let us know

We have returned to having the new moon before the full moon. This should make the rest of this year’s Full Moon meditations easier.

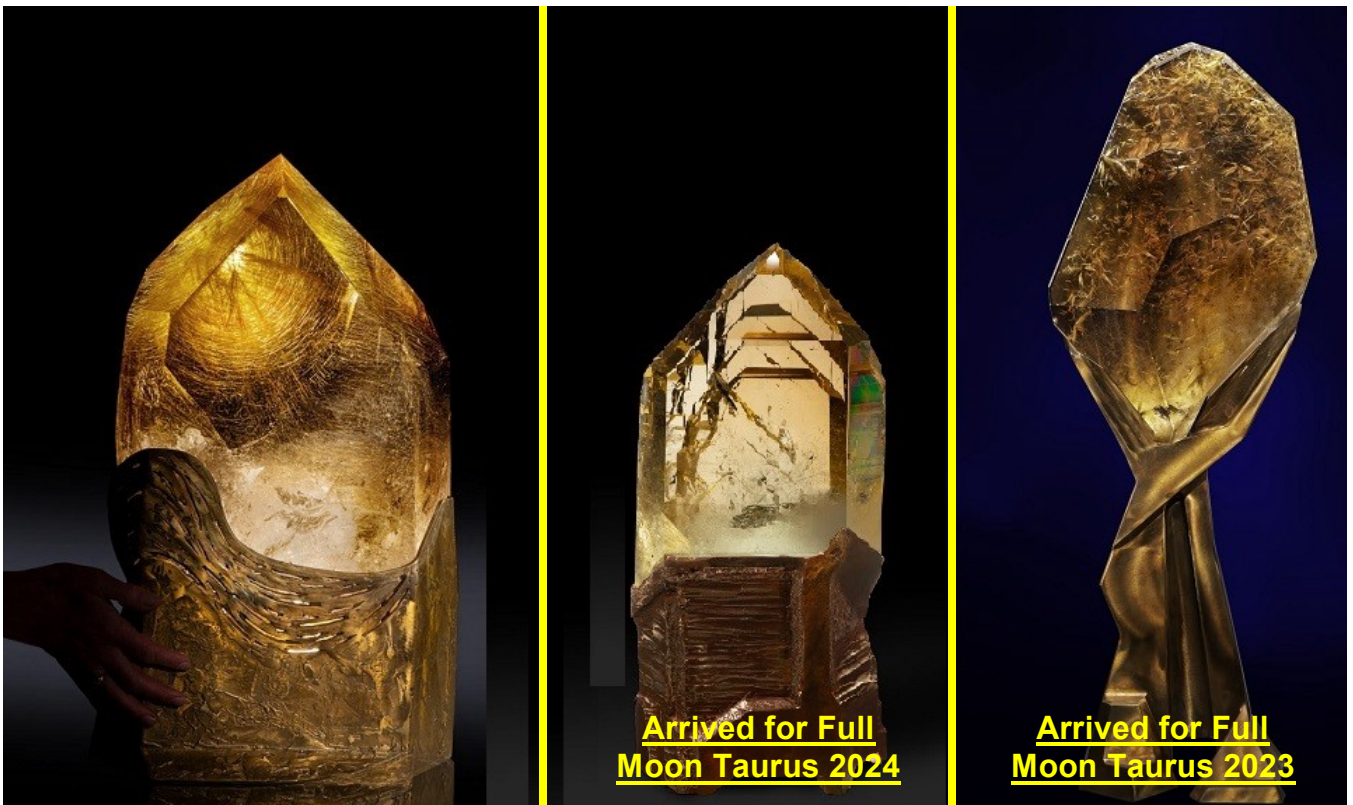
A. Notes on this coming Full Moon of August/Leo:

- 1. Watch for any impressions** that may come to you before the Full Moon that may relate to the Ray 2 Keynotes and your specific Rays (from your Color Consultations), especially two days before the Full Moon, the day of the Full Moon and two days after the Full Moon. **If you want to share** any of your impressions with us please do. If you want any impressions shared with the group let us know and we will include them in the next month’s meditation notes.
- 2. This is the fifth of twelve different Full Moons of this Astrological year (there will be thirteen Full Moons this year since there were two Full moons in the sign of Cancer this year in June and July)** and is the second of the nine different (or this year ten full moons for distribution) distribution of Consciousness and Energy’ full moons of this astrological year. The energy which is built and gathered during these first three ‘Building’ Full Moons at the beginning of the astrological year, which is also called the ‘higher interlude’, will then be distributed over the last nine different Full Moons during the end of the astrological year, which is also called the ‘lower interlude’.

3. **Addendum 1 from the Full Moon report of Aries (from April 2021) gives reference into more insight and inspiration for how to** view some of the expanded awareness of these monthly and yearly Full Moon cycles as we enter into the sixth Astrological Year of this group formation and the group's beginning functioning.
4. **Addendum 1 below relates to** how each Ray effects the constellations as fundamental hypotheses.
5. **The 2024-5 astrological year Annual Keynote is,** "LET THE GROUP DEDICATE ITSELF ANEW TO THE SERVICE OF THE COMING ONE AND DO ALL IT CAN TO PREPARE HUMAN MINDS AND HEARTS FOR THAT EVENT. WE HAVE NO OTHER LIFE INTENTION."

B. Notes and Activities on or since the last Full Moon July/Cancer 2nd:

1. **SuonAngelMiriam meditated at the time of the full moon and new moon together with Safi (when she wanted). We had what we consider** good meditations for the continuing of the grounding of consciousness cycle of the astrological year. We are also having more experiences during the toning and vocalizing parts of the meditations.
2. **The Three Group Central Pillar Crystals** and the Esoteric (based on numerological 8) and Occult (based on numerological 9) crystal sub-sets are now finalized along with any rearranging of the other crystals of the over-all set for the 2025 impulse. Please let us know if you would like to explore any of these crystals or have any other input (see photo in previous FM report of Gemini of June 2022). **The three natural triple pointed crystal clusters** are always available for any group members who would like to meditate with them as another way to tune into group consciousness (see previous photo from March 2022 Pisces report). **Of three new 'Circumcentral' crystals one is still on a Lay-Away plan** to be here by the Summer Solstice of 2025 for the Hierarchical Group Impulse year of 2025. The first of the three has arrived before the past Full Moon of Taurus 2023 and the second has arrived for this full moon of Taurus 2024 (see photo below or <http://www.sam2013.org/crystals.html> on our website for more information).



3. **Poppy research at BioFarmland (BFL)** at Virginia's suggestion. Seeds from last year's wild Poppy harvest were collected and planted in last June 2023 for growing during the 2024 season. A small number of the poppies have come out this year (May 2024) and their seeds have been encouraged to spread more next year.
4. **Revised and renewed Hemp Museum suggestion** presented to Zoli, Virginia, and Leontina as a possible group project. There was similar input about local, village or household museums from the

“Socio-Economico-Cultural Rebirth of the Romanian Village” conference in previous reports. Latest brief meeting was in Timisoara this spring to talk more informally about these topics.

5. **Based on Leontina’s previous intentions to establish an educational location near her home further discussions are going on about** a location, financing, possible links to other hemp projects and people. An initial estimate to get a small workshop space built on her land, for materials with mainly voluntary labor or construction, is 3,000 Euros. Due to challenges encountered with the political system at her home location, Leontina has decided to stop for the moment Sopronul Cultural and the building of the dome until the environment becomes more friendly to her projects. See previous update concerning Pamantul Stramosesc in the FM 2023 Sagittarius Report from November 2023.
6. **SuonAngelMiriam have met personally with Georghe Piperea** and joined his class action law suit against the constitutionality of mandates which is moving forward as discussed in the Full Moon cover letter for Capricorn (2021). September 2022 hearing produced a change in how and who the law suit will be claiming as the defendants and the suit is continuing now at the appeal stage of litigation. The next court date has been set for late January 2024. We were notified last week that the case has been lost without further appeal and we have the details of the courts decision and are awaiting for a final brief conversation with Gheorghe Piperea after June 10, 2024. We are still waiting for a final update since George is traveling due to his new election to the EU parliament. Let us know if you have additional comments or questions.
7. **SuonAngelMiriam are continuing our interaction with Katharina documenting** how to manage and implement new and better ways of herb growing, drying, processing, soil regeneration, distilling, etc.
8. **SuonAngelMiriam are interacting with Virginia on her Bio-Resonance and Herbal and Aromatherapy courses, consultations** and treatments along with the consideration of the SAM2013 Synthesis Tri-Level Color Set as liquids. Updated at meetings in September and October 2022, continuing with Virginia’s Certified Herbal and Aroma Therapy courses #1 and now #2 which was in March 2023 and had another meeting at EsotericFest in June 2023 (also see Item #2 below in previous activities archive). The most recent meeting was held at EsotericFest in November 2023 with plans for the next meeting in Spring 2024 once work is completed on Color and Crystal Course educational manuals. The manuals have been completed in February 2024 and two meetings were held in March to go over more input and refinements of the process prior to a May meeting at EsotericFest in Timisoara. In meetings since the May EsotericFest The Color Course has been approved for accrediting by ANATECOR and plans are proceeding to get further details and SAM2013 products ready for the course materials.
9. **SuonAngelMiriam are working with Remus and others on updating and expanding** one of his personal spirituality courses on Self Esteem as an Esoteric Group project. Anyone interested in knowing more or helping in this group project please let us know. Latest update was in October 2023.
10. **We participated in Remus’ course about Stress Management** held through ANATECOR which is related to Virginia’s fitotherapy course. We also attended the prayer zoom meeting he and Anatecor organized for the professor Mircea Stefea who passed recently.
11. **SuonAngelMiriam are working with Aurellian on how some of the concepts of his book and course** on “The Numerology of the Soul” might relate and correspond to the SAM2013 Synthesis Tri-Level Color System numerology. Both Aurellian and Suon have had direct contact with Yogi Bahjan who taught the numerology of the soul concepts.
12. **SuonAngelMiriam are working with Mircea on ways of distributing SAMfume** and other products and working more closely together on the other projects listed above. Recent meetings held in September Singfest and at the Singureni Christmas Fair 2022 and then in June 2023 also. The last meeting in Bucharest in March, 2024 for a brief update.

C. Previous Activities Archive:

1. **Hemp** for cooperative research at BioFarmland (BFL) on hold after 3 years of testing.
2. **2023 Timisoara Cultural Capital office cooperative event named ‘SAMatate’**. See FM Sagittarius 2023 for final update on this report.

D. General Notes and considerations about the group, cycles, meditation and information flow:

1. **We are happy to get to know each other better**, or other ways that we may cooperate either personally, or as organizations. Please let us know if you would like any other meetings or if you have any other comments or questions.

2. **2024 continues the new seven year cycle started in 2020.** The final major group 'impact' has been made in 2019 prior to the next 100 year 'impulse' which happens during 2025.
3. **It might be considered that these Group Meditations seek** to make use of the spiritual opportunities that the cycles of full moons, solstices and equinoxes, Group Festival Weeks and Centennial Impulse years provide. The unique energies associated with each constellation, season and longer cycles are directed into the consciousness as trans-formative qualities that can lift and expand our hearts and minds.
4. **It might be considered that Group Living tends to the fulfillment of free will in service** and, as this is gradually understood, coming together to co-operate on issues for the benefit of the whole without intentions to dominate, interfere or impose on others. The vision is there, the future is assured, but the key to its successful implementation is that co-operation has to be based on intentions that are based on the good of the whole rather than a focus on self-interest.
5. **In all meditation it is of value for the student to remember that,** from the standpoint of permanent benefit, it is easier to meditate effectively during the period from the new moon to the full moon, than from the full moon to the new moon. The first half of the lunar cycle is one of intensification, absorption and accretion; the second half is one of assimilation and distribution. More real progress over a long period can be made by observing this cyclic law.
6. **Wisely utilizing newly acquired energies keeps inflowing and out flowing channels open** and prevents Sycal (psychical), Astral (emotional), Mental (intellectual) congestions, which may otherwise be experienced, with their accompanying physical consequences.
7. **The following regular monthly cycle is for the group information flow:**
 - a. Full Moon (five days): Two days before, the day of (meditation), and two days after Full Moon for getting impressions.
 - b. The week after the 5 days of the Full Moon: For letting us know or sharing of any impressions during the preceding 5 days. Plus us transcribing our own impressions.
 - c. Second week after Full Moon for 'Anchoring' or 'Grounding' impressions through gathering other information or following up on activities based on the impressions. Possible New Moon meditation by those who want and ending that Full Moon Cycle.
 - d. Third week after Full Moon (just after the New Moon): Starting to build up to the next Full Moon having any questions to impressions shared and answered and any activities based on impressions started or completed.
 - e. Fourth week after the Full Moon (just before the next Full Moon): Coming out with the Keynote and information and timing of the next Full Moon, including the shared impressions or activity from the last Full Moon.

Addendum 1:

Ray effects on the constellations as fundamental hypotheses from EA
(Free online at https://www.lucistrust.org/online_books/esoteric_astrology_obooks):

The Zodiac and the Rays (Continued from the last Full Moon report of 2nd Cancer):

... 2. The Creative Hierarchies.

It might here be appropriate if I interpolated a chart or a tabulation which may be found suggestive of some of these interlocking energies which play through, traverse, return, stimulate and energize every part of our solar system. They only evoke conscious response where the vehicle of expression and of response is adequate to the impact, and this statement is true of the solar Logos, the planetary Logoi, and of all forms in all the kingdoms upon our planet. Unconscious reaction will of course exist, but it will be on a general or mass scale, and much of it pours through to us from these distant constellations, via the fifth Creative Hierarchy. This Hierarchy, being on the verge of liberation, is to be found on the intellectual level of consciousness and can, therefore, be used as a focal point and a transmitter of the higher energies to our solar system and to the planet. If you make a careful study of the chart of the twelve Creative Hierarchies, page 34, you will note that this Hierarchy is influencing, and is influenced by, the seventh Ray of Magical Order and of Ceremonial Organization. The basic function of this ray is to relate spirit and matter and produce the manifested form. The sign of the zodiac with which it is closely connected is that of Cancer, the Crab, which is a mass sign and one of the "gates" into manifested life.

The following information anent the Hierarchies may prove useful. It has been gathered from various sources.

I might here remind you that the seven planes of our solar system are the seven sub-planes of the cosmic physical plane. The four Creative Hierarchies which have achieved liberation are now to be found focused upon the cosmic astral plane; hence their potency even when out of manifestation. The fifth Creative Hierarchy exists on the highest etheric level and will join the other four Hierarchies when the sixth Creative Hierarchy has measured up to cosmic opportunity and is itself nearing liberation. The following is a tabulation showing some of the astrological relationships in connection with:

1. The constellation of the Great Bear.
2. The Pleiades or the Seven Sisters.
3. Sirius.

4. The seven solar systems.

TABULATIONS I AND II

THE SEVEN CREATIVE HIERARCHIES IN ACTIVE PLANETARY EXPRESSION

1. The Hierarchy of Creative Powers is divided esoterically into seven (4 and 3) within the Twelve Great Orders.

2. Three Hierarchies are—in this greater cycle—of profound significance, the fourth or human Creative Hierarchy and the two deva Hierarchies, the fifth and the sixth.

3. The fourth Creative Hierarchy is in reality the ninth and that is why it is called the Hierarchy of Initiates. This can be seen by referring to the chart.

4. We are told in *A Treatise on Cosmic Fire* that in the ninth, tenth and eleventh Hierarchies (counting from the bottom upwards) lies the clue to the nature of Agni, the Lord of Fire, the sum total of systemic vitality.

5. Much light can come to the earnest student through a study of the numbers connected with these Hierarchies.

a. The first 5 are regarded as pure abstractions.

b. Hierarchy One has the numbers—6.1.7.

Hierarchy Two has the numbers—7.2.6.

Hierarchy Three has the numbers—8.3.5.

Hierarchy Four has the numbers—9.4.4.

Hierarchy Five has the numbers—10.5.3.

Hierarchy Six has the numbers—11.6.2.

Hierarchy Seven has the numbers—12.7.1.

It is necessary to take note of this as in *The Secret Doctrine* reference will be found to the Hierarchies under different numbers. This serves to conceal, but it will also confuse the student.

6. The first four Hierarchies achieved liberation in the first solar system. Their influence reached our Earth through the medium of the fifth Creative Hierarchy.

7. These are, therefore, related to the four rays which work as minor rays of Attribute under the great major third Ray of Active Intelligence.

8. Pisces is seen at the head of the list of zodiacal signs because it is governing the present great astrological world cycle of 25,000 years. It was also one of the dominant signs, influencing our planet at the time of individualization when the human kingdom came into being. It is basically related to the first or highest Creative Hierarchy which is, in its turn, related to the third Ray of Active Intelligence. It was the product of the first solar system. The development of illumination through an awakened intelligence is the first goal of humanity.

9. The fifth Creative Hierarchy (also numbered 8) is on the verge of liberation. It is peculiarly connected with the tenth Creative Hierarchy, with the constellation Capricorn and with the human personality which veils and temporarily hides the Christ principle behind both form and mind. Eight is, under some numerical systems, regarded as the number of the Christ.

10. The Greater Builders and the Lesser Builders, working on the second and third planes of our solar system, have their activities reflected in the work of the Lunar Lords and the elemental lives.

11. You will note that the human Hierarchy (on chart 9-IV-4) is assigned no particular element as it has to fuse and synthesize them all. This is part of the great tests of initiation under Scorpio.

12. This chart is drawn up in relation only to the fourth Creative Hierarchy, the human. It is not drawn in relation to the other planetary manifestations.

(The chart has been compiled from the very limited stock of knowledge that has thus far been revealed on the subject, and it is as correct as possible under the circumstances...)

To Be Continued in the next Full Moon report of Virgo.

To be considered below as closing for this Full Moon Addendum of Leo.

...Again and repeatedly, students must remind themselves that we are considering the impact of energy upon energy units (all qualified and producing appearance) and with the response of those energy units to the streams of force which reach them from "the furthest center." It is in the development of response to distant points of contact and emanating sources of energy that the needed sensitivity is produced. Sensitivity, generally speaking, is of a threefold nature:

1. Sensitivity to that which is found within oneself. This, when the consciousness is adequately self-sufficient, opens a door for the entrance of energies coming from the "middle center." I speak in symbols and for those whose knowledge of cosmic location and of points in time and space will enable them to comprehend; to the uninitiate, I simply say, "Respond to soul impact."
2. Sensitivity to that which emanates from the "centers left behind" or to those streams of vital energy which lie active and focused below the threshold of the waking consciousness. They stir the threads of memory; they draw backward the glances (and there lies magic in the energy of the eye) of the onward moving Point, the Pilgrim on his way; they condition through ancient habit the responsiveness of the units in the form.
3. A developed sensitivity which emerges from the "furthest center" at first unconsciously employed and later consciously directed and attuned - a fully magnetic and attractive sensitivity. Forget not that true interplay imposes the condition of reciprocity and that the two points or termini of a line eventually vibrate in unison.

The Rays pour through, are expressed by and are transmitted through the following constellations:

| | | | |
|---------|--------|-------------|-------------|
| Ray I | Aries | Leo | Capricorn |
| Ray II | Gemini | Virgo | Pisces |
| Ray III | Cancer | Libra | Capricorn |
| Ray IV | Taurus | Scorpio | Sagittarius |
| Ray V | Leo | Sagittarius | Aquarius |
| Ray VI | Virgo | Sagittarius | Pisces |
| Ray VII | Aries | Cancer | Capricorn |

Conclusion (at this point):

May we consider together entering into that higher state of (group/soul) 'bewilderment', especially at this cycle of Aquarian consciousness, yet strength and unity from our lower state of personal certitude and isolation to possibly obtain a universal group consciousness.