

**Full Moon of Pisces, twelfth Full Moon of this Astrological Year, on Saturday, February 24, 2024 at 14:30:11 in Romania:**

The main Keynote or phrase to consider for all Pisces Full Moons (each year): **“I leave the Father's home and turning back, I save.”** The Pisces Full Moon Keynote of Light each year is: **“The Light of the World.”** (Hint: **This is the light, revealing the light of life itself. It ends for ever the darkness of matter.**)” Consider the Keynotes at, or as close to, the time of the Full Moon as possible and what it might mean as a Group. Each of the constellations also have at least one, but also as many as five, Ray determining energies by which they rule and of which they rule. **The main Ray energy of Pisces is Ray 1.** So, Pisces is considered to have a main energy of Will and Power or what is considered as Direction. It is a recommendation to consider the Pisces Keynotes as Ray 1 Keynotes. This is a direct correspondence to the information of our Color Consultations and the way this same Ray determining affects us individually and in our relationship to our group. So, our Color Consultation information can be reviewed and related to each of the Full Moon determining energies to determine the possible effects and opportunities each Full Moon offers each of us personally and in relationship with the group. This was explained and expanded upon from Esoteric Astrology (EA) in general in Addendum 1 from the past Aries Full Moon report (from April 2021). This year we are adding information on how each constellation works as a Triangle in what are called the Astrological or Galactic Triangles. Addendum 1 from the last Aries Full Moon report (from April 2023) is a general introduction about the triangles formed with the 12 Astrological signs and other more distant stars and galactic constellations, taken from EA. Addendum 1, below, relates specifically to Pisces and how it fits into the galactic triangles. Pisces is the twelfth sign of the Astrological year and the ninth of the nine distributing or ‘grounding’ energy and consciousness Full Moons of the year. It continues and helps to distribute or ‘ground’ the higher building cycle consciousness from the first three months of the astrological year of Aries, Taurus, and Gemini (April, May, and June). Addendum 3 from the last Aries Full Moon report (from April 2023) is some additional information on the full moons and possible meditation forms.

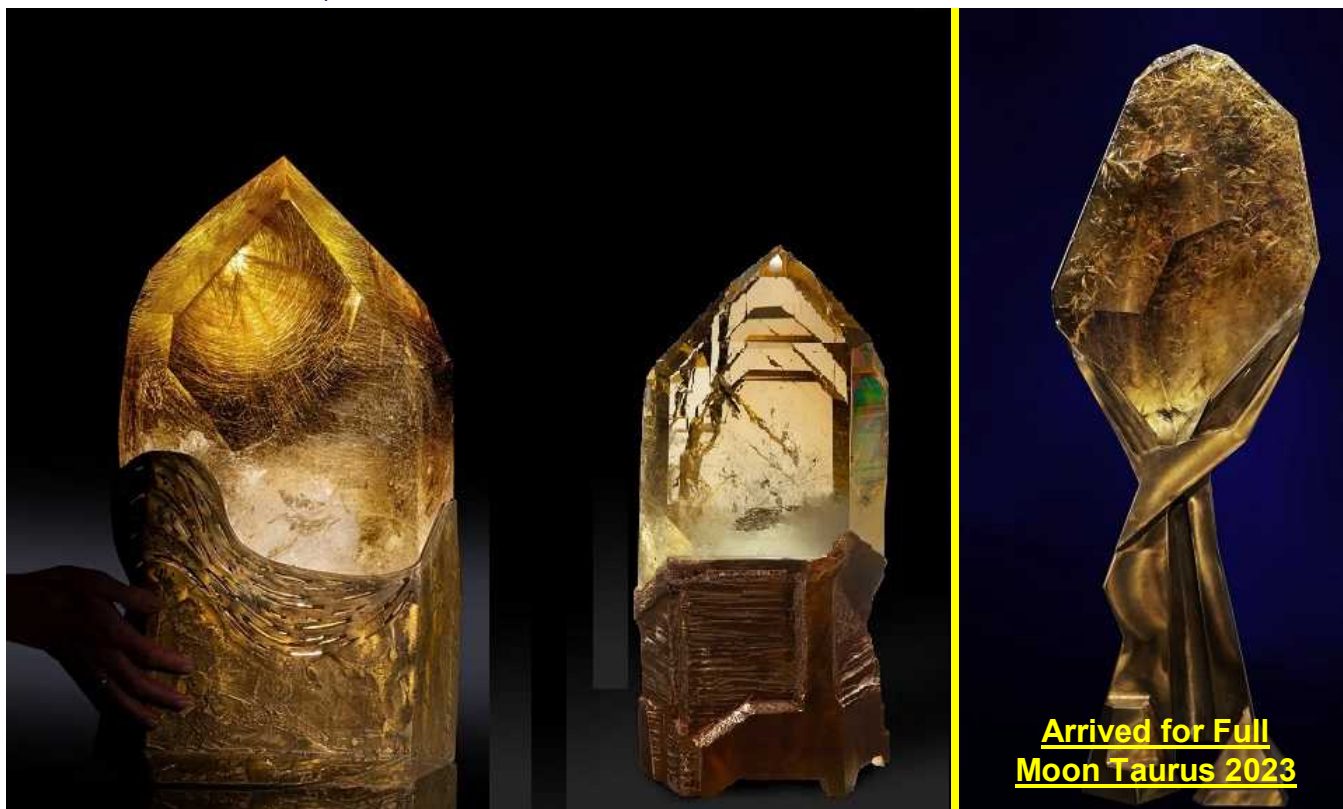
**A. Notes on this coming Full Moon of February/Pisces:**

- 1. Watch for any impressions** that may come to you before the Full Moon that may relate to the Ray 1 Keynotes and your specific Rays (from your Color Consultations), especially two days before the Full Moon, the day of the Full Moon and two days after the Full Moon. **If you want to share** any of your impressions with us please do. If you want any impressions shared with the group let us know and we will include them in the next month's meditation notes.
- 2. This is the twelfth of twelve different Full Moons of this Astrological year** and is the ninth of the nine different ‘Distributing Consciousness and Energy’ full moons of this astrological year. The energy which was built and gathered during the first three ‘Building’ Full Moons at the beginning of the astrological year (of April, May June), which is also called the ‘higher interlude’, will now be distributed over the next last nine Full Moons during the end of the astrological year, which is also called the ‘lower interlude’.
- 3. Addendum 1 from the Full Moon report of Aries (from April 2021) gives reference into more insight and inspiration for how to** view some of the expanded awareness of these monthly and yearly Full Moon cycles as we enter into the fifth Astrological Year of this group formation and the group's beginning functioning.
- 4. Addendum 1 below** relates specifically to Pisces and how it fits into the galactic triangles taken from EA.
- 5. The 2023-4 astrological year Annual Keynote is,** “LET THE GROUP AFFIRM THE WILL AS AN EXPRESSION OF THE LAW OF SACRIFICE.”

**B. Notes and Activities on or since the last Full Moon January/Aquarius:**

- 1. SuonAngelMiriam meditated at the time of the full moon and morning after the new moon, together with Safi (when she wanted). We had what we consider** very good meditations of positive grounding of this astrological year's continuing of the Lower Interlude. Since the first and highest of the Golden Light Presence crystals, ‘MilkyWay’ has arrived we are also tuning in to our respective Nirvana IV<sub>1&2</sub> occult group of crystals during our meditations and sensing an increase of energy due to these crystals.

2. **The Group Central Pillar Crystals** and the Esoteric and Occult crystal sets are now finalized along with any rearranging of the other crystals of the set for the 2025 impulse. Please let us know if you would like to explore any of these crystals or have any other input (see photo in previous FM report of Gemini of June 2022). **The three natural triple pointed crystal clusters** are always available for any group members who would like to meditate with them as another way to tune into group consciousness (see previous photo from March 2022 Pisces report). **Of three new 'Circumcentral' crystals two are still on a Lay-Away plan** to be here by the Summer Solstice of 2025 for the Hierarchical Group Impulse year of 2025 and the first has arrived before the recent past Full Moon of Taurus (see photo below or <http://www.sam2013.org/crystals.html> on our website for more information).



3. **Poppy research at BioFarmland** (BFL) at Virginia's suggestion. Seeds from this year's wild Poppy harvest were collected and planted in last June for growing during the 2024 season.
4. **Revised and renewed Hemp Museum suggestion** presented to Zoli, Virginia, and Leontina as a possible group project. There was similar input about local, village or household museums from the "Socio-Economico-Cultural Rebirth of the Romanian Village" conference in previous reports.
5. **Based on Leontina's previous intentions to establish an educational location near her home further discussions are going on about** a location, financing, possible links to other hemp projects and people. An initial estimate to get a small workshop space built on her land, for materials with mainly voluntary labor or construction, is 3,000 Euros. Due to challenges encountered with the political system at her home location, Leontina has decided to stop for the moment Sopronul Cultural and the building of the dome until the environment becomes more friendly to her projects. See previous update concerning Pamantul Stramosesc in the FM 2023 Sagittarius Report.
6. **SuonAngelMiriam have met personally with Georghe Piperea** and joined his class action law suit against the constitutionality of mandates which is moving forward as discussed in the Full Moon cover letter for Capricorn (2021). September 2022 hearing produced a change in how and who the law suit will be claiming as the defendants and the suit is continuing now at the appeal stage of litigation. The next court date has been set for late January 2024. Let us know if you have additional comments or questions.
7. **SuonAngelMiriam are continuing our interaction with Katharina documenting** how to manage and implement new and better ways of herb growing, drying, processing, soil regeneration, etc.
8. **SuonAngelMiriam are interacting with Virginia on her Bio-Resonance and Herbal and Aromatherapy courses, consultations** and treatments along with the consideration of the

SAM2013 Synthesise Tri-Level Color Set as liquids. Updated at meetings in September and October 2022, continuing with Virginia's Certified Herbal and Aroma Therapy courses #1 and now #2 which was in March 2023 and had another meeting at EsotericFest in June 2023 (also see Item #2 below in previous activities archive). The most recent meeting was held at EsotericFest in November 2023 with plans for the next meeting in Spring 2024 once work is completed on Color and Crystal Course educational manuals.

9. **SuonAngelMiriam are working with Remus and others on updating and expanding** one of his personal spirituality courses on Self Esteem as an Esoteric Group project. Anyone interested in knowing more or helping in this group project please let us know. Latest update was in October 2023.
10. **We participated in Remus' course about Stress Management** held through anatecor which is related to Virginia's fitotherapy course. We also attended the prayer zoom meeting he and Anatecor organized for the professor Mircea Stefea who passed recently.
11. **SuonAngelMiriam are working with Aurellian on how some of the concepts of his book and course** on "The Numerology of the Soul" might relate and correspond to the SAM2013 Synthesis Tri-Level Color System numerology. Both Aurellian and Suon have had direct contact with Yogi Bahjan who taught the numerology of the soul concepts.
12. **SuonAngelMiriam are working with Mircea on ways of distributing SAMfume** and other products and working more closely together on the other projects listed above. Recent meetings held in September Singfest and at the Singureni Christmas Fair 2022 and then in June 2023 also.

### **C. Previous Activities Archive:**

1. **Hemp** for cooperative research at BioFarmland (BFL) on hold after 3 years of testing.
2. **2023 Timisoara Cultural Capital office cooperative event named 'SAMatate'**. See FM Sagittarius 2023 for final update on this report.

### **D. General Notes and considerations about the group, cycles, meditation and information flow:**

1. **We are happy to get to know each other better**, or other ways that we may cooperate either personally, or as organizations. Please let us know if you would like any other meetings or if you have any other comments or questions.
2. **2023 continues the new seven year cycle started in 2020**. The final major group 'impact' has been made in 2019 prior to the next 100 year 'impulse' which happens during 2025.
3. **It might be considered that these Group Meditations seek** to make use of the spiritual opportunities that the cycles of full moons, solstices and equinoxes, Group Festival Weeks and Centennial Impulse years provide. The unique energies associated with each constellation, season and longer cycles are directed into the consciousness as trans-formative qualities that can lift and expand our hearts and minds.
4. **It might be considered that Group Living tends to the fulfillment of free will in service** and, as this is gradually understood, coming together to co-operate on issues for the benefit of the whole without intentions to dominate, interfere or impose on others. The vision is there, the future is assured, but the key to its successful implementation is that co-operation has to be based on intentions that are based on the good of the whole rather than a focus on self-interest.
5. **In all meditation it is of value for the student to remember that**, from the standpoint of permanent benefit, it is easier to meditate effectively during the period from the new moon to the full moon, than from the full moon to the new moon. The first half of the lunar cycle is one of intensification, absorption and accretion; the second half is one of assimilation and distribution. More real progress over a long period can be made by observing this cyclic law.
6. **Wisely utilizing newly acquired energies keeps inflowing and out flowing channels open** and prevents Sycal (psychical), Astral (emotional), Mental (intellectual) congestions, which may otherwise be experienced, with their accompanying physical consequences.
7. **The following regular monthly cycle is for the group information flow:**
  - a. Full Moon (five days): Two days before, the day of (meditation), and two days after Full Moon for getting impressions.
  - b. The week after the 5 days of the Full Moon: For letting us know or sharing of any impressions during the preceding 5 days. Plus us transcribing our own impressions.
  - c. Second week after Full Moon for 'Anchoring' or 'Grounding' impressions through gathering other information or following up on activities based on the impressions. Possible New Moon meditation by those who want and ending that Full Moon Cycle.
  - d. Third week after Full Moon (just after the New Moon): Starting to build up to the next Full Moon having any questions to impressions shared and answered and any activities based on impressions started or completed.
  - e. Fourth week after the Full Moon (just before the next Full Moon): Coming out with the Keynote and information and timing of the next Full Moon, including the shared impressions or activity from the last Full Moon.

**Addendum 1: Pisces, The Fishes, constellation hypothesizes and considerations on the Galactic Triangles from EA**

(Free online at [https://www.lucistrust.org/online\\_books/esoteric\\_astrology\\_obeoks](https://www.lucistrust.org/online_books/esoteric_astrology_obeoks)):

**PISCES, THE FISHES:**

This study will fall into three parts as earlier indicated:

1. Triangles of Energy—constellations.
2. Triangles of Force—planetary triplicities.
3. The Triangles and the Centres—planetary and human.

**First Triangle:**

The Pleiades . . . Cancer . . . Venus.  
Humanity.

**Second Triangle:**

The Great Bear . . . Aries . . . Pluto.  
Shamballa.

**Third Triangle:**

Sirius . . . Leo . . . Jupiter.  
Hierarchy.

Next I will deal with an analysis of three groups of triangles which are of major importance to humanity at this time and which follow upon information earlier given. These groups of triangles emanate energies which reach through space to the individual man and, therefore, cannot be ignored. They are:

The Great Bear	The Pleiades	Sirius
Leo	Transmit energy via Capricorn	Pisces
Saturn	These transmit energy via Mercury	Uranus
Planetary head centre	Reaching the following centres Planetary ajna centre	Planetary heart
Disciple's head centre	From thence to Disciple's ajna centre	Disciple's heart centre
The base of the spine	and eventually control The throat centre	the solar plexus

I will also take up with you some of the points and indications which are hinted at in Tabulation IX, relating to the twelve signs of the zodiac... Certain major streams of conditioning energies will be seen related to each other and to our Earth and these fall into two groups:

1. The ray energies which we are told emanate from the Great Bear in seven great out-raying streams of force.
2. The inherent energies of the twelve constellations which blend with the ray energies, producing the essential dualism of manifested life, and incidentally are responsible for the peculiar difficulties confronting humanity on the are of evolutionary experience upon our planet.

Again I would repeat that what I shall have to say will be related to present world conditions, to humanity and also—for practical teaching and application—to the life of the individual disciple. Necessarily, these energies have a cosmic, systemic and planetary significance but these no disciple can as yet grasp;

personality has to be transcended before even the earlier stages of the understanding of these mysteries become possible, and this transcendence is something you have not yet accomplished but which some day inevitably you will.

Once man is impersonal and free from the reactions of the lower self, and his consciousness is illumined by the clear light of the intuition, then his "window of vision" becomes clarified and his sight into reality is unimpeded. Obstructions (always erected by humanity itself) are removed and he sees all life and form in their true relation and can comprehend, and even occultly "see," the "passage of the energies."

The relationship of certain rays and cosmic triangles may become clearer to you if the following tabulation is studied with care.

NOTE: The seven stars of the Great Bear are the originating sources of the seven rays of our solar system. The seven Rishis (as They are called) of the Great Bear express Themselves through the medium of the seven planetary Logoi Who are Their Representatives and to Whom They stand in the relation of cosmic Prototype. The seven planetary Gods manifest through the medium of the seven sacred planets. Each of these seven rays is transmitted into our solar system through the medium of three constellations and their ruling planets...

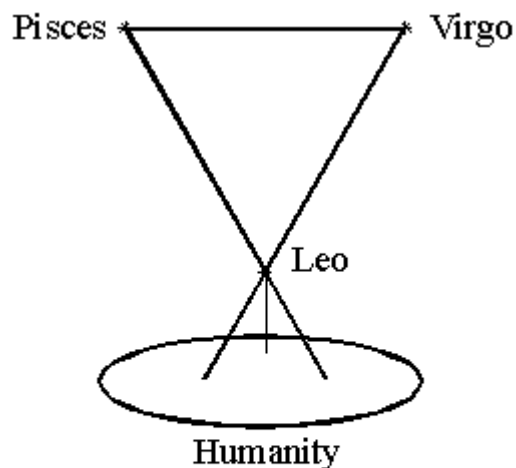
**TABULATION IX - A COSMIC SERIES OF INTERRELATED TRIANGLES**  
(The Rays, Constellations and Planets)

**Ray (only Rays II and IV shown because they have Pisces in the triangles)**

	<u>Constellations</u>	<u>Planets</u>	
		<u>Orthodox</u>	<u>Esoteric</u>
II. Love-Wisdom	Gemini Virgo <b>Pisces</b>	Mercury Mercury <b>Jupiter</b>	Venus The Moon <b>Pluto</b>
VI. Idealism. Devotion	Virgo Sagittarius <b>Pisces</b>	Mercury Jupiter <b>Jupiter</b>	The Moon The Earth <b>Pluto</b>

All these appearances, expressions of qualities and material evidences of life are the symbols or outer and visible signs of inner and spiritual realities or of Life, whatever you may mean by that term...

...These three constellations are Leo—Virgo—Pisces. They are spoken of esoterically as "the Producers of that which knows, the Informers of that which is awakened and the Constructors of the modes of fusing Wisdom. They produce a unity; They shatter that which They have produced only again to produce it in greater beauty and in wider fullness." These words are clear. This triangle is, at this [Page 470] time, an inverted one with the Leo energies in the closest contact with our planetary life. The following triangle will show this more clearly.



These three are connected definitely and increasingly with the unfoldment of human consciousness in three main aspects...

...Again and repeatedly, students must remind themselves that we are considering the impact of energy upon energy units (all qualified and producing appearance) and with the response of those energy units to the streams of force which reach them from "the furthest centre." It is in the development of response to distant points of contact and emanating sources of energy that the needed sensitivity is produced. Sensitivity, generally speaking, is of a threefold nature:

1. Sensitivity to that which is found within oneself. This, when the consciousness is adequately self-sufficient, opens a door for the entrance of energies coming from the "middle centre." I speak in symbols and for those whose knowledge of cosmic location and of points in time and space will enable them to comprehend; to the uninitiate, I simply say, "Respond to soul impact."
2. Sensitivity to that which emanates from the "centres left behind" or to those streams of vital energy which lie active and focussed below the threshold of the waking consciousness. They stir the threads of memory; they draw backward the glances (and there lies magic in the energy of the eye) of the onward moving Point, the Pilgrim on his way; they condition through ancient habit the responsiveness of the units in the form.
3. A developed sensitivity which emerges from the "furthest centre" at first unconsciously employed and later consciously directed and attuned - a fully magnetic and attractive sensitivity. Forget not that true interplay imposes the condition of reciprocity and that the two points or termini of a line eventually vibrate in unison.

... I wonder if you can grasp at least partially and symbolically the fact that these triangles must not be thought of as placed, static and eternally the same, or even as three dimensional. They must be regarded as in rapid movement, revolving eternally in space and ceaselessly moving onward and as of fourth and fifth dimensional extension. There is no way of depicting them or of bringing them visually to your attention, for only the inner eye of vision can imagine their progression, position or appearance...

...Therefore the entire cosmic web and solar system is an intricate, constantly moving, interwoven series of triangles wherein each point of a triangle emanates three lines or streams of energy (nine in all); it is likewise responsive to and receptive of the energies—likewise triple in nature—which lie within its periphery or sphere of influence and vibratory activity...

...Earlier in this treatise, I gave you the relation between the rays and the constellations and stated that each of the seven rays expressed itself through the medium of three constellations or through a triangle of energies. This relation is the basis of the entire Science of Triangles and, therefore, of astrology itself; it is also related to the rays, the constellations, their ruling planets and our Earth in a great synthesis of energies; it relates our solar system to the larger whole and our tiny non-sacred planet to the solar system.

Let me repeat that statement and thus indicate to you some vital facts anent this world of interweaving energies. The Rays pour through, are expressed by and are transmitted through the following constellations:

Ray I	Aries	Leo	Capricorn
<b>Ray II</b>	<b>Gemini</b>	<b>Virgo</b>	<b>Pisces</b>
Ray III	Cancer	Libra	Capricorn
Ray IV	Taurus	Scorpio	Sagittarius
Ray V	Leo	Sagittarius	Aquarius
<b>Ray VI</b>	<b>Virgo</b>	<b>Sagittarius</b>	<b>Pisces</b>
Ray VII	Aries	Cancer	Capricorn

Certain interesting facts emerge if this tabulation is carefully studied. Let me list some of them for you, leaving you to apply the information as may seem best to you.

...4. c. Gemini is only found in the triangle of Ray II and at this time, Virgo and Pisces are carrying the major task of transmitting second ray energy. Today the world is focussed (spiritually or materially) and the fluctuations of the pairs of opposites are much lessened temporarily. Gemini, therefore, is the inactive point of the triangle, though still potent from the esoteric angle of the individual disciple or initiate...

...We have reached a point in our consideration of the Science of Triangles wherein we can pause for a minute to consider our next approach to this subject and choose the theme by means of which we can throw more light upon it. It should by now be obvious to you that this Science of Triangles concerns the beneficence of Deity and that, through the intricate combinations of cosmic, systemic and planetary triangles, the purposes of God are working out. Those purposes are motivated by love. It is through these relationships that love expresses itself, brings about the needed changes for that expression, and human consciousness is brought into the required state of inclusiveness...

...I would like here to call your attention to an interesting point which has a definite bearing upon the power of the individual to grasp the new astrology and to comprehend the Science of Triangles. The astrological symbols for Virgo and Scorpio are triple in nature—the only two which are. When the disciple grasps the meaning behind this triplicity, he will be ready to grasp the significance of this abstruse science and to work with the new astrology. Virgo and Scorpio are two signs connected with the growth of the Christ consciousness; they mark critical points in the soul's experience—points of integration wherein the soul is consciously at-one-ing itself with the form and at the same time with spirit. I said the soul's experience, not the experience of the man upon the physical plane. When the experience undergone in Virgo is consummated in Pisces and the tests of Scorpio have led to illumination in Taurus, then the effect of these four energies (Virgo, Pisces, Scorpio, Taurus) will be to make man the true triangle, expressing the three divine aspects or energies as they come from the three major conditioning constellations: the Great Bear, the Pleiades and Sirius.

I could fill many volumes with the indications of the various triangles as they are discovered to be related in time and space. Under the will of Deity and the unalterable energy at the heart of the manifested zodiac, they produce the changes in consciousness which make man divine at the close of the world cycle. But the theme is too vast and all I seek to do is to point the way towards a new science and towards those esoteric combinations of energies which will, when recognised, enable humanity to make more rapid progress, fuse and blend the energies of the three planetary centres and transform our Earth (through the agency of human thought, reacting to zodiacal influences) into a sacred planet. It is, therefore, the influence and combination of energies as they affect the aspirants and disciples of the world which must suffice for any increased understanding...

...It is through the squares or the quaternial relation that the form aspect is brought into relation and adequacy to the will of Deity, expressing itself through the gradually unfolding consciousness aspect. I am explaining this situation in these simple words because it must be apparent to you that only as the soul illumines the mind can the significance of the teaching be grasped. It is only when the stage of initiation is reached that the true meaning will emerge. In the meantime, I have sought to awaken in your minds a reaction to the abstract truth lying behind the two following statements:

1. The Science of Triangles is related to the total expression of the divine triplicity of manifestation: will, love and intelligence or life, consciousness and form. Until, therefore, the disciple can express in himself the

integrated resemblance to these three aspects, he will not be able to grasp the meaning of this subjective astrological science.

2. On our planet, the Science of Triangles is related to the three major aspects, as they express themselves through Shamballa, the Hierarchy and Humanity. Again, therefore, we come up against the need for the approach of the integrated human being to this science because only the man who is responsive to these three focal points of energy can understand the interplay. Only, in fact, can the man apprehend the underlying truth whose two head centres and his heart centre form a triangle of flowing energies...

...I would remind you of what I said earlier in the treatise that the Science of Triangles is related to spirit and synthesis. I would remind you also that what I have written in this astrological section of the Treatise on the Seven Rays is intended for the instruction of disciples at the close of this century (SAM – this means now)...

**Conclusion (at this point):**

May we consider together entering into that higher state of (group/soul) 'bewilderment', especially at this cycle of Aquarian consciousness, yet strength and unity from our lower state of personal certitude and isolation to possibly obtain a universal group consciousness.