

**Full Moon of Sagittarius, ninth Full Moon of this Astrological Year, on Monday, November 27, 2023 at 12:16:06 in Romania:**

The main Keynote or phrase to consider for all Sagittarius Full Moons (each year): **“I see the goal. I reach that goal and then I see another.”** The Sagittarius Full Moon Keynote of Light each year is: **“A beam of directed, focused Light. (Hint: In this the point of light becomes the beam, revealing a greater light ahead and illumining the way to the centre of the light.)”** Consider the Keynotes at, or as close to, the time of the Full Moon as possible and what it might mean as a Group. Each of the constellations also have at least one, but also as many as five, Ray determining energies by which they rule and of which they rule. **The main Ray energy of Sagittarius is Ray 6.** So, Sagittarius has a main energy of Devotion. It is a recommendation to consider the Sagittarius Keynotes as Ray 6 Keynotes. This is a direct correspondence to the information of our Color Consultations and the way this same Ray determining affects us individually and in our relationship to our group. So, our Color Consultation information can be reviewed and related to each of the Full Moon determining energies to determine the possible effects and opportunities each Full Moon offers each of us personally and in relationship with the group. This was explained and expanded upon from Esoteric Astrology (EA) in general in Addendum 1 from the past Aries Full Moon report (from April 2021). This year we are adding information on how each constellation works as a Triangle in what are called the Astrological or Galactic Triangles. Addendum 1 from the last Aries Full Moon report (from April 2023) is a general introduction about the triangles formed with the 12 Astrological signs and other more distant stars and galactic constellations, taken from EA. Addendum 1, below, relates specifically to Sagittarius and how it fits into the galactic triangles. Sagittarius is the ninth sign of the Astrological year and the sixth of the nine distributing or ‘grounding’ energy and consciousness Full Moons of the year. It continues and helps to distribute or ‘ground’ the higher building cycle consciousness from the first three months of the astrological year of Aries, Taurus, and Gemini (April, May, and June). Addendum 3 from the last Aries Full Moon report (from April 2023) is some additional information on the full moons and possible meditation forms.

**A. Notes on this coming Full Moon of November/Sagittarius:**

- 1. Watch for any impressions** that may come to you before the Full Moon that may relate to the Ray 6 Keynotes and your specific Rays (from your Color Consultations), especially two days before the Full Moon, the day of the Full Moon and two days after the Full Moon. **If you want to share** any of your impressions with us please do. If you want any impressions shared with the group let us know and we will include them in the next month's meditation notes.
- 2. This is the ninth of twelve Full Moons of this Astrological year** and is the sixth of the nine different ‘Distributing Consciousness and Energy’ full moons of this astrological year. The energy which was built and gathered during the first three ‘Building’ Full Moons at the beginning of the astrological year (of April, May June), which is also called the ‘higher interlude’, will now be distributed over the next last nine Full Moons during the end of the astrological year, which is also called the ‘lower interlude’.
- 3. Addendum 1 from the Full Moon report of Aries (from April 2021) gives reference into more insight and inspiration for how to** view some of the expanded awareness of these monthly and yearly Full Moon cycles as we enter into the fifth Astrological Year of this group formation and the group’s beginning functioning.
- 4. Addendum 1 below** relates specifically to Sagittarius and how it fits into the galactic triangles taken from EA.
- 5. The 2023-4 astrological year Annual Keynote is,** “LET THE GROUP AFFIRM THE WILL AS AN EXPRESSION OF THE LAW OF SACRIFICE.”

**B. Notes and Activities on or since the last Full Moon October/Scorpio:**

- 1. SuonAngelMiriam meditated at the time of the new and full moon, together with Safi (when she wanted). We had what we consider** very good meditations of positive grounding of this astrological year’s continuing of the Lower Interlude. Angel had significant impressions of how color relates to various aspects of life and how to write and educate about it.

Since the first and highest of the Golden Light Presence crystals, ‘MilkyWay’ has arrived we are also tuning in to our respective Nirvana IV<sub>1&2</sub> occult group of crystals during our meditations and sensing an increase of energy due to these crystals.

2. **SuonAngel are talking with 2023 Timisoara Cultural Capital office about a cooperative event possibly named 'SAMatate'** between Favisan, BFL/SolarCity (The Natural Way Assoc. - TNWA), the Hemp Museum, SAM2013 and possibly Anatacor and Aurellian's or other groups for the Cultural Capital celebrations rescheduled to 2023. See the previous meditation report for April for past historical information about this event.

As a final report (then this activity will be moved to the Previous Activities Archive below): The La Pas festival events have ended for this year (series of events org by Mihaela Vetan). They say the festival was a succes and it inspired more schools to come into the program of education about fair trade, recycling and support of the local community. They are continuing regularly with the schools educayonal program on the subjceta mentioned above.

They have managed to support create a new beer brand from a small brewery that somehow connects to a bakery thus saving it from closing so now they have branded the bread and beer La Pas.

They hope they will be able to continue the La Pas festival/movement about the connection between culture and food even if the TM2023 program has finished for them.

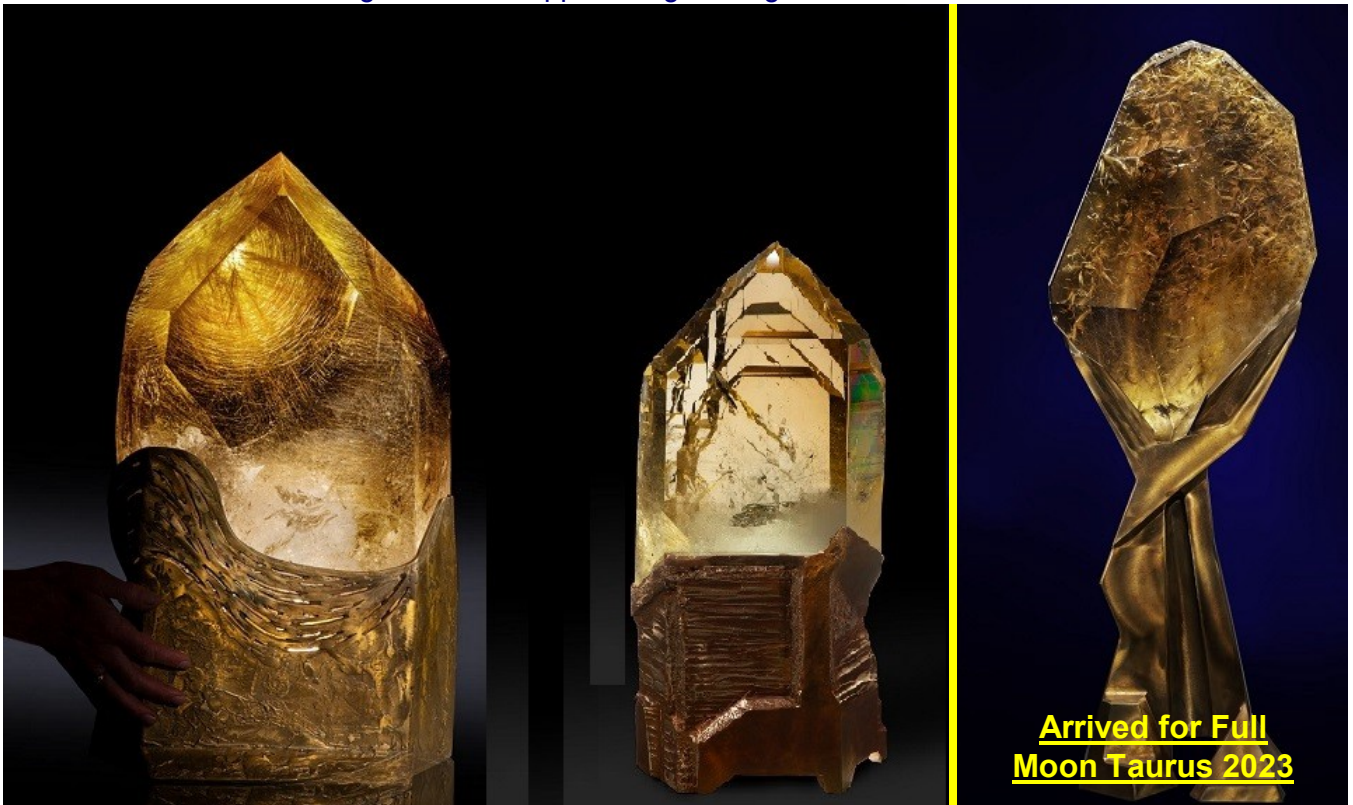
Our comments on what we learned from the project: The focus on all events was put on the "cultural" and "heritage" aspects of the event/festival with (obvious) no interest of going deeper into the "cultural-health-spiritual" aspect of it. Even if the festival is supporting local producers, from their (La Pas and Mihaela Vetan's) FB page, it seems that the focus is put on the comercial turistical aspects of it, not the deeper meaning why the support of the small local producers is needed and its significane on the whole society.

3. **The Group Central Pillar Crystals** and the Esoteric and Occult crystal sets are now finalized along with any rearranging of the other crystals of the set for the 2025 impulse. Please let us know if you would like to explore any of these crystals or have any other input (see photo in previous FM report of Gemini of June 2022). **The three natural triple pointed crystal clusters** are always available for any group members who would like to meditate with them as another way to tune into group consciousness (see previous photo from March 2022 Pisces report). **Of three new 'Circumcentral' crystals two are still on a Lay-Away plan** to be here by the Summer Solstice of 2025 for the Hierarchical Group Impulse year of 2025 and the first has arrived before the recent past Full Moon of Taurus (see photo below or <http://www.sam2013.org/crystals.html> on our website for more information).
4. **Poppy research at BioFarmland** (BFL) at Virginia's suggestion. Seeds from this year's wild Poppy harvest were collected and planted in last June for growing during the 2024 season.
5. **Revised and renewed Hemp Museum suggestion** presented to Zoli, Virginia, and Leontina as a possible group project. There was similar input about local, village or household museums from the "Socio-Economico-Cultural Rebirth of the Romanian Village" conference in Item 2 above.
6. **Based on Leontina's previous intentions to establish an educational location near her home further discussions are going on about** a location, financing, possible links to other hemp projects and people. An initial estimate to get a small workshop space built on her land, for materials with mainly voluntary labor or construction, is 3,000 Euros.

Leontina has created the Sopronul Cultural ( The Cultural Shack) which is a roof on the spot where people camped last time and where she is holding events together with Pamantul Stramosesc. She has organized there markets, courses for children, seeds exchanges, concerts, etc. The idea of the cultural space for the moment has moved there and she is focused on Pamantul Stramosesc where she is a founder member together with Calin Georgescu. There was an event now with the accasion of 1<sup>st</sup> of May, held at the Sopronul Cultural together with Pamantul Stramosesc which consisted of a Plama and Plasmatic water making and another of hemp soap making.

Following the event all present together with Leontina discussed about the possibility of building a geodesic dome structure, 9 meters in diameter and 4.5 meters high, as a protected space for the Sopronul Cultural workshops, courses etc. For the moment the period agreed upon for the beginning of the structure is the end of July, exact dates following to be settled together with Pamantul Stramosesc. Anyone who is interested in helping the bulding of this structure please contact us or Leontina directly. Due to challenges encountered with the political system at her home location, Leontina has decided to stop for the moment Sopronul Cultural and the building of the dome until the evironment becomes more friendly to her projects.

- 7. SuonAngelMiriam have met personally with Georghe Piperea** and joined his class action law suit against the constitutionality of mandates which is moving forward as discussed in the Full Moon cover letter for Capricorn (2021). September 2022 hearing produced a change in how and who the law suit will be claiming as the defendents and is continuing. Recent meetings at Singfest in September and December 2022. Let us know if you have additional comments or questions. Next meetings scheduled for June 30 to July 2, 2023 at Singfest 2023 were not able to be attended but the law suit is continuing now at the appeal stage of litigation.



- 8. SuonAngelMiriam are continuing our interaction with Katharina documenting** how to manage and implement new and better ways of herb growing, drying, processing, soil regeneration, etc.
- 9. SuonAngelMiriam are interacting with Virginia on her Bio-Resonance and Herbal and Aromatherapy courses, consultations** and treatments along with the consideration of the SAM2013 Synthesise Tri-Level Color Set as liquids. Updated at meetings in September and October 2022, continuing with Virginia's Certified Herbal and Aroma Therapy courses #1 and now #2 which was in March 2023 and had another meeting at EsotericFest in June 2023 (also see Item #2 above). The most recent meeting was held at EsotericFest in November 2023 with plans for the next meeting in Spring once work is completed on Color and Crystal Course educational manuals.
- 10. SuonAngelMiriam are working with Remus and others on updating and expanding** one of his personal spirituality courses on Self Esteem as an Esoteric Group project. Anyone interested in knowing more or helping in this group project please let us know. Latest update was at EsotericFest in June 23 with another meeting being planned for this autumn.
- 11. We participated in Remus' course about Stress Management** held through anatecor which is related to Virginia's fitotherapy course. We also attended the prayer zoom meeting he and Anatecor organized for the professor Mircea Stefea who passed recently.

**12. SuonAngelMiriam are working with Aurellian on how some of the concepts of his book and course on “The Numerology of the Soul” might relate and correspond to the SAM2013 Synthesis Tri-Level Color System numerology. Both Aurellian and Suon have had direct contact with Yogi Bahjan who taught the numerology of the soul concepts.**

**13. SuonAngelMiriam are working with Mircea on ways of distributing SAMfume and other products and working more closely together on the other projects listed above. Recent meetings held in September Singfest and at the Singureni Christmas Fair 2022 and then in June 2023 also.**

### **C. Previous Activities Archive:**

**1. Hemp for cooperative research at BioFarmland (BFL) on hold after 3 years of testing.**

### **D. General Notes and considerations about the group, cycles, meditation and information flow:**

**1. We are happy to get to know each other better**, or other ways that we may cooperate either personally, or as organizations. Please let us know if you would like any other meetings or if you have any other comments or questions.

**2. 2023 continues the new seven year cycle started in 2020.** The final major group ‘impact’ has been made in 2019 prior to the next 100 year ‘impulse’ which happens during 2025.

**3. It might be considered that these Group Meditations seek** to make use of the spiritual opportunities that the cycles of full moons, solstices and equinoxes, Group Festival Weeks and Centennial Impulse years provide. The unique energies associated with each constellation, season and longer cycles are directed into the consciousness as trans-formative qualities that can lift and expand our hearts and minds.

**4. It might be considered that Group Living tends to the fulfillment of free will in service** and, as this is gradually understood, coming together to co-operate on issues for the benefit of the whole without intentions to dominate, interfere or impose on others. The vision is there, the future is assured, but the key to its successful implementation is that co-operation has to be based on intentions that are based on the good of the whole rather than a focus on self-interest.

**5. In all meditation it is of value for the student to remember that,** from the standpoint of permanent benefit, it is easier to meditate effectively during the period from the new moon to the full moon, than from the full moon to the new moon. The first half of the lunar cycle is one of intensification, absorption and accretion; the second half is one of assimilation and distribution. More real progress over a long period can be made by observing this cyclic law.

**6. Wisely utilizing newly acquired energies keeps inflowing and out flowing channels open** and prevents Sycal (psychical), Astral (emotional), Mental (intellectual) congestions, which may otherwise be experienced, with their accompanying physical consequences.

#### **7. The following regular monthly cycle is for the group information flow:**

- a. Full Moon (five days): Two days before, the day of (meditation), and two days after Full Moon for getting impressions.
- b. The week after the 5 days of the Full Moon: For letting us know or sharing of any impressions during the preceding 5 days. Plus us transcribing our own impressions.
- c. Second week after Full Moon for ‘Anchoring’ or ‘Grounding’ impressions through gathering other information or following up on activities based on the impressions. Possible New Moon meditation by those who want and ending that Full Moon Cycle.
- d. Third week after Full Moon (just after the New Moon): Starting to build up to the next Full Moon having any questions to impressions shared and answered and any activities based on impressions started or completed.
- e. Fourth week after the Full Moon (just before the next Full Moon): Coming out with the Keynote and information and timing of the next Full Moon, including the shared impressions or activity from the last Full Moon.

### **Addendum 1: Sagittarius, The Archer, constellation hypothesizes and considerations on the Galactic Triangles from EA:**

#### **SAGITTARIUS, THE ARCHER:**

This study will fall into three parts as earlier indicated:

1. Triangles of Energy—constellations.
2. Triangles of Force—planetary triplicities.
3. The Triangles and the Centres—planetary and human.

#### **First Triangle:**

The Pleiades . . . Cancer . . . Venus.  
Humanity.



## Second Triangle:

The Great Bear . . . Aries . . . Pluto.  
Shamballa.

## Third Triangle:

Sirius . . . Leo . . . Jupiter.  
Hierarchy.

## **TABULATION IX - A COSMIC SERIES OF INTERRELATED TRIANGLES**

(The Rays, Constellations and Planets)

### Ray (only Rays IV, V, VI shown because they have Sagittarius in the triangles)

	<u>Constellations</u>	<u>Planets</u>	
		<u>Orthodox</u>	<u>Esoteric</u>
IV. Harmony-Conflict	Taurus Scorpio <b>Sagittarius</b>	Venus Mars <b>Jupiter</b>	Vulcan Mars <b>The Earth</b>
V. Concrete Science	Leo <b>Sagittarius</b> Aquarius	The Sun <b>Jupiter</b> Uranus	The Sun <b>The Earth</b> Jupiter
VI. Idealism. Devotion	Virgo <b>Sagittarius</b> Pisces	Mercury <b>Jupiter</b> Jupiter	The Moon <b>The Earth</b> Pluto

All these appearances, expressions of qualities and material evidences of life are the symbols or outer and visible signs of inner and spiritual realities or of Life, whatever you may mean by that term...

...Again and repeatedly, students must remind themselves that we are considering the impact of energy upon energy units (all qualified and producing appearance) and with the response of those energy units to the streams of force which reach them from "the furthest centre." It is in the development of response to distant points of contact and emanating sources of energy that the needed sensitivity is produced. Sensitivity, generally speaking, is of a threefold nature:

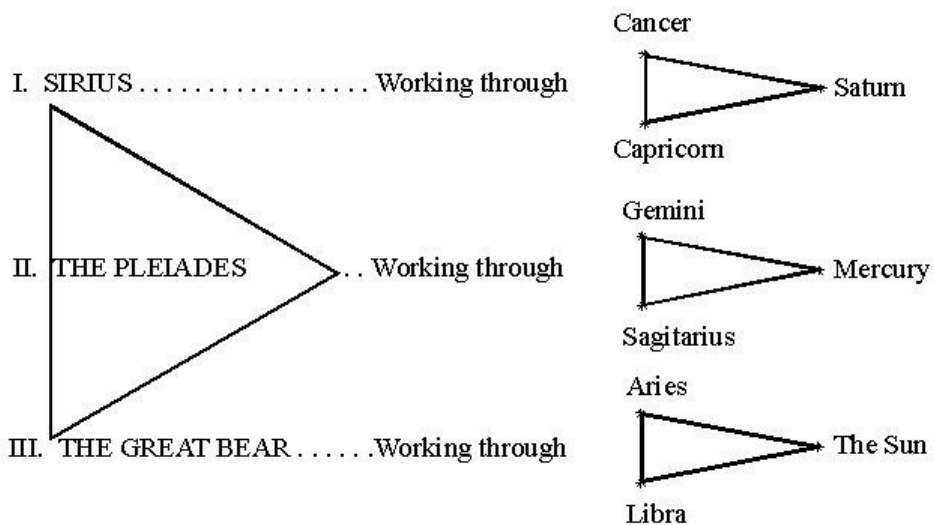
1. Sensitivity to that which is found within oneself. This, when the consciousness is adequately self-sufficient, opens a door for the entrance of energies coming from the "middle centre." I speak in symbols and for those whose knowledge of cosmic location and of points in time and space will enable them to comprehend; to the uninitiate, I simply say, "Respond to soul impact."
2. Sensitivity to that which emanates from the "centres left behind" or to those streams of vital energy which lie active and focussed below the threshold of the waking consciousness. They stir the threads of memory; they draw backward the glances (and there lies magic in the energy of the eye) of the onward moving Point, the Pilgrim on his way; they condition through ancient habit the responsiveness of the units in the form.
3. A developed sensitivity which emerges from the "furthest centre" at first unconsciously employed and later consciously directed and attuned - a fully magnetic and attractive sensitivity. Forget not that true interplay imposes the condition of reciprocity and that the two points or termini of a line eventually vibrate in unison.

... We might consequently state that the forces of:

2. Gemini—Sagittarius—Mercury (which are an expression of the Pleiades) enable the Probationary Disciple to pass on to the Path of Accepted Discipleship. He is then becoming increasingly intuitive and entirely one-pointed whilst the nature of the pairs of opposites is clearer to him. The relation of the Mother-aspect (as embodied in the Pleiades) and of the Christ-child, hidden within the form of the personality, is

realised and the inner, spiritual man institutes the process of initial identification with the spiritual entity on its own plane; the little self begins to react consciously and with increasing frequency to the higher Self. The man "presses forward on that Path wherein he learns to see..."

... Five constellations are not so intimately concerned with the mass human crises but are more definitely and specifically related to the unfoldment of the individual disciple. These are: Sagittarius, Libra, Taurus, Pisces and Aquarius...



... For the remainder of this section on the Science of Triangles, I shall take up those triangles which are at this time and in this world cycle producing effects in the human consciousness. These effects are of two kinds: those which are general, not so easily discernible and which affect the masses of men, and those which are more specific in their results, more tangibly effective and which serve to condition the consciousness of the world aspirants, disciples and initiates. Today, this dual movement of energies is going on, producing a slow, steady awakening of the mass consciousness so that individual self-consciousness on a large scale will be the result and the more rapid stimulation of the already awakened consciousness of advanced humanity so that initiation will be achieved...

The effectiveness of this dual process can be seen if it is realised that three great signs—Leo, Sagittarius, Aquarius—are today exceedingly active and working in close relation with each other. They are the three signs whose energies are affecting humanity as a whole—as a kingdom in nature. Leo: the sign of the self-conscious individual is potent in its mass effect and today, through the stress of circumstance and the dire results of certain events, thousands of men and women are stepping out of the ranks of the mass-conscious herd and out of the deep sleep of irresponsibility and becoming aware of themselves as detached, functioning entities. Sagittarius is powerfully affecting the world aspirants and leading them towards those attitudes of mind which will produce an unswerving allegiance to the spiritual values and an unalterable adherence to the good of humanity. Aquarius is—with equal potency—affecting the world disciples and initiates, leading them to world service on a large scale, producing group activity and that living usefulness which is the hall-mark of the pledged disciple. The influence of these three constellations is felt through their esoteric planets, and the mass movement in consciousness (for which Leo is responsible) can be noted as possible even by the novice when he realises that the ruling planets in Leo are, from all three angles—exoteric, esoteric and hierarchical—the Sun. The mass movement towards individual self-consciousness is today enormously intensified as is the paralleling individual movement towards initiation...

...Earlier in this treatise, I gave you the relation between the rays and the constellations and stated that each of the seven rays expressed itself through the medium of three constellations or through a triangle of energies. This relation is the basis of the entire Science of Triangles and, therefore, of astrology itself; it is also related to the rays, the constellations, their ruling planets and our Earth in a great synthesis of energies; it relates our solar system to the larger whole and our tiny non-sacred planet to the solar system. Let me repeat that statement and thus indicate to you some vital facts anent this world of interweaving energies. The Rays pour through, are expressed by and are transmitted through the following constellations:

Ray I	Aries	Leo	Capricorn
Ray II	Gemini	Virgo	Pisces
Ray III	Cancer	Libra	Capricorn
Ray IV	Taurus	Scorpio	Sagittarius
Ray V	Leo	Sagittarius	Aquarius
Ray VI	Virgo	Sagittarius	Pisces
Ray VII	Aries	Cancer	Capricorn

Certain interesting facts emerge if this tabulation is carefully studied. Let me list some of them for you, leaving you to apply the information as may seem best to you.

1. This interrelation is effective in this world cycle and will remain so until the end of the Aquarian Age. By this I mean, that these seven triangles of energy are today pouring their force through one of the constellations in each triangle.

2. Today, the following points of the triangles of energy or the following constellations in the triangles are the controlling factors:

Ray I.—Aries: This constellation, as might be expected, is the source of the initial energy, producing the New Age.

Ray II.—Virgo: This constellation produces the increased activity of the Christ principle in the heart of humanity.

Ray III.—Cancer: The mass movement towards liberty, release and light, so dominant today, is caused by the energy of this sign.

Ray IV.—Scorpio: Through this constellation comes the testing of humanity, the world disciple.

Ray V.—Leo: This sign produces the growth of individualism and of self-consciousness, so prevalent today on a world scale.

Ray VI.—Sagittarius: This sign produces the focussed one-pointed effort of the world aspirant.

Ray VII.—Capricorn: This Capricornian energy produces initiation and the overcoming of materialism.

3. It will be noted in this tabulation that several of the constellations find themselves in one or more of the triangles of energy, showing, therefore, that:

a. Ray IV is relatively inactive.

b. Ray VII like Ray I is active through all three points, even though Aries is the most potent and active.

c. Ray VI as might be expected, is equally expressive and effective.

4. Five of the constellations—Taurus, Gemini, Libra, Scorpio and Aquarius—are only found in one of the various triangles.

a. Taurus (Ray IV) is not active exoterically as the fourth ray is not in manifestation at this time.

b. Through Scorpio, Ray IV is focussing esoterically the work of the world disciples, preparing them for initiation.

c. Gemini is only found in the triangle of Ray II and at this time, Virgo and Pisces are carrying the major task of transmitting second ray energy. Today the world is focussed (spiritually or materially) and the fluctuations of the pairs of opposites are much lessened temporarily. Gemini, therefore, is the inactive point of the triangle, though still potent from the esoteric angle of the individual disciple or initiate.

d. Libra is also found relatively inactive in the triangle of Ray III. Today there is no true balance but the opposition of spirit and matter is so violent that the Libran force is relatively quiescent. Ray III is expressing itself through Cancer, as far as the mass is concerned and through Capricorn, on a much smaller scale, in relation to the world disciples. Capricorn esoterically leads towards the externalisation of the Mysteries.

e. Aquarius is not today the active point for the transmission of the energy of Ray V. However, shortly, as the Sun passes more fully into the sign Aquarius, the triangle will again revolve and bring the Aquarian point into a controlling position.

5. It is interesting to have in mind that Ray V governs the evolution of consciousness through the revolution of its triangle: Leo, Sagittarius and Aquarius. This is from the angle of hierarchical effort, as I earlier pointed out. Throughout human evolution, this major triangle governs the relation of humanity, through the mind, to the Hierarchy and the approach of that Hierarchy to the human centre of energy. Let me recall to your attention the following facts in this connection:

Sagittarius	The Approach of the Hierarchy	Lemurian in date. Proceeding steadily always.
	The PAST	Impetus then given still persists.
	Mental unfoldment The work of the Master Mason	Instinct. Intellect. Intuition. To raise humanity to the mountain top of initiation.
Leo	The work of the Hierarchy	To raise the mass consciousness.
	The PRESENT	To capitalise on the original impetus of this sign.
	Psychic development The work of the Entered Apprentice	The growth of the response apparatus and the synthesis of the inner awareness. To learn and acquire knowledge.
Aquarius	The Achievement of the Hierarchy	The self-consciousness of Leo gives place to the group consciousness of Aquarius.
	The FUTURE	The merging of the human centre and the Hierarchy.
	Soul Expansion The work of the Fellow Craft	Recognition of relation. The building and service of the temple of humanity.

From the standpoint of our theme (the evolution of consciousness) it must never be forgotten that the aim is to bring the solar Angel, the Son of Mind (called in The Secret Doctrine, the Divine Manasaputra) into the seat of power. This task is pre-eminently entrusted to the three great Lives Who function through Gemini-Libra-Aquarius.

... A point arises here which is one of real moment or perhaps, I should say that a question might here be asked: How does it happen that one tiny non-sacred planet should be considered of such importance that these great Lives should be concerned with the unfoldment of mind in humanity? The answer is that they are not. It is humanity which—under the urge of great inflowing and outflowing energies—is concerned with the problem of mental development. In the last analysis, the problem of response to and interpretation of the environing contacts is one which is to be found on every planet and particularly upon the non-sacred planets. This response must be evoked, not only in the fourth kingdom in nature but in all the kingdoms. Our solar system is one in which sensitivity to contact is the dominant quality; it is in process of becoming cosmically aware; it is driven by need and environing cosmic circumstance to develop love-wisdom and both these words are descriptive and expressive of the consciousness aspect. Love is response to contact and this—in the human being—means understanding, inclusiveness and identification. Wisdom connotes skill in action as the result of developed love and the light of understanding; it is awareness of requirements and ability to bring together into a fused relationship the need and that which will meet it. Service is essentially a scientific mode of expressing love-wisdom under the influence of one or other of the seven



rays, according to the soul ray of the serving disciple. The whole problem is one concerning our planetary Logos. It might be said (in order to make our theme comprehensible to you) that the evolutionary process—from the standpoint of the ordinary human being—is to make the non-sacred planet, our Earth, responsive to cosmic impacts thus bringing more inter-related and inner integration into the logoic body of expression. There are other purposes but it is only after the third initiation that a man begins to comprehend them...

...There are, therefore, great Triangles of energy which affect the mental response apparatus of humanity and to the above triangle which concerns the unfoldment of the mind, two others can be added:

I.		1. Taurus	Desire	the incentive to evolutionary unfoldment in the human kingdom.
		2. Scorpio	Aspiration	the key to the testing of the disciple.
		3. Capricorn	Illumination	the liberation of the initiate.
II.		<b>1. Sagittarius Direction</b>		<b>expression of the intuition.</b>
		2. Cancer	Incarnation	experience of realisation.
		3. Leo	Self-consciousness	mode of development.

...We have reached a point in our consideration of the Science of Triangles wherein we can pause for a minute to consider our next approach to this subject and choose the theme by means of which we can throw more light upon it. It should by now be obvious to you that this Science of Triangles concerns the beneficence of Deity and that, through the intricate combinations of cosmic, systemic and planetary triangles, the purposes of God are working out. Those purposes are motivated by love. It is through these relationships that love expresses itself, brings about the needed changes for that expression, and human consciousness is brought into the required state of inclusiveness.

...It is through the squares or the quaternial relation that the form aspect is brought into relation and adequacy to the will of Deity, expressing itself through the gradually unfolding consciousness aspect. I am explaining this situation in these simple words because it must be apparent to you that only as the soul illumines the mind can the significance of the teaching be grasped. It is only when the stage of initiation is reached that the true meaning will emerge. In the meantime, I have sought to awaken in your minds a reaction to the abstract truth lying behind the two following statements:

1. The Science of Triangles is related to the total expression of the divine triplicity of manifestation: will, love and intelligence or life, consciousness and form. Until, therefore, the disciple can express in himself the integrated resemblance to these three aspects, he will not be able to grasp the meaning of this subjective astrological science.

2. On our planet, the Science of Triangles is related to the three major aspects, as they express themselves through Shamballa, the Hierarchy and Humanity. Again, therefore, we come up against the need for the approach of the integrated human being to this science because only the man who is responsive to these three focal points of energy can understand the interplay. Only, in fact, can the man apprehend the underlying truth whose two head centres and his heart centre form a triangle of flowing energies...

...I would remind you of what I said earlier in the treatise that the Science of Triangles is related to spirit and synthesis. I would remind you also that what I have written in this astrological section of the Treatise on the Seven Rays is intended for the instruction of disciples at the close of this century (SAM – this means now)...

### **Conclusion (at this point):**

May we consider together entering into that higher state of (group/soul) 'bewilderment', especially at this cycle of Aquarian consciousness, yet strength and unity from our lower state of personal certitude and isolation to possibly obtain a universal group consciousness.