

Full Moon of Scorpio, eighth Full Moon of this Astrological Year, on Saturday, October 28, 2023 at 23:23:50 in Romania:

The main Keynote or phrase to consider for all Scorpio Full Moons (each year): **“Warrior I am and from the battle I emerge triumphant.”** The Scorpio Full Moon Keynote of Light each year is: **“The Light of Day. (Hint 1: This is the place where three lights meet the light of form, the light of soul, and the light of life. Hint 2: They meet; they blend; they rise.)”** Consider the Keynotes at, or as close to, the time of the Full Moon as possible and what it might mean as a Group. Each of the constellations also have at least one, but also as many as five, Ray determining energies by which they rule and of which they rule. **The main Ray energy of Scorpio is Ray 4.** So, Scorpio has a main energy of Harmony through Conflict. This energy can also be expressed by the word Beauty and can also be described as Mathematical Precision. It is a recommendation to consider the Scorpio Keynotes as Ray 4 Keynotes. This is a direct correspondence to the information of our Color Consultations and the way this same Ray determining affects us individually and in our relationship to our group. So, our Color Consultation information can be reviewed and related to each of the Full Moon determining energies to determine the possible effects and opportunities each Full Moon offers each of us personally and in relationship with the group. This was explained and expanded upon from Esoteric Astrology (EA) in general in Addendum 1 from the past Aries Full Moon report (from April 2021). This year we are adding information on how each constellation works as a Triangle in what are called the Astrological or Galactic Triangles. Addendum 1 from the last Aries Full Moon report (from April 2023) is a general introduction about the triangles formed with the 12 Astrological signs and other more distant stars and galactic constellations, taken from EA. Addendum 1, below, relates specifically to Scorpio and how it fits into the galactic triangles. Scorpio is the eighth sign of the Astrological year and the fifth of the nine distributing or ‘grounding’ energy and consciousness Full Moons of the year. It continues and helps to distribute or ‘ground’ the higher building cycle consciousness from the first three months of the astrological year of Aries, Taurus, and Gemini (April, May, and June). Addendum 3 from the last Aries Full Moon report (from April 2023) is some additional information on the full moons and possible meditation forms.

A. Notes on this coming Full Moon of October/Scorpio:

- 1. Watch for any impressions** that may come to you before the Full Moon that may relate to the Ray 4 Keynotes and your specific Rays (from your Color Consultations), especially two days before the Full Moon, the day of the Full Moon and two days after the Full Moon. **If you want to share** any of your impressions with us please do. If you want any impressions shared with the group let us know and we will include them in the next month's meditation notes.
- 2. This is the eighth of twelve Full Moons of this Astrological year** and is the fifth of the nine different ‘Distributing Consciousness and Energy’ full moons of this astrological year. The energy which was built and gathered during the first three ‘Building’ Full Moons at the beginning of the astrological year (of April, May June), which is also called the ‘higher interlude’, will now be distributed over the next last nine Full Moons during the end of the astrological year, which is also called the ‘lower interlude’.
- 3. Addendum 1 from the Full Moon report of Aries (from April 2021) gives reference into more insight and inspiration for how to** view some of the expanded awareness of these monthly and yearly Full Moon cycles as we enter into the fifth Astrological Year of this group formation and the group's beginning functioning.
- 4. Addendum 1 below** relates specifically to Scorpio and how it fits into the galactic triangles taken from EA.
- 5. The 2023-4 astrological year Annual Keynote is,** “LET THE GROUP AFFIRM THE WILL AS AN EXPRESSION OF THE LAW OF SACRIFICE.”
- 6. There will be a partial eclipse during this Full Moon of Scorpio** which can enhance the energies experienced during the Full Moon in several ways that affect us and our connection to the group, such as, enhancing our Soul connections.

B. Notes and Activities on or since the last Full Moon September/Libra:

- 1. SuonAngelMiriam meditated at the time of the new and full moon, together with Safi (when she wanted). We had what we consider** very good meditations of positive grounding of this astrological year's continuing of the Lower Interlude.

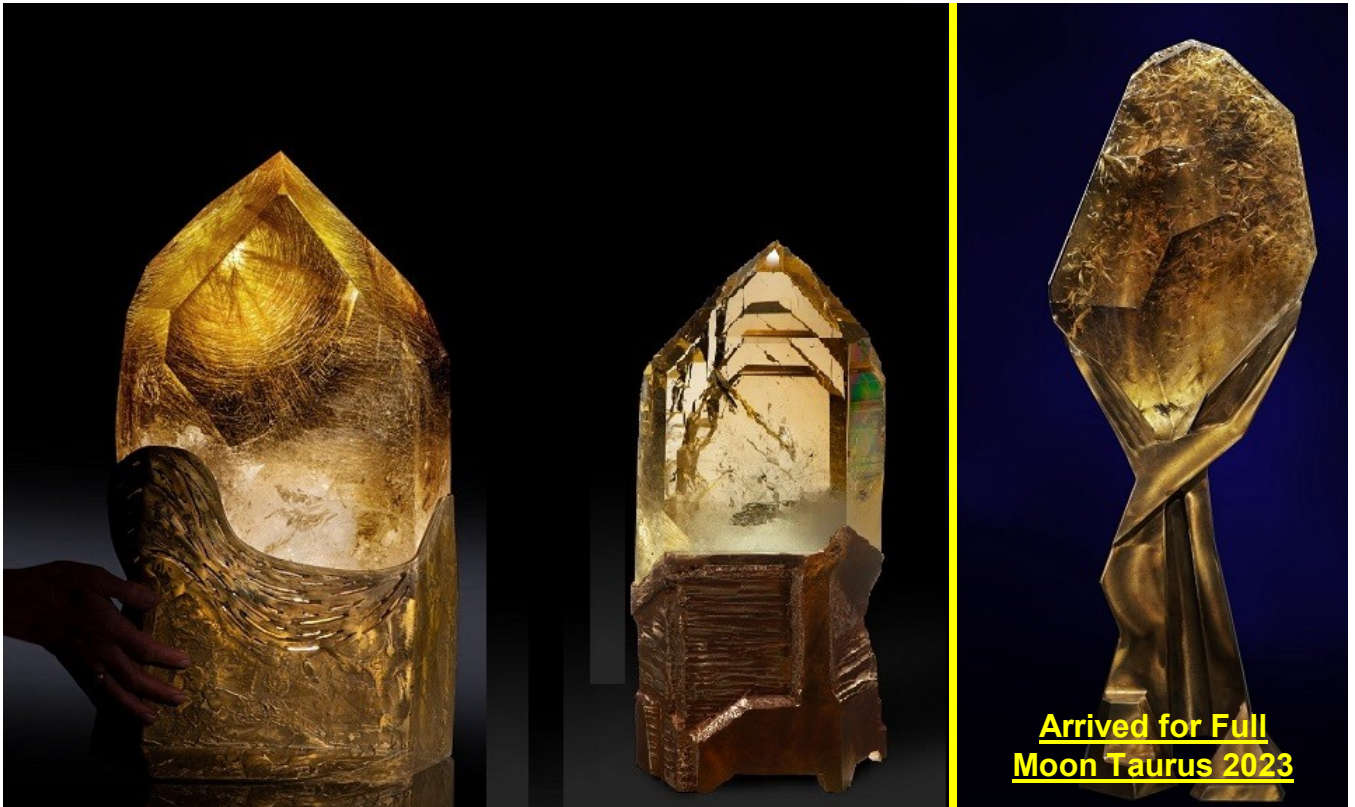
Since the first and highest of the Golden Light Presence crystals, 'MilkyWay' has arrived we are also tuning in to our respective Nirvana IV_{1&2} occult group of crystals during our meditations and sensing an increase of energy due to these crystals.

2. **SuonAngel are talking with 2023 Timisoara Cultural Capital office about a cooperative event possibly named 'SAMatate'** between Favisan, BFL/SolarCity (The Natural Way Assoc. - TNWA), the Hemp Museum, SAM2013 and possibly Anatacor and Aurellian's or other groups for the Cultural Capital celebrations rescheduled to 2023. See the previous meditation report for April for past historical information about this event.
3. **The Group Central Pillar Crystals** and the Esoteric and Occult crystal sets are now finalized along with any rearranging of the other crystals of the set for the 2025 impulse. Please let us know if you would like to explore any of these crystals or have any other input (see photo in previous FM report of Gemini of June 2022). **The three natural triple pointed crystal clusters** are always available for any group members who would like to meditate with them as another way to tune into group consciousness (see previous photo from March 2022 Pisces report). **Of three new 'Circumcentral' crystals two are still on a Lay-Away plan** to be here by the Summer Solstice of 2025 for the Hierarchical Group Impulse year of 2025 and the first has arrived before the recent past Full Moon of Taurus (see photo below or <http://www.sam2013.org/crystals.html> on our website for more information).
4. **Poppy research at BioFarmland** (BFL) at Virginia's suggestion. Seeds from this year's wild Poppy harvest were collected and planted in last June for growing during the 2024 season.
5. **Revised and renewed Hemp Museum suggestion** presented to Zoli, Virginia, and Leontina as a possible group project. There was similar input about local, village or household museums from the "Socio-Economico-Cultural Rebirth of the Romanian Village" conference in Item 2 above.
6. **Based on Leontina's previous intentions to establish an educational location near her home further discussions are going on about** a location, financing, possible links to other hemp projects and people. An initial estimate to get a small workshop space built on her land, for materials with mainly voluntary labor or construction, is 3,000 Euros.

Leontina has created the Sopronul Cultural (The Cultural Shack) which is a roof on the spot where people camped last time and where she is holding events together with Pamantul Stramosesc. She has organized there markets, courses for children, seeds exchanges, concerts, etc. The idea of the cultural space for the moment has moved there and she is focused on Pamantul Stramosesc where she is a founder member together with Calin Georgescu. There was an event now with the occasion of 1st of May, held at the Sopronul Cultural together with Pamantul Stramosesc which consisted of a Plama and Plasmatic water making and another of hemp soap making.

Following the event all present together with Leontina discussed about the possibility of building a geodesic dome structure, 9 meters in diameter and 4.5 meters high, as a protected space for the Sopronul Cultural workshops, courses etc. For the moment the period agreed upon for the beginning of the structure is the end of July, exact dates following to be settled together with Pamantul Stramosesc. Anyone who is interested in helping the building of this structure please contact us or Leontina directly. Due to challenges encountered with the political system at her home location, Leontina has decided to stop for the moment Sopronul Cultural and the building of the dome until the environment becomes more friendly to her projects.

7. **SuonAngelMiriam have met personally with Georghe Piperea** and joined his class action law suit against the constitutionality of mandates which is moving forward as discussed in the Full Moon cover letter for Capricorn (2021). September 2022 hearing produced a change in how and who the law suit will be claiming as the defendants and is continuing. Recent meetings at Singfest in September and December 2022. Let us know if you have additional comments or questions. Next meetings scheduled for June 30 to July 2, 2023 at Singfest 2023 were not able to be attended but the law suit is continuing now at the appeal stage of litigation.



8. **SuonAngelMiriam are continuing our interaction with Katharina documenting** how to manage and implement new and better ways of herb growing, drying, processing, soil regeneration, etc.
9. **SuonAngelMiriam are interacting with Virginia on her Bio-Resonance and Herbal and Aromatherapy courses, consultations** and treatments along with the consideration of the SAM2013 Synthesise Tri-Level Color Set as liquids. Updated at meetings in September and October 2022, continuing with Virginia's Certified Herbal and Aroma Therapy courses #1 and now #2 which was in March 2023 and had another meeting at EsotericFest in June 2023 (also see Item #2 above). The next meetings are planned for this Summer and Autumn.
10. **SuonAngelMiriam are working with Remus and others on updating and expanding** one of his personal spirituality courses on Self Esteem as an Esoteric Group project. Anyone interested in knowing more or helping in this group project please let us know. Latest update was at EsotericFest in June 23 with another meeting being planned for this autumn.
11. **We participated in Remus' course about Stress Management** held through anatecor which is related to Virginia's fitotherapy course. We also attended the prayer zoom meeting he and Anatecor organized for the professor Mircea Stefea who passed recently.
12. **SuonAngelMiriam are working with Aurellian on how some of the concepts of his book and course** on "The Numerology of the Soul" might relate and correspond to the SAM2013 Synthesis Tri-Level Color System numerology. Both Aurellian and Suon have had direct contact with Yogi Bahjan who taught the numerology of the soul concepts.
13. **SuonAngelMiriam are working with Mircea on ways of distributing SAMfume** and other products and working more closely together on the other projects listed above. Recent meetings held in September Singfest and at the Singureni Christmas Fair 2022 and then in June 2023 also.

C. Previous Activities Archive:

1. **Hemp** for cooperative research at BioFarmland (BFL) on hold after 3 years of testing.

D. General Notes and considerations about the group, cycles, meditation and information flow:

1. **We are happy to get to know each other better**, or other ways that we may cooperate either personally, or as organizations. Please let us know if you would like any other meetings or if you have any other comments or questions.
2. **2023 continues the new seven year cycle started in 2020**. The final major group 'impact' has been made in 2019 prior to the next 100 year 'impulse' which happens during 2025.
3. **It might be considered that these Group Meditations seek** to make use of the spiritual opportunities that the cycles of full moons, solstices and equinoxes, Group Festival Weeks and Centennial Impulse years provide. The unique energies associated with each constellation, season and longer cycles are directed into the consciousness as trans-formative qualities that can lift and expand our hearts and minds.

4. **It might be considered that Group Living tends to the fulfillment of free will in service** and, as this is gradually understood, coming together to co-operate on issues for the benefit of the whole without intentions to dominate, interfere or impose on others. The vision is there, the future is assured, but the key to its successful implementation is that co-operation has to be based on intentions that are based on the good of the whole rather than a focus on self-interest.
5. **In all meditation it is of value for the student to remember that,** from the standpoint of permanent benefit, it is easier to meditate effectively during the period from the new moon to the full moon, than from the full moon to the new moon. The first half of the lunar cycle is one of intensification, absorption and accretion; the second half is one of assimilation and distribution. More real progress over a long period can be made by observing this cyclic law.
6. **Wisely utilizing newly acquired energies keeps inflowing and out flowing channels open** and prevents Sycal (psychical), Astral (emotional), Mental (intellectual) congestions, which may otherwise be experienced, with their accompanying physical consequences.
7. **The following regular monthly cycle is for the group information flow:**
 - a. Full Moon (five days): Two days before, the day of (meditation), and two days after Full Moon for getting impressions.
 - b. The week after the 5 days of the Full Moon: For letting us know or sharing of any impressions during the preceding 5 days. Plus us transcribing our own impressions.
 - c. Second week after Full Moon for 'Anchoring' or 'Grounding' impressions through gathering other information or following up on activities based on the impressions. Possible New Moon meditation by those who want and ending that Full Moon Cycle.
 - d. Third week after Full Moon (just after the New Moon): Starting to build up to the next Full Moon having any questions to impressions shared and answered and any activities based on impressions started or completed.
 - e. Fourth week after the Full Moon (just before the next Full Moon): Coming out with the Keynote and information and timing of the next Full Moon, including the shared impressions or activity from the last Full Moon.

Addendum 1: Scorpio, The Scorpion, constellation hypothesizes and considerations on the Galactic Triangles from EA:

SCORPIO, THE SCORPIAN:

This study will fall into three parts as earlier indicated:

1. Triangles of Energy—constellations.
2. Triangles of Force—planetary triplicities.
3. The Triangles and the Centres—planetary and human.

First Triangle:

The Pleiades . . . Cancer . . . Venus.
Humanity.

Second Triangle:

The Great Bear . . . Aries . . . Pluto.
Shamballa.

Third Triangle:

Sirius . . . Leo . . . Jupiter.
Hierarchy.

TABULATION IX - A COSMIC SERIES OF INTERRELATED TRIANGLES

(The Rays, Constellations and Planets)

Ray (only Ray IV shown because it has Scorpio in the triangles)

	<u>Constellations</u>	<u>Planets</u>	
		<u>Orthodox</u>	<u>Esoteric</u>
IV. Harmony-Conflict	Taurus Scorpio Sagittarius	Venus Mars Jupiter	Vulcan Mars The Earth

All these appearances, expressions of qualities and material evidences of life are the symbols or outer and visible signs of inner and spiritual realities or of Life, whatever you may mean by that term...

...Again and repeatedly, students must remind themselves that we are considering the impact of energy upon energy units (all qualified and producing appearance) and with the response of those energy units to the streams of force which reach them from "the furthest centre." It is in the development of response to

distant points of contact and emanating sources of energy that the needed sensitivity is produced. Sensitivity, generally speaking, is of a threefold nature:

1. Sensitivity to that which is found within oneself. This, when the consciousness is adequately self-sufficient, opens a door for the entrance of energies coming from the "middle centre." I speak in symbols and for those whose knowledge of cosmic location and of points in time and space will enable them to comprehend; to the uninitiate, I simply say, "Respond to soul impact."
2. Sensitivity to that which emanates from the "centres left behind" or to those streams of vital energy which lie active and focussed below the threshold of the waking consciousness. They stir the threads of memory; they draw backward the glances (and there lies magic in the energy of the eye) of the onward moving Point, the Pilgrim on his way; they condition through ancient habit the responsiveness of the units in the form.
3. A developed sensitivity which emerges from the "furthest centre" at first unconsciously employed and later consciously directed and attuned - a fully magnetic and attractive sensitivity. Forget not that true interplay imposes the condition of reciprocity and that the two points or termini of a line eventually vibrate in unison.

...The twelve signs of the zodiac fall into two groups of signs, and their related synthesis has much to do with the Science of Triangles. They are:

1. Seven signs related to the unfoldment of planetary consciousness upon Earth and only incidentally involving the fourth Creative Hierarchy, the Human Hierarchy.
2. Five signs related to the unfoldment, in time and space, of the Human Hierarchy. These five signs are of major conditioning importance and may be enumerated as follows:
 - a. Cancer
 - b. Leo
 - c. Scorpio**
 - d. Capricorn
 - e. Pisces

These five signs are related in the planetary sense to the five great races of which our present race, the Aryan, is the fifth. These five races, under the influence of the five signs, produce the externalisations which are called the five continents—Europe, Africa, Asia, Australia, America. These five continents are to the planetary Life what five major endocrine glands are to the human being. They are related to five centres...

...
It may interest you also to know the governing rays and astrological signs of these five places, so far as they can be given at this time and during this present cycle. Forget not that the personality rays change from period to period in connection with countries and cities just as they do with individuals:

RAYS:

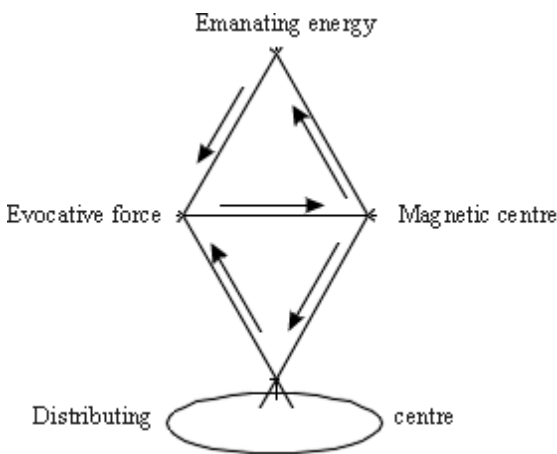
<u>City</u>	<u>Soul</u>	<u>Personality</u>	<u>Sign</u>
1. London	5th	7th	Gemini.
2. New York	2nd	3rd	Cancer.
3. Tokyo	6th	4th	Cancer.
4. Geneva	1st	2nd	Leo.
5. Darjeeling	2nd	5th	Scorpio...

... In the study of this Science of Triangles, the student must bear in mind that there is always one point of the triangle which—in a particular crisis or "event in consciousness"—is the emanating, dynamic, conditioning energy. During the cycle (great or small, major or minor) in which it thus controls, the other two points express receptivity and are regarded esoterically as embodying forces. Every triangle is, therefore, the expression of one fundamental energy and of two secondary forces. This is a basic statement of importance and the formulation of a law under which all the triplicities of energy function in time and space. You have consequently:

1. An emanating energy centre.
 Dynamic expression of cyclic purpose.
 Positive qualified out-going ray energy.
 Planetary, systemic, zodiacal and cosmic energy.
 The basis of hylozoistic (living) expression.

2. A receptive force centre.
 An evocative expression of the initial impelling energy.
 A synthesis of two forces, the emanating and the receptive.
 A qualified, conditioning secondary energy.
 Motivating, blended energy, neither positive nor negative.

3. A responsive point of negative energy.
 A major centre, completing the grounding of the emanating energy.
 Responsive mainly to the second point of the triangle.
 Source of a violent interplay between the two points of the base line.



This distributing centre can be a solar system, regarded as a cosmic centre, a planet, which is a systemic centre, one of the planetary centres, above referred to, a nation or an individual or one of the centres in the human etheric body.

A close study of these energy streams will demonstrate two major movements:

- I. A downflow of energy from an emanating centre. This leads to
 1. Its merging with the energy of a centre of reception and its consequent qualification.
 2. Its transmission to and its evocative effect upon a second point or focal point of reception.

Note: This leaves one side of the triangle as yet uncompleted.

3. The three types of energy (or rather one energy and two forces) proceed then with the following activities:

- a. Evocative energising of a secondary triangle.
- b. Pouring down one side of this reflected triangle into the evoked expression on the physical plane.
- c. Producing manifestation, quality and activity.
- d. Forming a reservoir of descending and balancing energies.

Some light on this most abstruse subject can be gained if the student will attempt to realise that the above diagram and subsequent statement describes his own involutory and evolutionary history. It depicts the

interplay of his monadic life, soul energy and personality force, as these three focus on the physical plane, producing manifestation and appearance.

II. A return flow of this qualified energy to its emanating source or the highest point of the major triangle. This produces:

1. The completion of the two triangles—the Real and the unreal. The building of the antahkarana is an aspect of this completion. This concerns the final building of the later stages of the antahkarana by the initiate.

2. The transmission of force from the reflected or secondary triangle in the three worlds of human endeavour (or in the five worlds in the case of the evolution of members of the Hierarchy) is into the same focal point on the base line of the higher triangle which received the original emanating energy.

3. There are consequently two points of major importance in the higher triangle:

a. The emanating point of positive conditioning energy.

b. The point which receives into itself both the higher energy and the lower forces. This point is called the soul aspect of the triangle and is always the registering agent of consciousness. It is, therefore, the producer of crises, because the point where several energies meet is the source of crisis in the outer life.

c. These crises are crises of initiation and this is true of men as individuals, of nations and of humanity as a whole.

d. The overshadowing triangle is the factor which produces by its flow into and out of the secondary triangle the "moments in time and the events in space which lead to those episodes in the life of the soul wherein force becomes energy and energy becomes life."

Such a momentous event or crisis is now taking place in the life of humanity today.

More along this line I may not here dictate. The subject is too vast, abstruse and complicated. I have, however, indicated enough to throw some light upon this intricate science. Summarising what I have said:

1. Emanating, evocative and magnetic energies are the three types of energy, flowing from the "superior triangle."

2. Receptive, distributing and critical force are the three types of energy distributed by the "inferior or reflected triangle."

3. Two points of energy are shared by both triangles along the base line. When the work is completed, the base line is formed by two blended streams of energy, which embody the energies of both triangles.

4. One point of energy (the magnetic point) produces involution and outgoing during the process of forming the lower triangle. In a later stage it—as a blend of energies—induces return of all the energies to the emanating source.

At the same time, students must bear in mind that—owing to the Great Illusion—it may appear to them that the triangles are incomplete during the evolutionary process. The fact, however, is that in the Eternal Now all three sides of the triangles eternally exist and persist. The problem is found only in the consciousness of the subject but not in the Reality.

5. It must be noted by the student that:

a. The masses of men express down-pouring energy from the magnetic centre. Their rightful trend is at present downward into physical manifestation and experience.

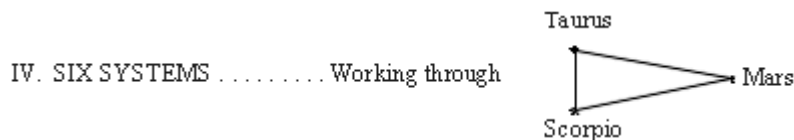
b. Aspirants and probationers express responsiveness to the pull of the evocative centre. Their urge is towards the path of return.

c. Accepted disciples and initiates express the interplay along the base line between the evocative and magnetic points.

d. Higher initiates and Masters utilise and express the energy blended in the magnetic centre. They are returning or responding to the emanating centre.

Thus the sixfold triangle—objective and subjective—is completed...(SAM – This is basically a sustinct summary explanation, in astrological terms, of how we have been conveying to our three esoteric groups of three people, for the past five years, how our triangular groups energy flows, how our triangular groups consciousness evolves and how our triangular groups synthesis is achieved).

... Another group of energies can be touched upon though any true elucidation is not possible. They concern the focussed energies of the seven solar systems of which ours is one. These energies (six in number) reach our solar system, via the constellations Taurus and Scorpio and the planet Mars.



Their peculiar nature, objective in evolution and basic purpose is only revealed to initiates above the fifth initiation. They are concerned with the problem of desire (which is to humanity a problem but not in its higher octaves) and with its transmutation into spiritual will and divine purpose. They are the originators of conflict, are closely connected with the fourth Ray of Harmony through Conflict and are, therefore, in a peculiar relation to the fourth Creative Hierarchy, the human, and to our Earth in this fourth round...

... There are, as I pointed out earlier, seven great crises in connection with the human being upon the path of evolution; they cover the earlier, the later and the final stages of his growth. These it should be borne in mind are precipitated through the conditioning influences of seven great constellations. Let us consider them for a moment. They are:

THE CRISES OF THE SOUL:

<u>Crisis</u>	<u>Quality</u>	<u>Constellation</u>	<u>Cross</u>
1. Crisis of Incarnation	Individualisation	Cancer	Cardinal
2. Crisis of Orientation	Reversal	Aries	Cardinal
3. Crisis of Initiation	Expansion	Capricorn	Cardinal
4. Crisis of Renunciation	Crucifixion	Gemini	Mutable
5. Crisis of the Battlefield	Conflict	Scorpio	Fixed
6. Crisis of the Birthplace	Initiation	Virgo	Mutable
7. Crisis of Burning ground	Liberation	Leo	Fixed

... I would like here to call your attention to an interesting point which has a definite bearing upon the power of the individual to grasp the new astrology and to comprehend the Science of Triangles. The astrological symbols for Virgo and Scorpio are triple in nature—the only two which are. When the disciple grasps the meaning behind this triplicity, he will be ready to grasp the significance of this abstruse science and to work with the new astrology. Virgo and Scorpio are two signs connected with the growth of the Christ consciousness; they mark critical points in the soul's experience—points of integration wherein the soul is consciously at-one-ing itself with the form and at the same time with spirit. I said the soul's experience, not the experience of the man upon the physical plane. When the experience undergone in Virgo is consummated in Pisces and the tests of Scorpio have led to illumination in Taurus, then the effect of these four energies (Virgo, Pisces, Scorpio, Taurus) will be to make man the true triangle, expressing the three divine aspects or energies as they come from the three major conditioning constellations: the Great Bear, the Pleiades and Sirius...

... We come now to another triangle, the activity of which produces the manifestation of Hierarchy—the intermediary between Shamballa and Humanity: Scorpio, Sirius and Mars. These, in relation to our Earth, produce the four streams of energy (initiating and transmitting) which lead humanity towards discipleship and initiation...

... It is interesting to bear in mind that just as each sign is divided into three decanates which are ruled by specific planets, so the zodiac itself is a part of a still greater zodiac and is also divided into three parts. The three-fold division of the zodiac is ruled by three constellations which are to this greater zodiac what the planets are to the decanates. The three ruling constellations are Scorpio (on the Fixed Cross), Taurus (also on the Fixed Cross), and Pisces (on the Mutable Cross). This would necessarily be so because testing, trial, desire, illumination, matter, form and salvation are the keynotes of our solar system and of our Earth in particular. This solar system is a system which is expressing the second aspect of divinity and hence the emphasis upon the forces pouring through Scorpio, Taurus and Pisces. Ponder on this. A hint is there conveyed anent our zodiac which is of supreme importance to the astrologer of the future. In the cosmic decanates to which I here refer, it will be found that three great sons of God have expressed for us the quality, the keynote and the development which is expressive of each decanate:

Hercules—Scorpio.—Strength through testing.

Buddha—Taurus.—Illumination through struggle.

Christ—Pisces.—Resurrection through sacrifice...

... Ray IV - Scorpio: Through this constellation comes the testing of humanity, the world disciple....

... b. Through Scorpio, Ray IV is focussing esoterically the work of the world disciples, preparing them for initiation...

... You will note that Pluto and not Mars is here mentioned by me as a non-sacred Planet, ruling Scorpio. The reason for this is that there is a relation between Mars and Pluto analogous to that between Venus and the Earth. Esoterically speaking, Mars is the alter ego of Pluto; the activity of Pluto at this time and in this lesser world cycle is very important on account of its esoteric approach to the Earth, impelled thereto by the vivification of its life by a display of Martian energy. The Earth, Mars and Pluto form an interesting triangle with Venus behind the scene acting as the impelling soul acts towards a rapidly integrating personality. This triangle should not be forgotten when casting the horoscope, because it indicates a relation and a possibility which can be (though it often is not) a major determining factor, prior to passing on to the Probationary Path...(Triangle formed by the ruling and influencing planets of Scorpio).

... It must be remembered that only through much repetition and frequent focussed effort are these results attained. A crisis is brought about by a certain habit of mind, developed in the vehicle; it is surmounted in time only by a certain habit and rhythm of the spiritual content of the man's nature. It is the establishing of a certain objective rhythm which produces a crisis; it is the emergence of a particular subjective rhythm which enables a man to surmount the crisis and to capitalise on the opportunity. Please bear this in mind...

...We have reached a point in our consideration of the Science of Triangles wherein we can pause for a minute to consider our next approach to this subject and choose the theme by means of which we can throw more light upon it. It should by now be obvious to you that this Science of Triangles concerns the beneficence of Deity and that, through the intricate combinations of cosmic, systemic and planetary triangles, the purposes of God are working out. Those purposes are motivated by love. It is through these relationships that love expresses itself, brings about the needed changes for that expression, and human consciousness is brought into the required state of inclusiveness.

...It is through the squares or the quaternial relation that the form aspect is brought into relation and adequacy to the will of Deity, expressing itself through the gradually unfolding consciousness aspect. I am explaining this situation in these simple words because it must be apparent to you that only as the soul illumines the mind can the significance of the teaching be grasped. It is only when the stage of initiation is reached that the true meaning will emerge. In the meantime, I have sought to awaken in your minds a reaction to the abstract truth lying behind the two following statements:

1. The Science of Triangles is related to the total expression of the divine triplicity of manifestation: will, love and intelligence or life, consciousness and form. Until, therefore, the disciple can express in himself the integrated resemblance to these three aspects, he will not be able to grasp the meaning of this subjective astrological science.

2. On our planet, the Science of Triangles is related to the three major aspects, as they express themselves through Shamballa, the Hierarchy and Humanity. Again, therefore, we come up against the need for the approach of the integrated human being to this science because only the man who is responsive to these

three focal points of energy can understand the interplay. Only, in fact, can the man apprehend the underlying truth whose two head centres and his heart centre form a triangle of flowing energies...

...I would remind you of what I said earlier in the treatise that the Science of Triangles is related to spirit and synthesis. I would remind you also that what I have written in this astrological section of the Treatise on the Seven Rays is intended for the instruction of disciples at the close of this century (SAM – this means now)...

Conclusion (at this point):

May we consider together entering into that higher state of (group/soul) 'bewilderment', especially at this cycle of Aquarian consciousness, yet strength and unity from our lower state of personal certitude and isolation to possibly obtain a universal group consciousness.